

Product datasheet for CR560335

Tissue Total RNA, Endometrium

Product data:

Product Type:	Total RNA
Disease State:	Cancer
Diagnosis Category:	Sarcoma
Tissue:	Endometrium
Frozen Sample ID:	FR00036277
Case ID:	CI0000017623
Prep:	1
Vial ID:	RN00003C6C
Tissue of Origin:	Endometrium
Site of Finding:	Endometrium
Appearance:	Tumor
Sample Diagnosis (from Pathology Verification):	Sarcoma, endometrial stromal
Normal:	0%
Lesional:	0%
Tumor:	95%
Tumor Hypo/Acellular Stroma:	0%
Tumor Hypercellular Stroma:	5%
Necrosis:	0%
Pathology Verification notes from H&E review:	Tumor Stroma (Hypo/Acellular): Fibrosis
Bioanalyzer Ratio (28S/18S):	1.47



[View online »](#)

CASE Diagnosis (from medical center path report): Sarcoma, stromal

Age: 58

Gender: Female

Race: White or Caucasian

Tumor Grade: FIGO G3: Poorly differentiated

Minimum Stage Grouping: IVB

T (Extent of Primary Tumor): T3a

N (Lymph node metastasis): NX

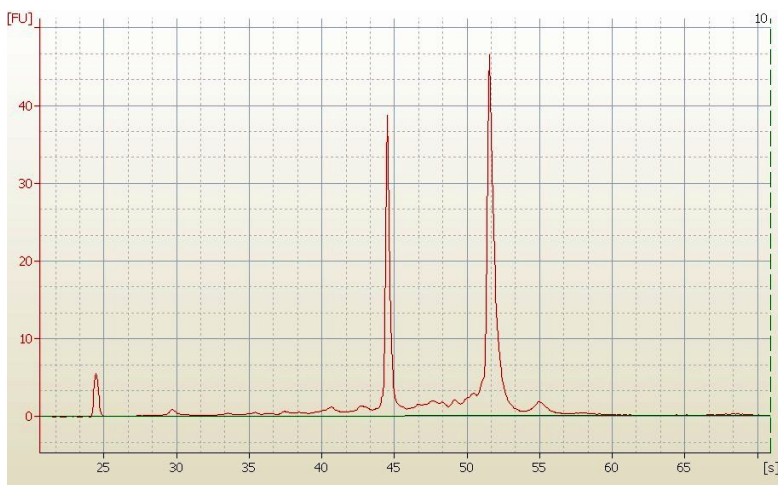
M (Distant metastasis): M1

Diagnostic Test Results: Cytokeratin (Pan) ~ Keratin, Pan ! by IHC,Negative; Smooth muscle actin ~ SMA ~ Alpha-SMA ! by IHC,Negative; Progesterone receptor ~ PR ! by IHC,Positive; Synaptophysin ~ SYN ! by IHC,Negative; Estrogen receptor ~ ER ! by IHC,Negative; CD45 ~

Storage: Store tissue total RNA at -80°C.

Stability: These products are stable for one year from date of shipping when stored at -80°C without repeated freeze/thaws.

Product images:



RNA Electropherogram Image



RNA RT-PCR Image