

## Product datasheet for CR560321

### Tissue Total RNA, Endometrium

#### Product data:

Product Type:	Total RNA
Disease State:	Cancer
Diagnosis Category:	Endometrial Cancer
Tissue:	Endometrium
Frozen Sample ID:	FR000015EC
Case ID:	CI0000000001
Prep:	1
Vial ID:	RN000000F1
Tissue of Origin:	Endometrium
Site of Finding:	Uterus
Appearance:	Tumor
Sample Diagnosis (from Pathology Verification):	Adenocarcinoma of endometrium, endometrioid, squamous features
Normal:	0%
Lesional:	0%
Tumor:	80%
Tumor Hypo/Acellular Stroma:	20%
Tumor Hypercellular Stroma:	0%
Necrosis:	0%
Pathology Verification notes from H&E review:	Hypercellular stroma contains numerous mixed inflammatory cells
Bioanalyzer Ratio (28S/18S):	1.29



[View online »](#)

**CASE Diagnosis (from medical center path report):** Adenocarcinoma of endometrium, squamous features

**Age:** 71

**Gender:** Female

**Race:** Black or African American

**Tumor Grade:** FIGO G1: Well differentiated

**Minimum Stage Grouping:** IB

**T (Extent of Primary Tumor):** T1b

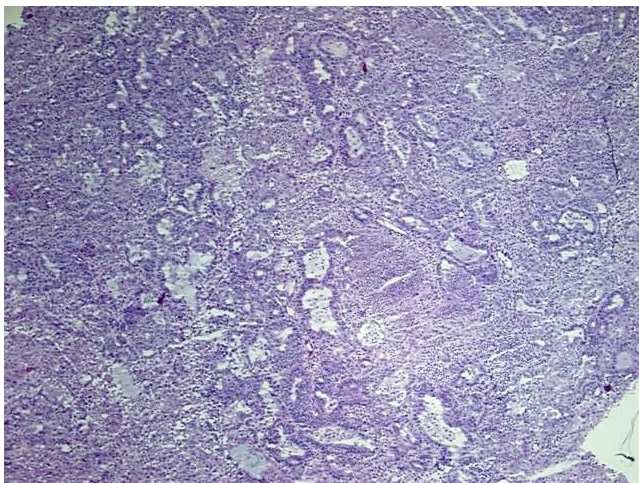
**N (Lymph node metastasis):** NX

**M (Distant metastasis):** MX

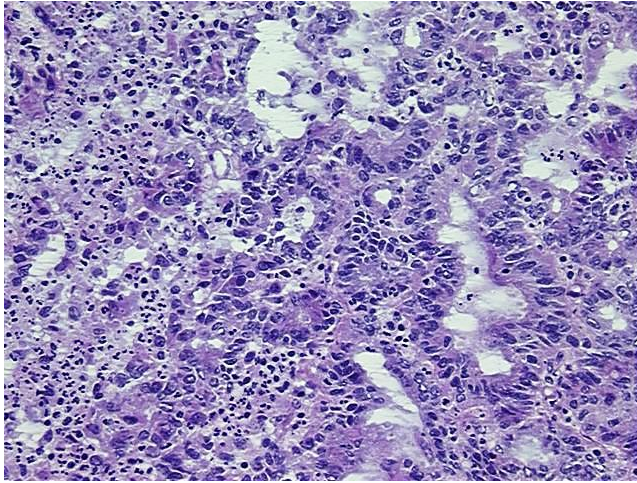
**Storage:** Store tissue total RNA at -80°C.

**Stability:** These products are stable for one year from date of shipping when stored at -80°C without repeated freeze/thaws.

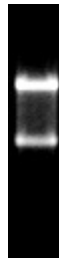
### Product images:



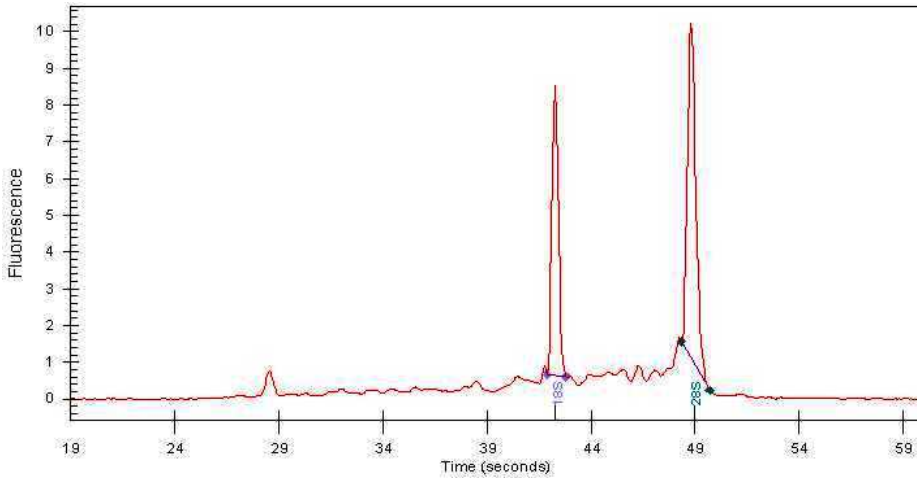
4x Image



20x Image



RNA Gel Image



RNA Electropherogram Image



RNA RT-PCR Image