

## Product datasheet for CR560311

### Tissue Total RNA, Kidney

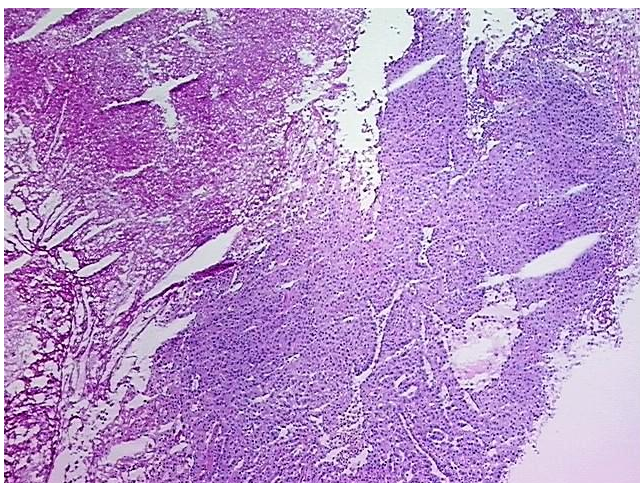
#### Product data:

Product Type:	Total RNA
Disease State:	Cancer
Diagnosis Category:	Renal Cell Carcinoma
Tissue:	Kidney
Frozen Sample ID:	FR0003598B
Case ID:	CI0000016503
Prep:	1
Vial ID:	RN00003743
Tissue of Origin:	Kidney
Site of Finding:	Kidney
Appearance:	Tumor
Sample Diagnosis (from Pathology Verification):	Carcinoma of kidney, renal cell, papillary
Normal:	0%
Lesional:	0%
Tumor:	50%
Tumor Hypo/Acellular Stroma:	5%
Tumor Hypercellular Stroma:	0%
Necrosis:	45%
Bioanalyzer Ratio (28S/18S):	2.23
CASE Diagnosis (from medical center path report):	Carcinoma of kidney, renal cell, papillary
Age:	73

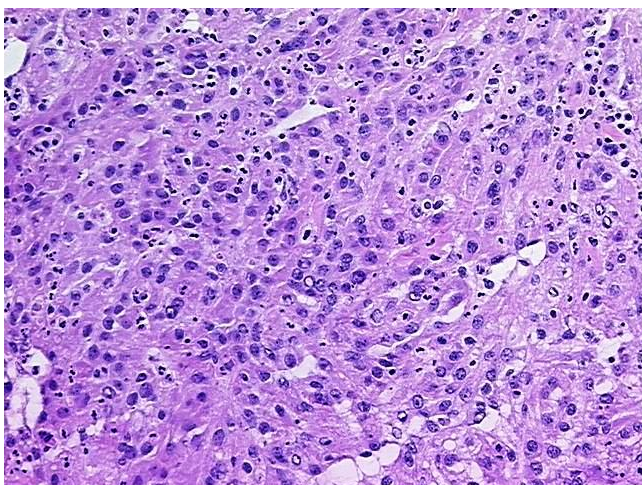


[View online »](#)

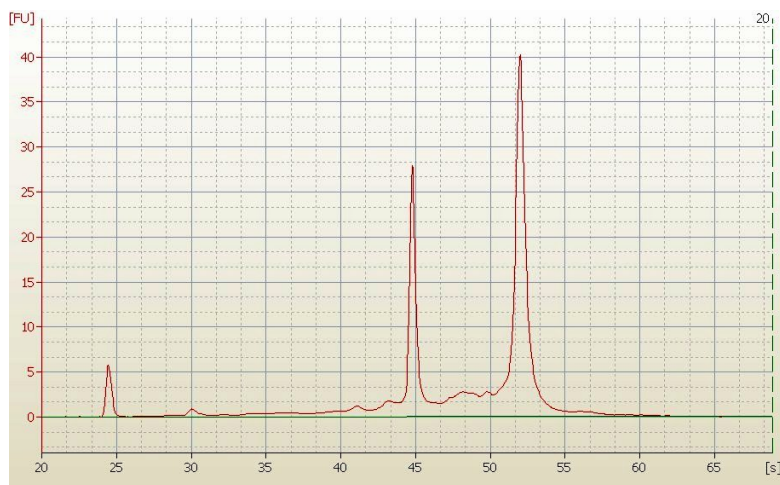
Gender:	Male
Race:	Black or African American
Tumor Grade:	Fuhrman G3: Nuclei very irregular
Minimum Stage Grouping:	III
T (Extent of Primary Tumor):	T3
N (Lymph node metastasis):	NX
M (Distant metastasis):	MX
Storage:	Store tissue total RNA at -80°C.
Stability:	These products are stable for one year from date of shipping when stored at -80°C without repeated freeze/thaws.

**Product images:**

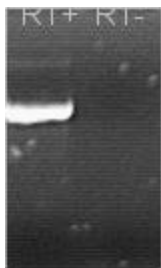
4x Image



20x Image



RNA Electropherogram Image



RNA RT-PCR Image