

## Product datasheet for CR560217

### Tissue Total RNA, Breast

#### Product data:

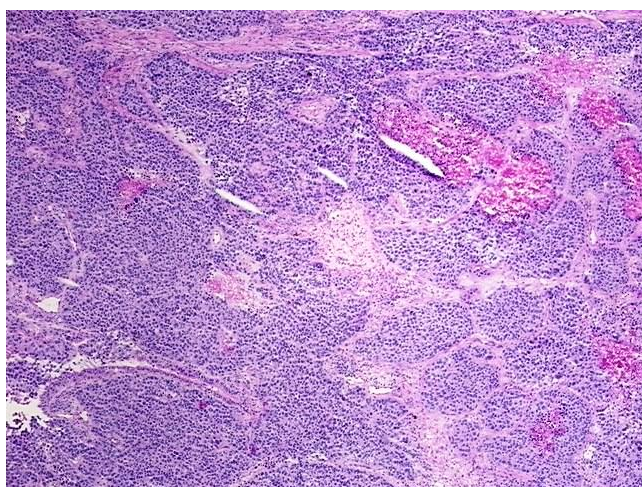
|   |   |
|---|---|
| Product Type:                                   | Total RNA   |
| Disease State:                                  | Cancer  |
| Diagnosis Category:                             | Breast Cancer   |
| Tissue:   | Breast  |
| Frozen Sample ID:                               | FR000351CE  |
| Case ID:  | CI0000014906  |
| Prep:   | 1   |
| Vial ID:  | RN00001CA3  |
| Tissue of Origin:                               | Breast  |
| Site of Finding:                                | Lung  |
| Appearance:                                     | Tumor   |
| Sample Diagnosis (from Pathology Verification): | Adenocarcinoma of breast, metastatic  |
| Normal:   | 5%  |
| Lesional:                                       | 0%  |
| Tumor:  | 75%   |
| Tumor Hypo/Acellular Stroma:                    | 10%   |
| Tumor Hypercellular Stroma:                     | 0%  |
| Necrosis:                                       | 10%   |
| Pathology Verification notes from H&E review:   | Tumor Stroma (Cellular): Desmoplastic reaction; Inflammation: Mild Lymphoplasmacytic infiltrate |
| Bioanalyzer Ratio (28S/18S):                    | 1.29  |



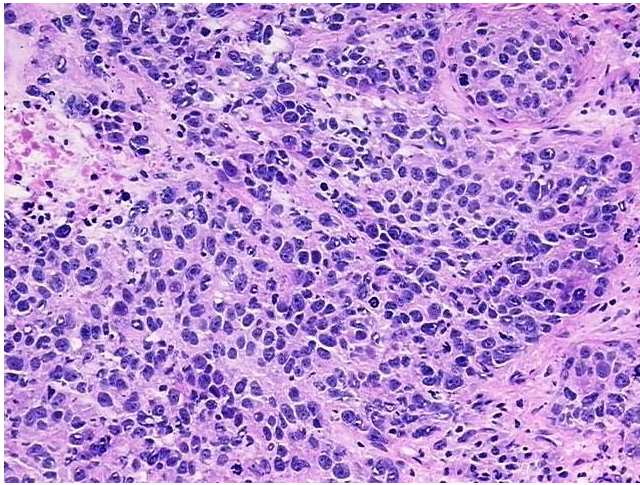
[View online »](#)

|  |   |
|--|---|
| <b>CASE Diagnosis (from medical center path report):</b> | Adenocarcinoma of breast, metastatic  |
| <b>Age:</b>  | 45  |
| <b>Gender:</b>   | Female  |
| <b>Race:</b>   | White or Caucasian  |
| <b>Tumor Grade:</b>                                      | See pathology report  |
| <b>Minimum Stage Grouping:</b>                           | IV  |
| <b>T (Extent of Primary Tumor):</b>                      | TX  |
| <b>N (Lymph node metastasis):</b>                        | NX  |
| <b>M (Distant metastasis):</b>                           | M1  |
| <b>Diagnostic Test Results:</b>                          | Progesterone receptor ~ PR ! by IHC,Positive; Synaptophysin ~ SYN ! by IHC,Negative; Estrogen receptor ~ ER ! by IHC,Negative; Cytokeratin 7 ~ CK7 ! by IHC,Positive; Chromogranin A ~ Parathyroid secretory protein 1 ! by IHC,Negative; Prolactin-i |
| <b>Storage:</b>  | Store tissue total RNA at -80°C.  |
| <b>Stability:</b>  | These products are stable for one year from date of shipping when stored at -80°C without repeated freeze/thaws.  |

### Product images:



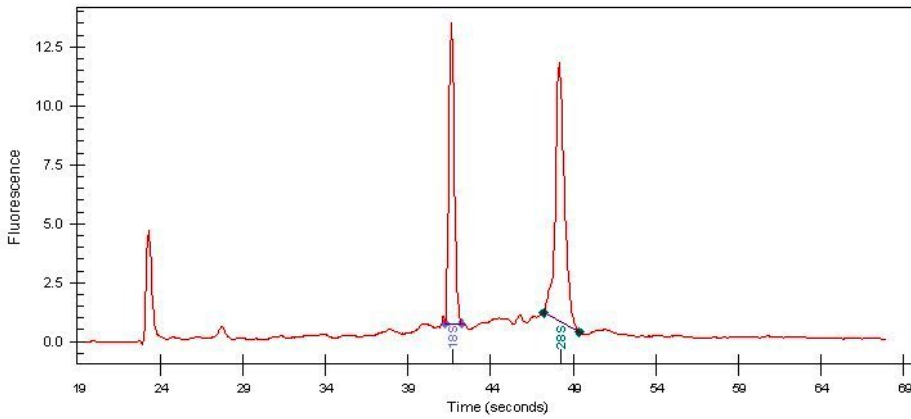
4x Image



20x Image



RNA Gel Image



RNA Electropherogram Image



RNA RT-PCR Image