

## Product datasheet for CR560216

### Tissue Total RNA, Kidney

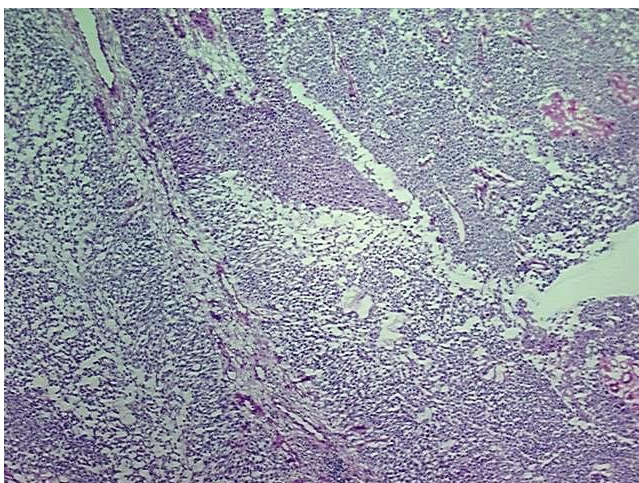
#### Product data:

Product Type:	Total RNA
Disease State:	Cancer
Diagnosis Category:	Renal Pelvis Cancer
Tissue:	Kidney
Frozen Sample ID:	FR00001CC5
Case ID:	CI0000000022
Prep:	2
Vial ID:	RN0000016E
Tissue of Origin:	Kidney
Site of Finding:	Kidney
Appearance:	Tumor
Sample Diagnosis (from Pathology Verification):	Carcinoma in situ of renal pelvis, papillary transitional cell
Normal:	0%
Lesional:	0%
Tumor:	80%
Tumor Hypo/Acellular Stroma:	15%
Tumor Hypercellular Stroma:	0%
Necrosis:	5%
Bioanalyzer Ratio (28S/18S):	1.35
CASE Diagnosis (from medical center path report):	Carcinoma in situ of renal pelvis, papillary transitional cell
Age:	71

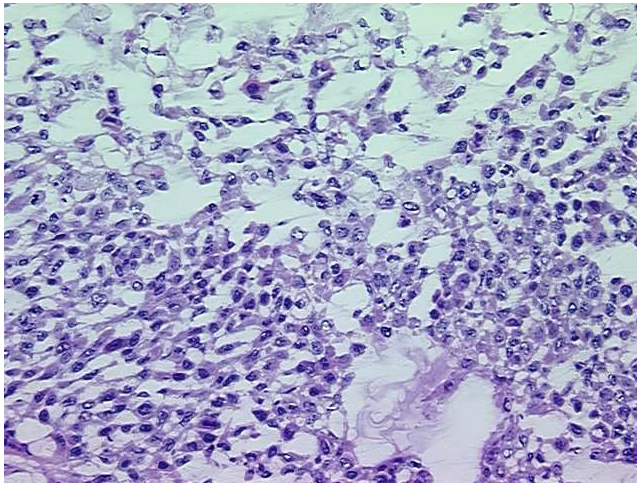


[View online »](#)

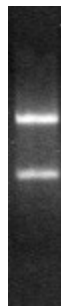
Gender:	Male
Race:	White or Caucasian
Tumor Grade:	Fuhrman G2: Nuclei slightly irregular
Minimum Stage Grouping:	0is
T (Extent of Primary Tumor):	Tis
N (Lymph node metastasis):	N0
M (Distant metastasis):	MX
Storage:	Store tissue total RNA at -80°C.
Stability:	These products are stable for one year from date of shipping when stored at -80°C without repeated freeze/thaws.

**Product images:**

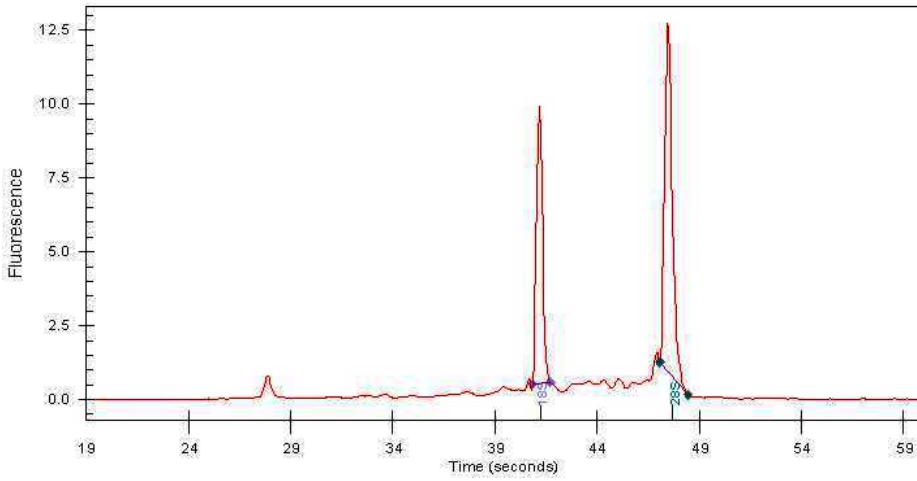
4x Image



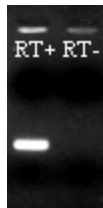
20x Image



RNA Gel Image



RNA Electropherogram Image



RNA RT-PCR Image