

## Product datasheet for CR560213

### Tissue Total RNA, Cervix

#### Product data:

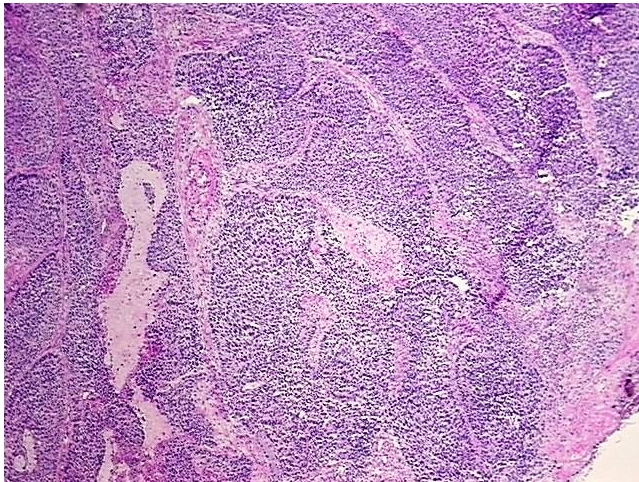
Product Type:	Total RNA
Disease State:	Cancer
Diagnosis Category:	Cervical Cancer
Tissue:	Cervix
Frozen Sample ID:	FR0003545B
Case ID:	CI0000014929
Prep:	1
Vial ID:	RN00002CAB
Tissue of Origin:	Cervix
Site of Finding:	Cervix
Appearance:	Tumor
Sample Diagnosis (from Pathology Verification):	Carcinoma of cervix, adenosquamous
Normal:	0%
Lesional:	0%
Tumor:	80%
Tumor Hypo/Acellular Stroma:	10%
Tumor Hypercellular Stroma:	0%
Necrosis:	10%
Bioanalyzer Ratio (28S/18S):	1.37
CASE Diagnosis (from medical center path report):	Carcinoma of cervix, adenosquamous
Age:	57



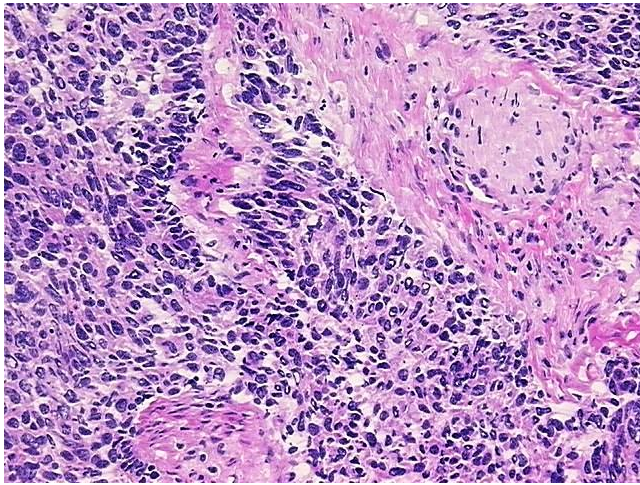
[View online »](#)

Gender:	Female
Race:	Black or African American
Tumor Grade:	FIGO G2: Moderately differentiated
Minimum Stage Grouping:	IB
T (Extent of Primary Tumor):	T1b
N (Lymph node metastasis):	N0
M (Distant metastasis):	MX
Diagnostic Test Results:	Vimentin ~ VIM ! by IHC,Negative; Progesterone receptor ~ PR ! by IHC,Negative; Estrogen receptor ~ ER ! by IHC,Negative; CD66e ~ CEACAM5 ! by IHC,Positive
Storage:	Store tissue total RNA at -80°C.
Stability:	These products are stable for one year from date of shipping when stored at -80°C without repeated freeze/thaws.

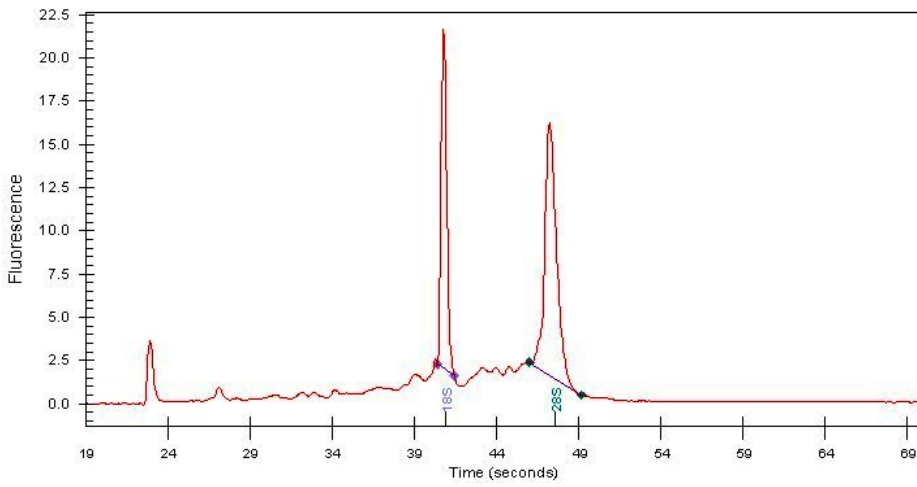
### Product images:



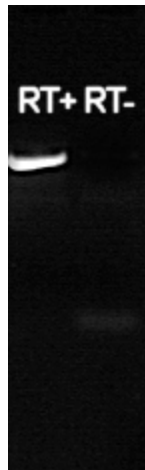
4x Image



20x Image



RNA Electropherogram Image



RNA RT-PCR Image