

## Product datasheet for CR560210

### Tissue Total RNA, Endometrium

#### Product data:

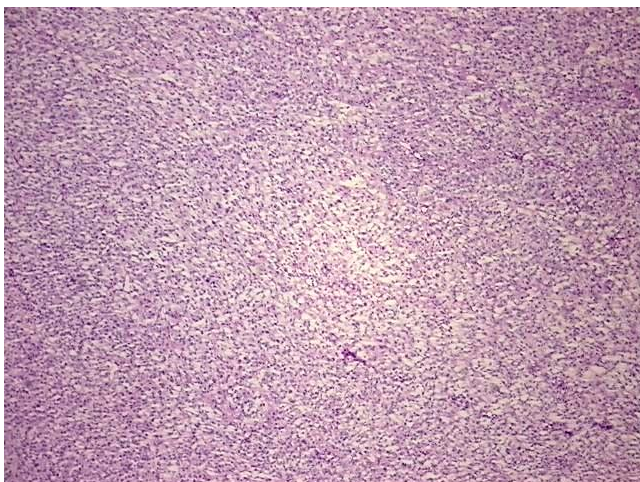
Product Type:	Total RNA
Disease State:	Cancer
Diagnosis Category:	Sarcoma
Tissue:	Endometrium
Frozen Sample ID:	FR000355F4
Case ID:	CI0000014972
Prep:	1
Vial ID:	RN00003246
Tissue of Origin:	Endometrium
Site of Finding:	Omentum
Appearance:	Tumor
Sample Diagnosis (from Pathology Verification):	stromal sarcoma, endometrial, metastatic
Normal:	0%
Lesional:	0%
Tumor:	90%
Tumor Hypo/Acellular Stroma:	5%
Tumor Hypercellular Stroma:	5%
Necrosis:	0%
Bioanalyzer Ratio (28S/18S):	1.5
CASE Diagnosis (from medical center path report):	Sarcoma, stromal, metastatic
Age:	49



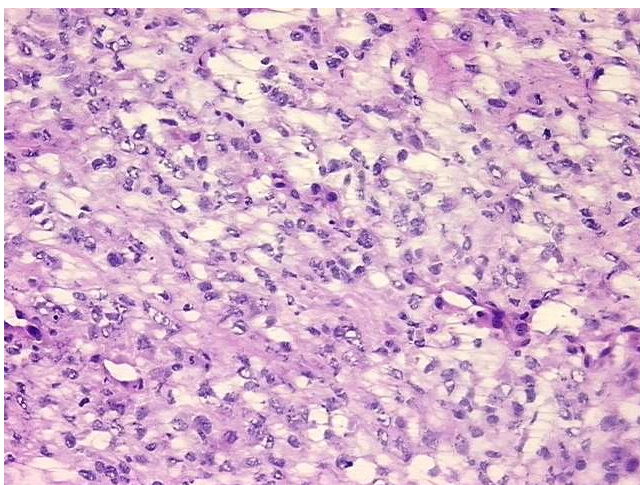
[View online »](#)

Gender:	Female
Race:	White or Caucasian
Tumor Grade:	AJCC G3-4: Poorly differentiated or undifferentiated
Minimum Stage Grouping:	IV
T (Extent of Primary Tumor):	TX
N (Lymph node metastasis):	NX
M (Distant metastasis):	M1
Diagnostic Test Results:	Progesterone receptor ~ PR ! by IHC,Positive, focal; Estrogen receptor ~ ER ! by IHC,Negative; CD10 ~ CALLA ~ Common ALL antigen ! by IHC,Negative
Storage:	Store tissue total RNA at -80°C.
Stability:	These products are stable for one year from date of shipping when stored at -80°C without repeated freeze/thaws.

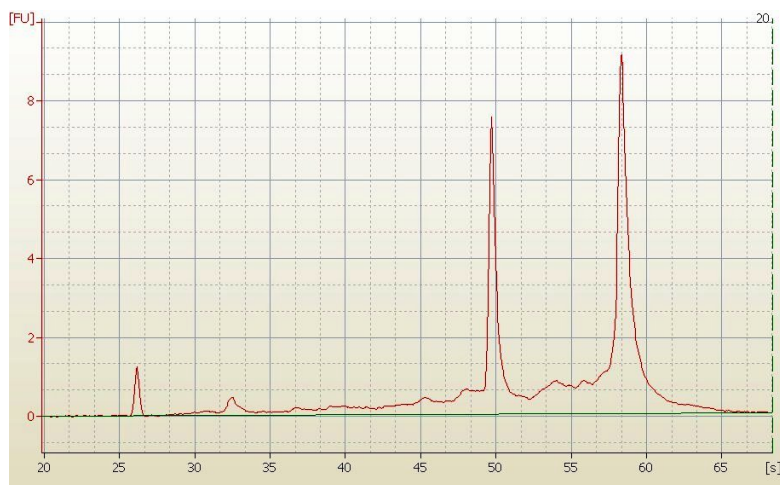
### Product images:



4x Image



20x Image



RNA Electropherogram Image



RNA RT-PCR Image