

Product datasheet for **CR560188**

Tissue Total RNA, Lung

Product data:

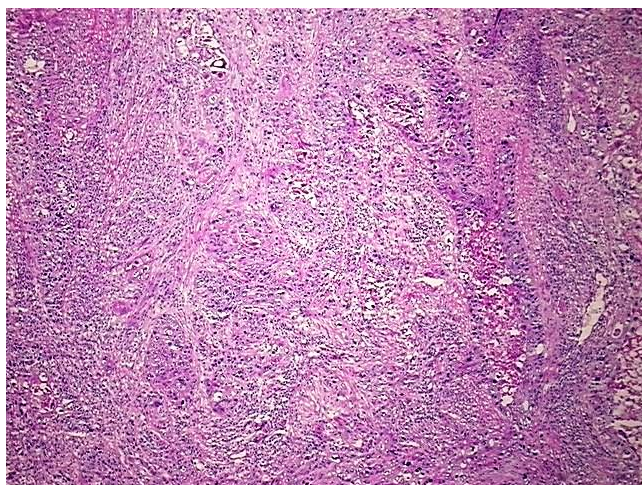
Product Type:	Total RNA
Disease State:	Cancer
Diagnosis Category:	Lung Cancer
Tissue:	Lung
Frozen Sample ID:	FR5B33B3DA
Case ID:	CI0000009749
Prep:	1
Vial ID:	RN000038BB
Tissue of Origin:	Lung
Site of Finding:	Lung
Appearance:	Tumor
Sample Diagnosis (from Pathology Verification):	Carcinoma of lung, squamous cell
Normal:	0%
Lesional:	0%
Tumor:	45%
Tumor Hypo/Acellular Stroma:	50%
Tumor Hypercellular Stroma:	0%
Necrosis:	5%
Pathology Verification notes from H&E review:	Tumor Stroma (Cellular): Desmoplastic reaction, Fibroblastic cells, Inflammatory cells
Bioanalyzer Ratio (28S/18S):	1.23



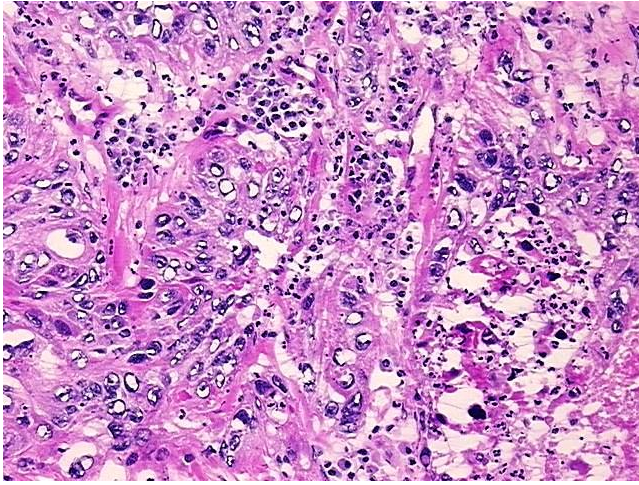
[View online »](#)

CASE Diagnosis (from medical center path report):	Carcinoma of lung, squamous cell
Age:	73
Gender:	Female
Race:	White or Caucasian
Tumor Grade:	AJCC G3: Poorly differentiated
Minimum Stage Grouping:	IIIB
T (Extent of Primary Tumor):	T4
N (Lymph node metastasis):	N0
M (Distant metastasis):	MX
Diagnostic Test Results:	CEA-D14 ~ Carcinoembryonic Antigen - D14,Positive; Cytokeratins (5 and 6) ~ CK5,6 ! by IHC,Positive; Cytokeratin 20 ~ CK20 ! by IHC,Negative; HMB45 melanoma antigen ~ GP100 ! by IHC,Negative; Cytokeratin 7 ~ CK7 ! by IHC,Positive
Storage:	Store tissue total RNA at -80°C.
Stability:	These products are stable for one year from date of shipping when stored at -80°C without repeated freeze/thaws.

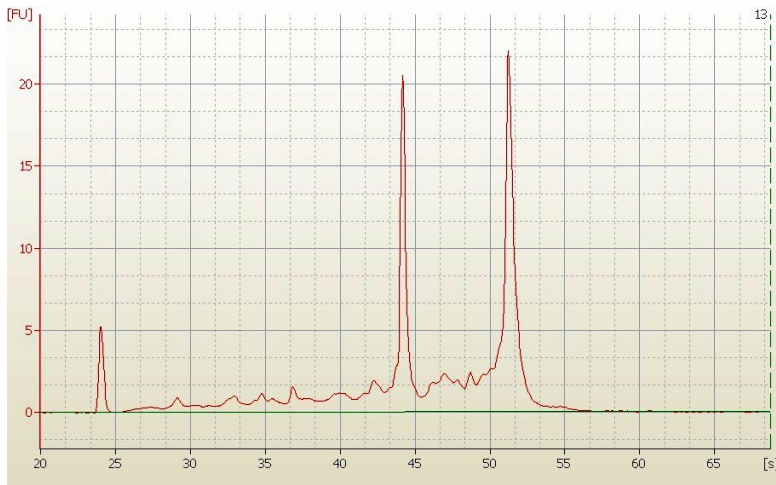
Product images:



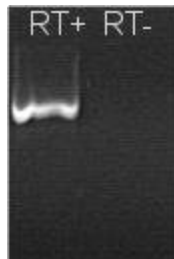
4x Image



20x Image



RNA Electropherogram Image



RNA RT-PCR Image