

Product datasheet for CR560181

Tissue Total RNA, Lung

Product data:

Product Type:	Total RNA
Disease State:	Cancer
Diagnosis Category:	Lung Cancer
Tissue:	Lung
Frozen Sample ID:	FR00028F56
Case ID:	CI0000009770
Prep:	3
Vial ID:	RN00001EE7
Tissue of Origin:	Lung
Site of Finding:	Lung
Appearance:	Tumor
Sample Diagnosis (from Pathology Verification):	Carcinoma of lung, large cell
Normal:	0%
Lesional:	0%
Tumor:	80%
Tumor Hypo/Acellular Stroma:	10%
Tumor Hypercellular Stroma:	10%
Necrosis:	0%
Pathology Verification notes from H&E review:	Large cell carcinoma with neuroendocrine morphology; Stains for chromogranin and synaptophysin (per path report) are negative.
Bioanalyzer Ratio (28S/18S):	1.78



[View online »](#)

CASE Diagnosis (from medical center path report): Carcinoma of lung, large cell

Age: 79

Gender: Male

Race: White or Caucasian

Tumor Grade: Not Reported

Minimum Stage Grouping: IB

T (Extent of Primary Tumor): T2

N (Lymph node metastasis): N0

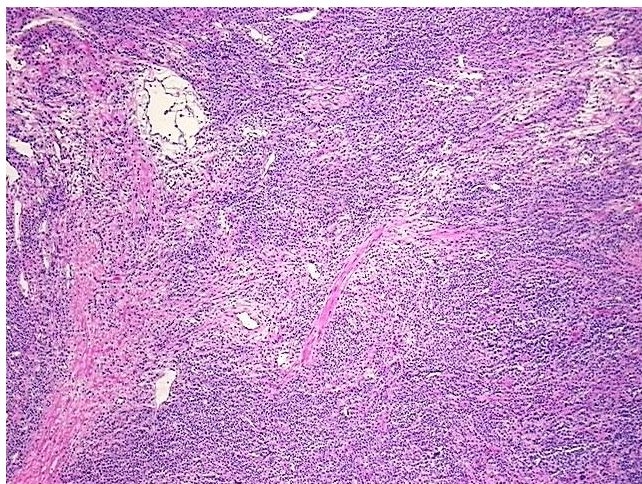
M (Distant metastasis): MX

Diagnostic Test Results: Cytokeratin (Pan) ~ Keratin, Pan ! by IHC,Positive; Synaptophysin ~ SYN ! by IHC,Negative; Chromogranin A ~ Parathyroid secretory protein 1 ! by IHC,Negative

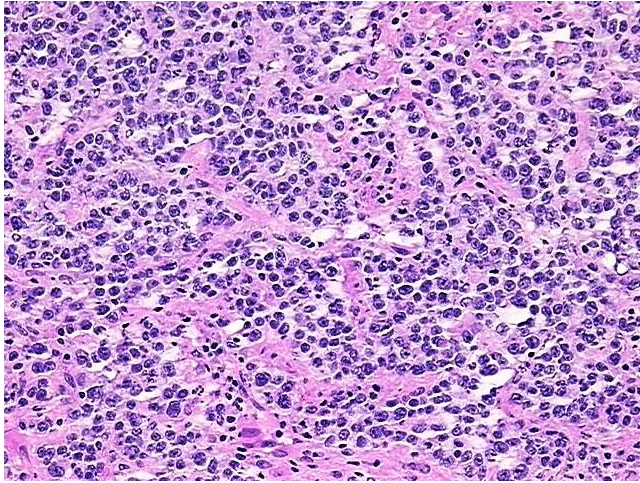
Storage: Store tissue total RNA at -80°C.

Stability: These products are stable for one year from date of shipping when stored at -80°C without repeated freeze/thaws.

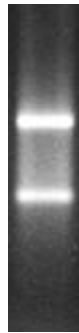
Product images:



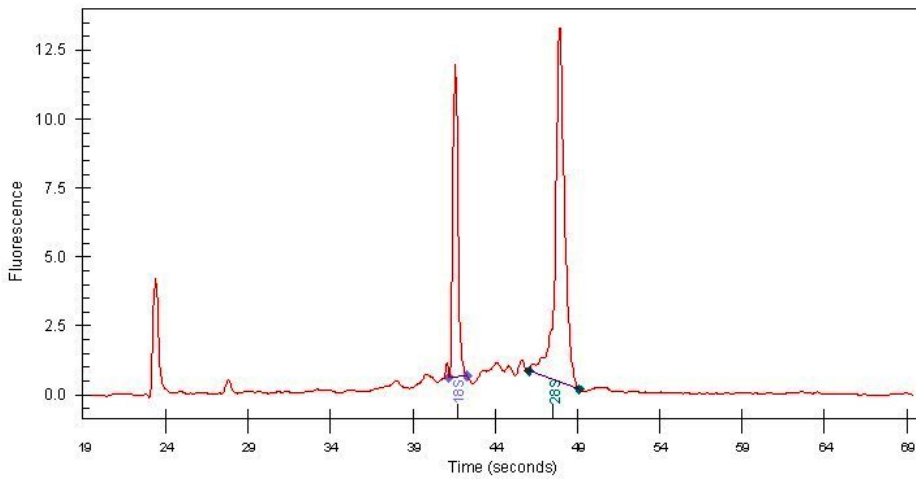
4x Image



20x Image



RNA Gel Image



RNA Electropherogram Image



RNA RT-PCR Image