

Product datasheet for CR560170

Tissue Total RNA, Kidney

Product data:

Product Type:	Total RNA
Disease State:	Cancer
Diagnosis Category:	Renal Cell Carcinoma
Tissue:	Kidney
Frozen Sample ID:	FR0002F40E
Case ID:	CI0000009585
Prep:	1
Vial ID:	RN00001DE1
Tissue of Origin:	Kidney
Site of Finding:	Lung
Appearance:	Tumor
Sample Diagnosis (from Pathology Verification):	Carcinoma of kidney, renal cell, papillary, metastatic
Normal:	0%
Lesional:	0%
Tumor:	90%
Tumor Hypo/Acellular Stroma:	10%
Tumor Hypercellular Stroma:	0%
Necrosis:	0%
Pathology Verification notes from H&E review:	Inflammation: Moderate Mixed inflammatory infiltrate
Bioanalyzer Ratio (28S/18S):	1.7



[View online »](#)

CASE Diagnosis (from medical center path report): Carcinoma of kidney, renal cell, papillary, metastatic

Age: 57

Gender: Male

Race: White or Caucasian

Tumor Grade: Not Reported

Minimum Stage Grouping: IV

T (Extent of Primary Tumor): TX

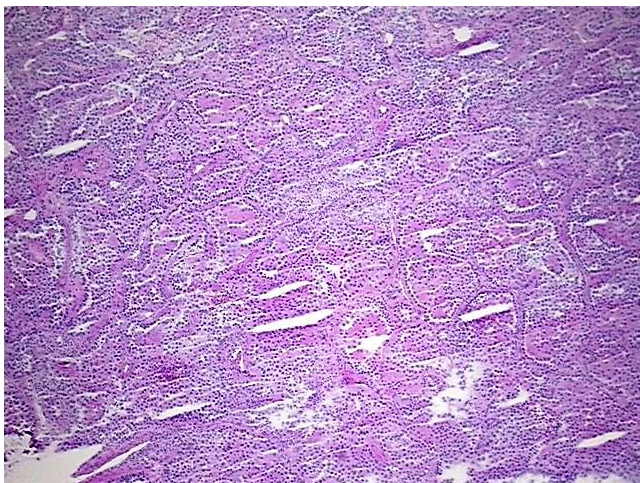
N (Lymph node metastasis): NX

M (Distant metastasis): M1

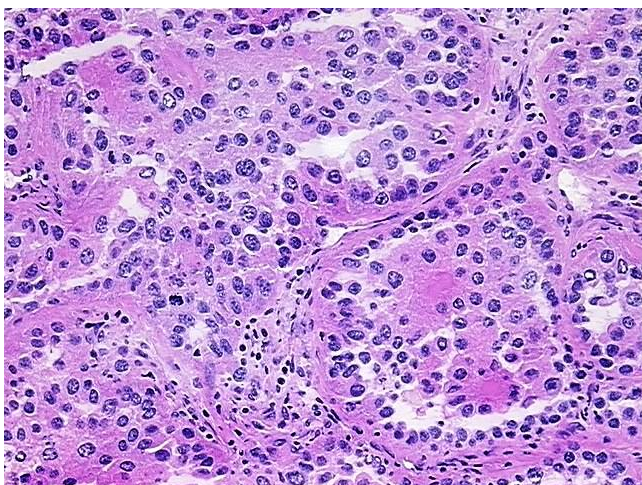
Storage: Store tissue total RNA at -80°C.

Stability: These products are stable for one year from date of shipping when stored at -80°C without repeated freeze/thaws.

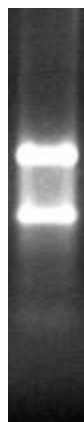
Product images:



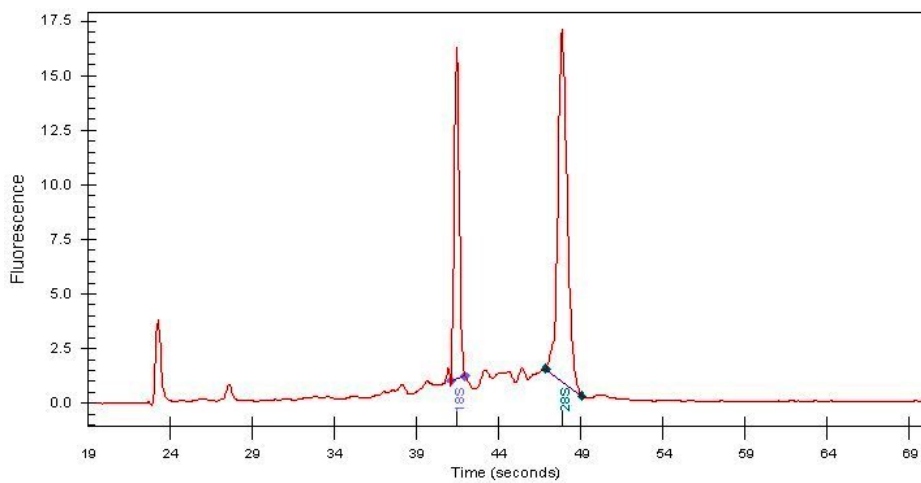
4x Image



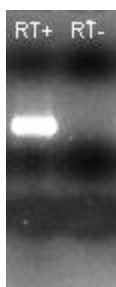
20x Image



RNA Gel Image



RNA Electropherogram Image



RNA RT-PCR Image