

Product datasheet for CR560158

Tissue Total RNA, Testis

Product data:

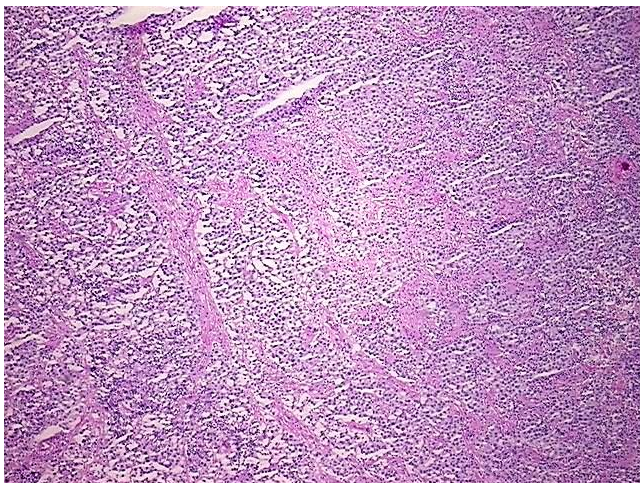
Product Type:	Total RNA
Disease State:	Cancer
Diagnosis Category:	Testicular Cancer
Tissue:	Testis
Frozen Sample ID:	FR0002B68F
Case ID:	CI0000009699
Prep:	1
Vial ID:	RN0000176B
Tissue of Origin:	Testis
Site of Finding:	Testis
Appearance:	Tumor
Sample Diagnosis (from Pathology Verification):	Seminoma of testis
Normal:	0%
Lesional:	0%
Tumor:	75%
Tumor Hypo/Acellular Stroma:	10%
Tumor Hypercellular Stroma:	13%
Necrosis:	2%
Pathology Verification notes from H&E review:	cellular stroma: 100% mixed lymphocytes and histiocytic granulomas; hypo/acellular stroma: 100% fibrosis
Bioanalyzer Ratio (28S/18S):	1.44



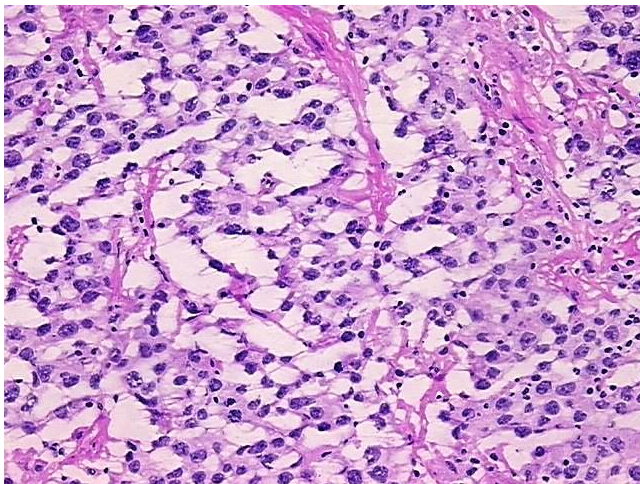
[View online »](#)

CASE Diagnosis (from medical center path report):	Seminoma of testis
Age:	60
Gender:	Male
Race:	White or Caucasian
Tumor Grade:	Not Reported
Minimum Stage Grouping:	I
T (Extent of Primary Tumor):	T1
N (Lymph node metastasis):	NX
M (Distant metastasis):	MX
Storage:	Store tissue total RNA at -80°C.
Stability:	These products are stable for one year from date of shipping when stored at -80°C without repeated freeze/thaws.

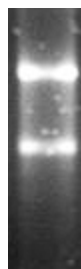
Product images:



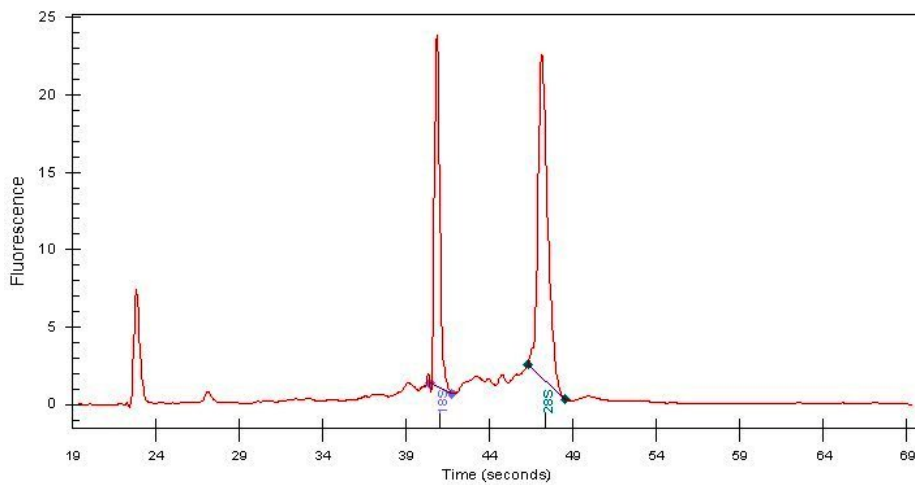
4x Image



20x Image



RNA Gel Image



RNA Electropherogram Image



RNA RT-PCR Image