

Product datasheet for CR560157

Tissue Total RNA, Ovary

Product data:

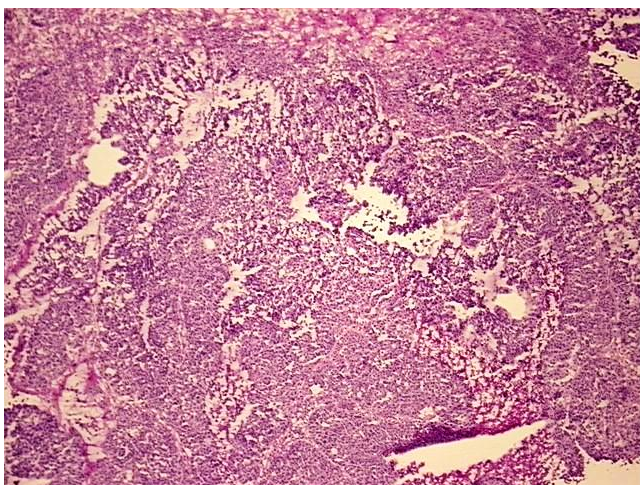
Product Type:	Total RNA
Disease State:	Cancer
Diagnosis Category:	Ovarian Cancer
Tissue:	Ovary
Frozen Sample ID:	FR0002B127
Case ID:	CI0000009640
Prep:	1
Vial ID:	RN000033DE
Tissue of Origin:	Ovary
Site of Finding:	Ovary
Appearance:	Tumor
Sample Diagnosis (from Pathology Verification):	Adenocarcinoma of ovary, endometrioid, papillary serous
Normal:	0%
Lesional:	0%
Tumor:	70%
Tumor Hypo/Acellular Stroma:	10%
Tumor Hypercellular Stroma:	20%
Necrosis:	0%
Pathology Verification notes from H&E review:	Tumor Stroma (Hypo/Acellular): Fibrosis
Bioanalyzer Ratio (28S/18S):	1.09



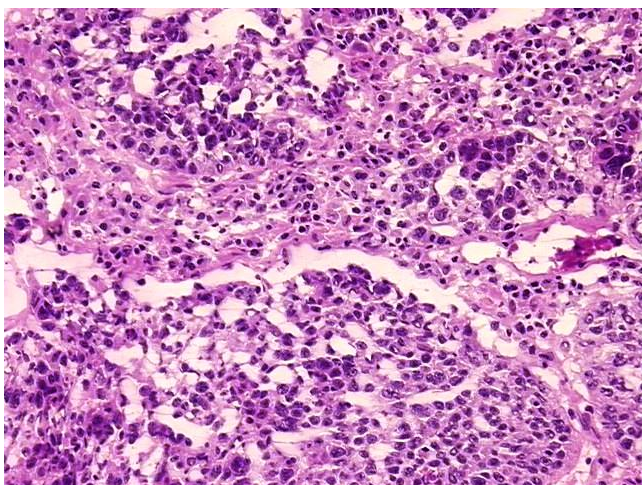
[View online »](#)

CASE Diagnosis (from medical center path report):	Adenocarcinoma of ovary, endometrioid, papillary serous
Age:	80
Gender:	Female
Race:	White or Caucasian
Tumor Grade:	FIGO G3: Poorly differentiated
Minimum Stage Grouping:	IV
T (Extent of Primary Tumor):	T3c
N (Lymph node metastasis):	NX
M (Distant metastasis):	M1
Diagnostic Test Results:	Cytokeratin 7 ~ CK7 ! by IHC,Positive; Cytokeratin 20 ~ CK20 ! by IHC,Positive, focal
Storage:	Store tissue total RNA at -80°C.
Stability:	These products are stable for one year from date of shipping when stored at -80°C without repeated freeze/thaws.

Product images:



4x Image



20x Image