

Product datasheet for **CR560156**

Tissue Total RNA, Pancreas

Product data:

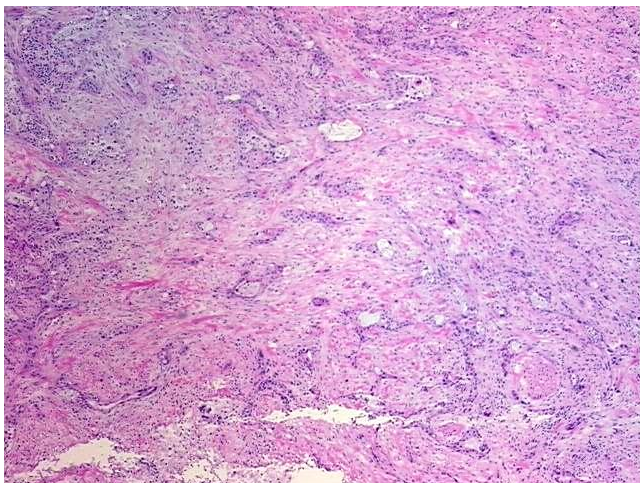
Product Type:	Total RNA
Disease State:	Cancer
Diagnosis Category:	Pancreatic Cancer
Tissue:	Pancreas
Frozen Sample ID:	FR0002B113
Case ID:	CI0000009651
Prep:	1
Vial ID:	RN0000158C
Tissue of Origin:	Pancreas
Site of Finding:	Pancreas
Appearance:	Tumor
Sample Diagnosis (from Pathology Verification):	Adenocarcinoma of pancreas, ductal
Normal:	5%
Lesional:	0%
Tumor:	45%
Tumor Hypo/Acellular Stroma:	50%
Tumor Hypercellular Stroma:	0%
Necrosis:	0%
Pathology Verification notes from H&E review:	tumor stroma contains neutrophilic and lymphoplasmacytic infiltrate
Bioanalyzer Ratio (28S/18S):	1.62



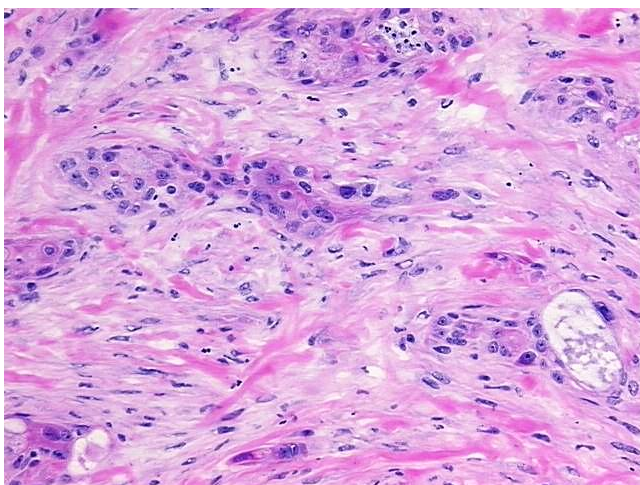
[View online »](#)

CASE Diagnosis (from medical center path report):	Adenocarcinoma of pancreas, ductal
Age:	75
Gender:	Male
Race:	White or Caucasian
Tumor Grade:	AJCC G2: Moderately differentiated
Minimum Stage Grouping:	IIB
T (Extent of Primary Tumor):	T3
N (Lymph node metastasis):	N1
M (Distant metastasis):	MX
Storage:	Store tissue total RNA at -80°C.
Stability:	These products are stable for one year from date of shipping when stored at -80°C without repeated freeze/thaws.

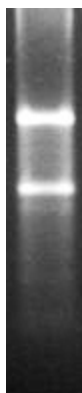
Product images:



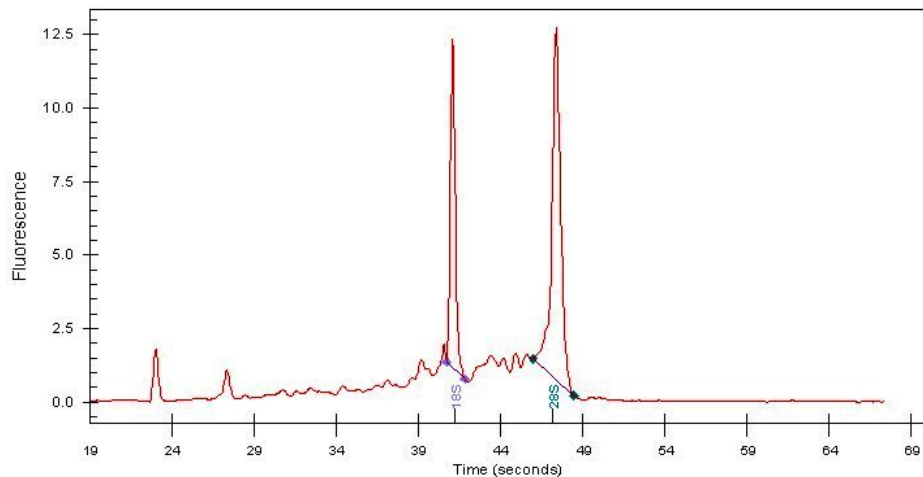
4x Image



20x Image



RNA Gel Image



RNA Electropherogram Image



RNA RT-PCR Image