

Product datasheet for CR560155

Tissue Total RNA, Gastroesophageal junction

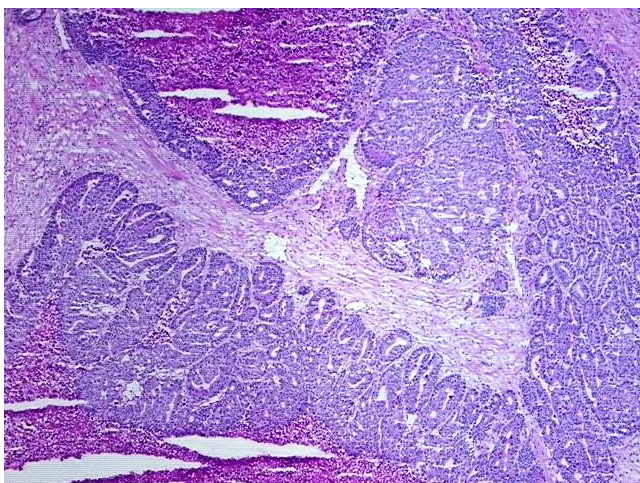
Product data:

Product Type:	Total RNA
Disease State:	Cancer
Diagnosis Category:	Esophageal/Gastroesophageal Cancer
Tissue:	Gastroesophageal junction
Frozen Sample ID:	FR65EE3F46
Case ID:	CI0000010274
Prep:	1
Vial ID:	RN00002FC1
Tissue of Origin:	Gastroesophageal junction
Site of Finding:	Lymph node
Appearance:	Tumor
Sample Diagnosis (from Pathology Verification):	Adenocarcinoma of gastroesophageal junction, metastatic
Normal:	10%
Lesional:	0%
Tumor:	60%
Tumor Hypo/Acellular Stroma:	15%
Tumor Hypercellular Stroma:	0%
Necrosis:	15%
Bioanalyzer Ratio (28S/18S):	1.68
CASE Diagnosis (from medical center path report):	Adenocarcinoma of gastroesophageal junction
Age:	51

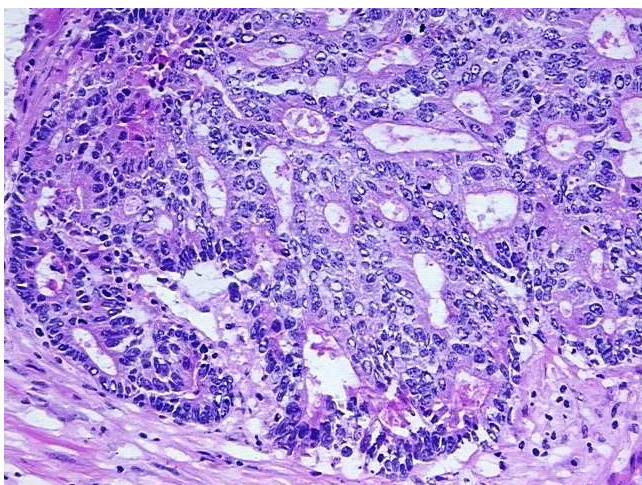


[View online »](#)

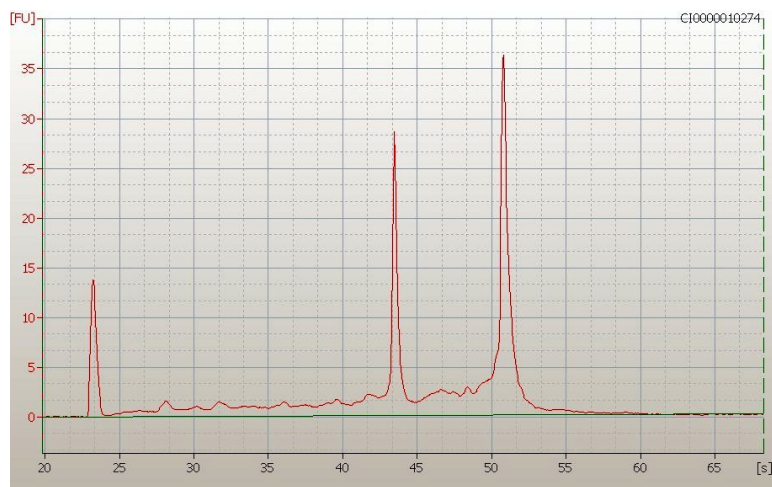
Gender:	Male
Race:	White or Caucasian
Tumor Grade:	AJCC G2: Moderately differentiated
Minimum Stage Grouping:	IV
T (Extent of Primary Tumor):	T3
N (Lymph node metastasis):	N1
M (Distant metastasis):	M1
Storage:	Store tissue total RNA at -80°C.
Stability:	These products are stable for one year from date of shipping when stored at -80°C without repeated freeze/thaws.

Product images:

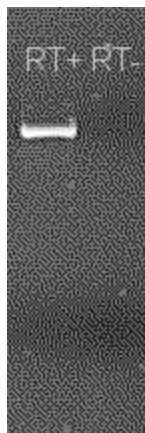
4x Image



20x Image



RNA Electropherogram Image



RNA RT-PCR Image