

Product datasheet for CR560149

Tissue Total RNA, Ovary: right

Product data:

Product Type:	Total RNA
Disease State:	Cancer
Diagnosis Category:	Ovarian Cancer
Tissue:	Ovary
Frozen Sample ID:	FR0002CE0D
Case ID:	CI0000010213
Prep:	6
Vial ID:	RN00003846
Tissue of Origin:	Ovary: right
Site of Finding:	Ovary: right
Appearance:	Tumor
Sample Diagnosis (from Pathology Verification):	Adenocarcinoma of ovary, clear cell
Normal:	10%
Lesional:	0%
Tumor:	75%
Tumor Hypo/Acellular Stroma:	0%
Tumor Hypercellular Stroma:	5%
Necrosis:	10%
Pathology Verification notes from H&E review:	Epithelial carcinoma of ovary, clear cell type
Bioanalyzer Ratio (28S/18S):	1.65



[View online »](#)

CASE Diagnosis (from medical center path report): Adenocarcinoma of ovary, clear cell

Age: 54

Gender: Female

Race: White or Caucasian

Tumor Grade: FIGO G3: Poorly differentiated

Minimum Stage Grouping: IA

T (Extent of Primary Tumor): T1a

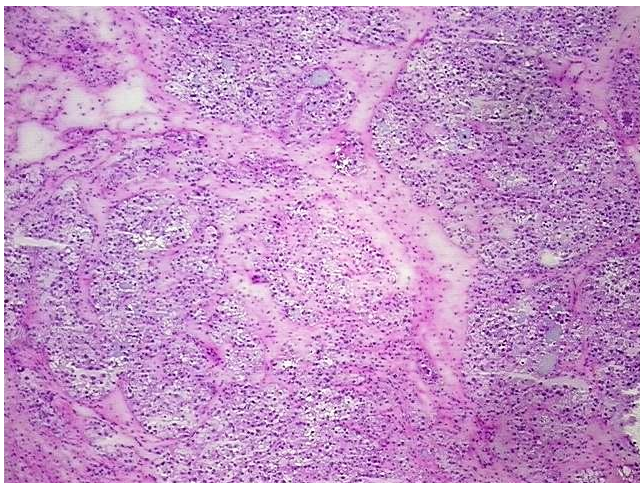
N (Lymph node metastasis): N0

M (Distant metastasis): MX

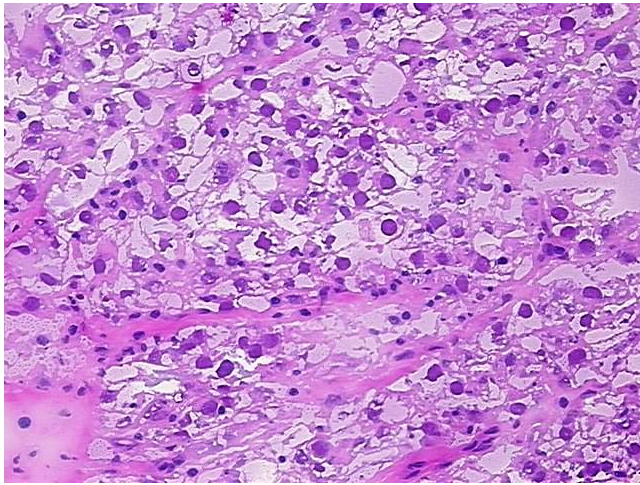
Storage: Store tissue total RNA at -80°C.

Stability: These products are stable for one year from date of shipping when stored at -80°C without repeated freeze/thaws.

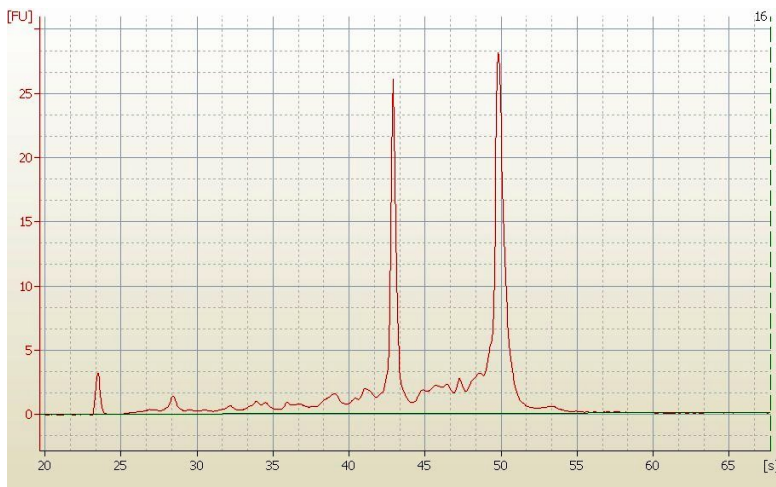
Product images:



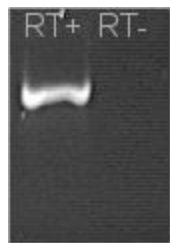
4x Image



20x Image



RNA Electropherogram Image



RNA RT-PCR Image