

Product datasheet for **CR560140**

Tissue Total RNA, Kidney

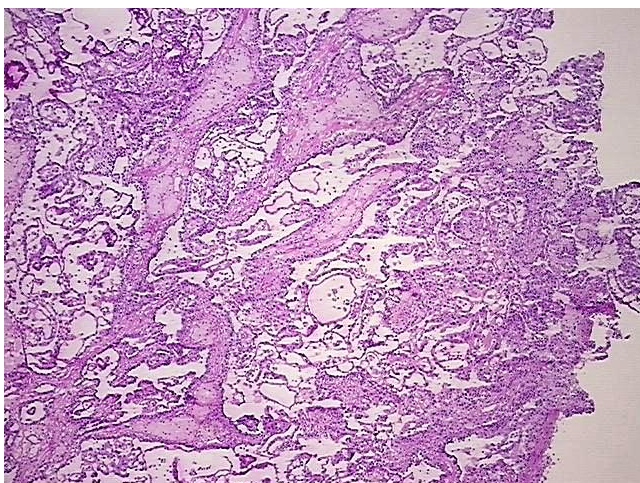
Product data:

Product Type:	Total RNA
Disease State:	Cancer
Diagnosis Category:	Renal Cell Carcinoma
Tissue:	Kidney
Frozen Sample ID:	FR0002F76F
Case ID:	CI0000009991
Prep:	2
Vial ID:	RN0000196A
Tissue of Origin:	Kidney
Site of Finding:	Kidney
Appearance:	Tumor
Sample Diagnosis (from Pathology Verification):	Carcinoma of kidney, renal cell, papillary
Normal:	0%
Lesional:	0%
Tumor:	70%
Tumor Hypo/Acellular Stroma:	0%
Tumor Hypercellular Stroma:	0%
Necrosis:	30%
Bioanalyzer Ratio (28S/18S):	1.54
CASE Diagnosis (from medical center path report):	Carcinoma of kidney, renal cell, papillary
Age:	59

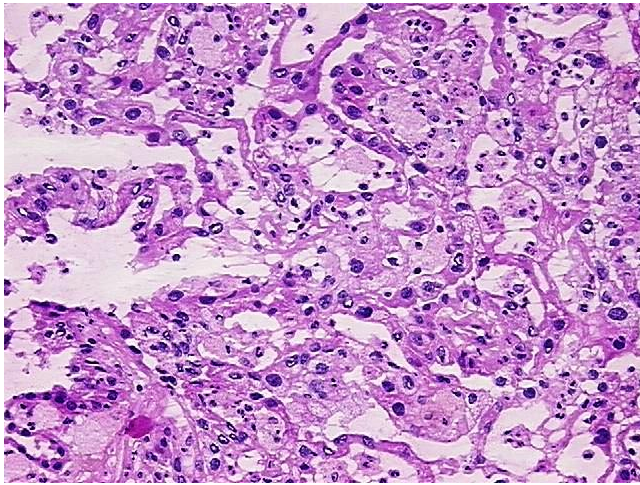


[View online »](#)

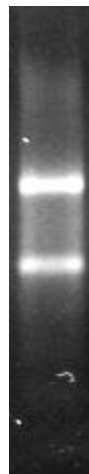
Gender:	Male
Race:	Black or African American
Tumor Grade:	Fuhrman G2: Nuclei slightly irregular
Minimum Stage Grouping:	II
T (Extent of Primary Tumor):	T2
N (Lymph node metastasis):	NX
M (Distant metastasis):	MX
Storage:	Store tissue total RNA at -80°C.
Stability:	These products are stable for one year from date of shipping when stored at -80°C without repeated freeze/thaws.

Product images:

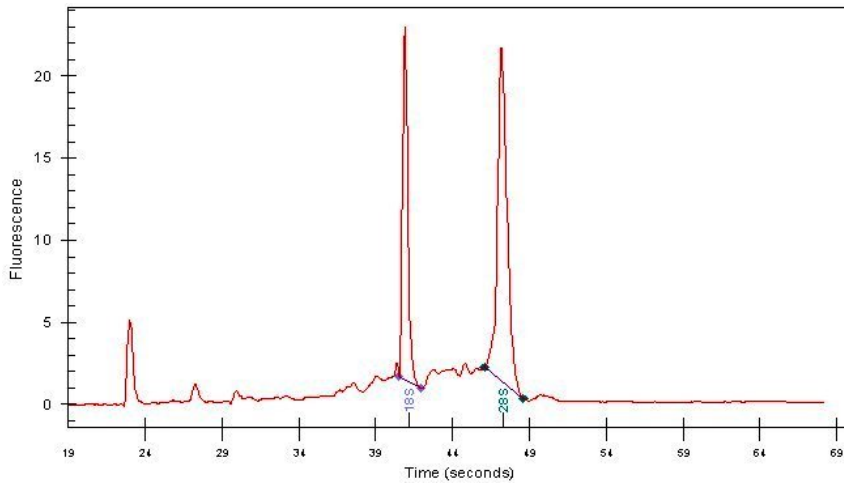
4x Image



20x Image



RNA Gel Image



RNA Electropherogram Image



RNA RT-PCR Image