

Product datasheet for CR560131

Tissue Total RNA, Ovary: left

Product data:

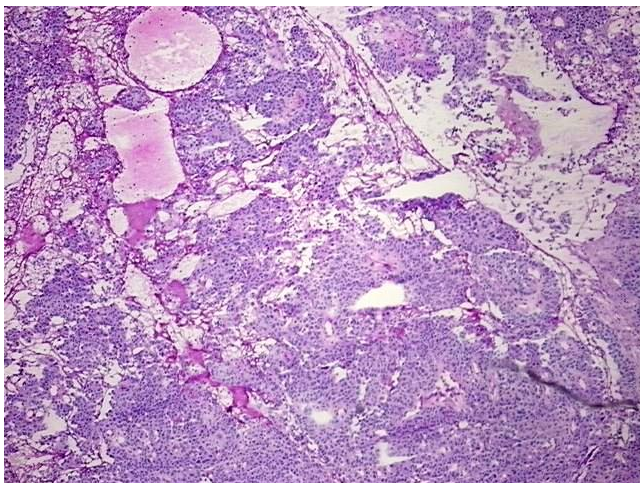
| | |
|---|--|
| Product Type: | Total RNA |
| Disease State: | Cancer |
| Diagnosis Category: | Ovarian Cancer |
| Tissue: | Ovary |
| Frozen Sample ID: | FR000295BA |
| Case ID: | CI0000010070 |
| Prep: | 2 |
| Vial ID: | RN00003844 |
| Tissue of Origin: | Ovary: left |
| Site of Finding: | Ovary: left |
| Appearance: | Tumor |
| Sample Diagnosis (from Pathology Verification): | Adenocarcinoma of ovary, serous |
| Normal: | 40% |
| Lesional: | 0% |
| Tumor: | 40% |
| Tumor Hypo/Acellular Stroma: | 10% |
| Tumor Hypercellular Stroma: | 10% |
| Necrosis: | 0% |
| Pathology Verification notes from H&E review: | Tumor Stroma (Cellular): Desmoplastic reaction; Tumor Stroma (Hypo/Acellular): Fibrosis; Non Tumor Structures: 40% Ovarian stroma, 60% Hilar vessels |
| Bioanalyzer Ratio (28S/18S): | 1.82 |



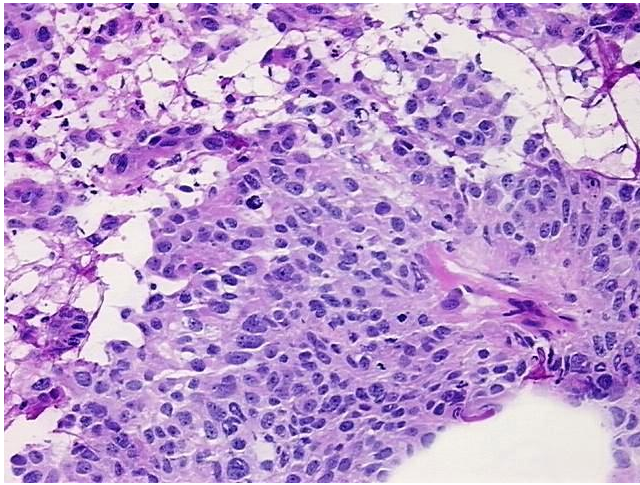
[View online »](#)

| | |
|---|--|
| CASE Diagnosis (from medical center path report): | Adenocarcinoma of ovary, serous |
| Age: | 74 |
| Gender: | Female |
| Race: | White or Caucasian |
| Tumor Grade: | FIGO G3: Poorly differentiated |
| Minimum Stage Grouping: | IIIB |
| T (Extent of Primary Tumor): | T3b |
| N (Lymph node metastasis): | NX |
| M (Distant metastasis): | MX |
| Storage: | Store tissue total RNA at -80°C. |
| Stability: | These products are stable for one year from date of shipping when stored at -80°C without repeated freeze/thaws. |

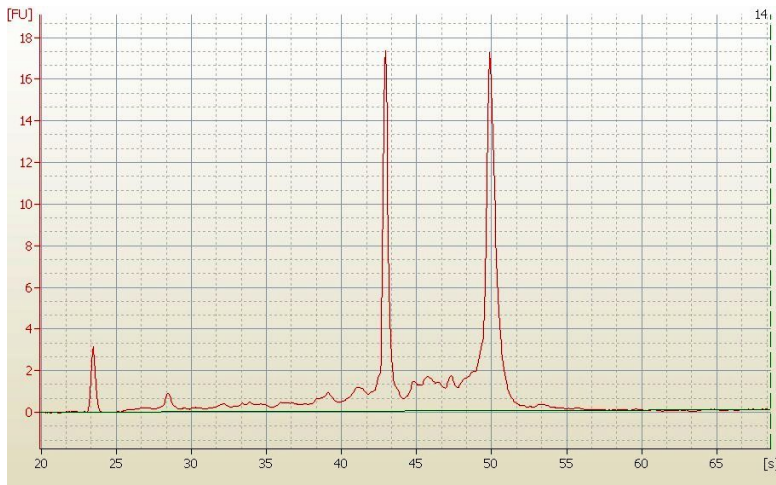
Product images:



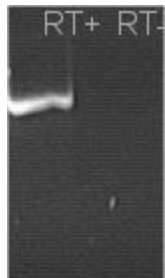
4x Image



20x Image



RNA Electropherogram Image



RNA RT-PCR Image