

Product datasheet for CR560129

Tissue Total RNA, Esophagus

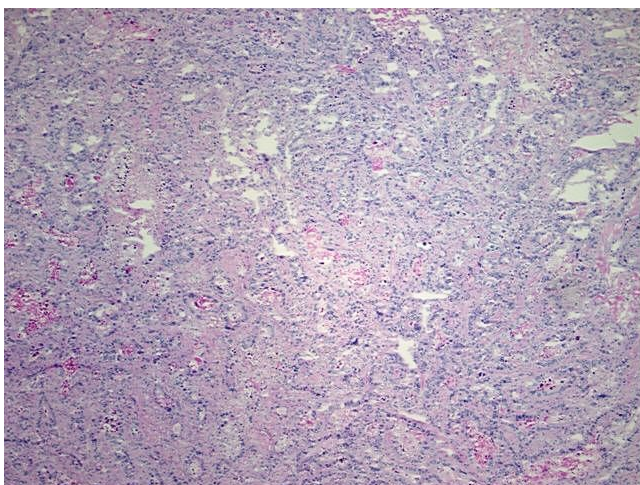
Product data:

Product Type:	Total RNA
Disease State:	Cancer
Diagnosis Category:	Esophageal/Gastroesophageal Cancer
Tissue:	Esophagus
Frozen Sample ID:	FR000040FB
Case ID:	CI0000000138
Prep:	2
Vial ID:	RN000011FF
Tissue of Origin:	Esophagus
Site of Finding:	Lung
Appearance:	Tumor
Sample Diagnosis (from Pathology Verification):	Adenocarcinoma, metastatic, consistent with esophagus primary
Normal:	0%
Lesional:	0%
Tumor:	75%
Tumor Hypo/Acellular Stroma:	15%
Tumor Hypercellular Stroma:	5%
Necrosis:	5%
Bioanalyzer Ratio (28S/18S):	1.22
CASE Diagnosis (from medical center path report):	Adenocarcinoma, metastatic, consistent with esophagus primary
Age:	72

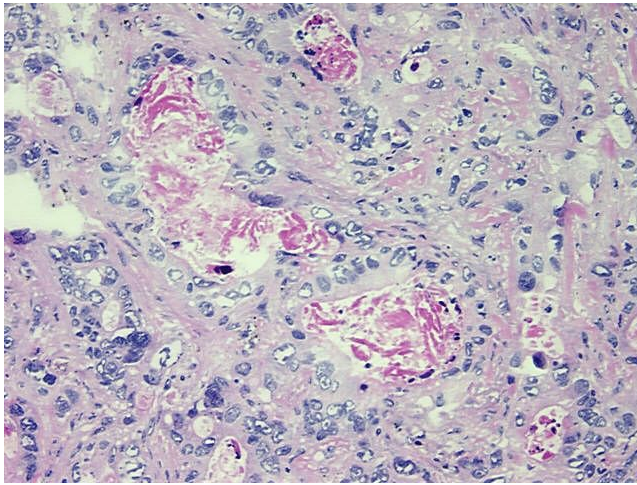


[View online »](#)

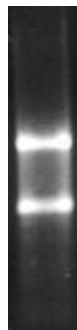
Gender:	Male
Tumor Grade:	AJCC G2: Moderately differentiated
Minimum Stage Grouping:	IV
T (Extent of Primary Tumor):	TX
N (Lymph node metastasis):	NX
M (Distant metastasis):	M1
Storage:	Store tissue total RNA at -80°C.
Stability:	These products are stable for one year from date of shipping when stored at -80°C without repeated freeze/thaws.

Product images:

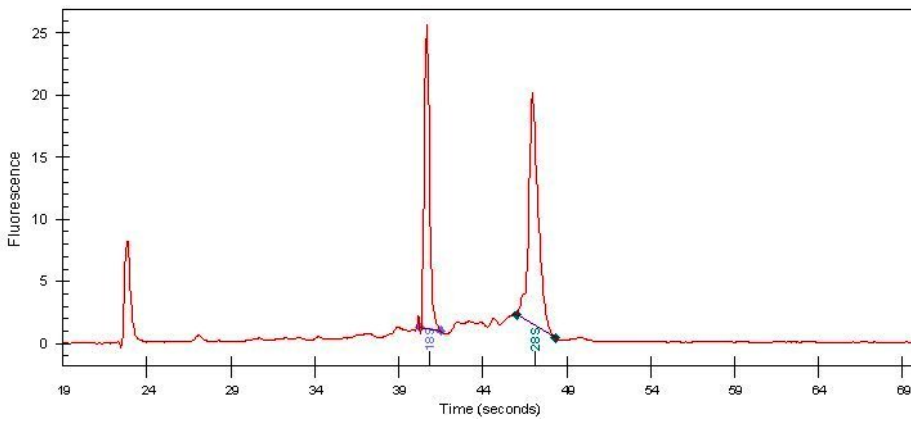
4x Image



20x Image



RNA Gel Image



RNA Electropherogram Image



RNA RT-PCR Image