

Product datasheet for CR560121

Tissue Total RNA, Lymphoid tissue

Product data:

| | |
|---|---|
| Product Type: | Total RNA |
| Disease State: | Cancer |
| Diagnosis Category: | Lymphoma |
| Tissue: | Lymphoid tissue |
| Frozen Sample ID: | FR00028EE7 |
| Case ID: | CI0000010026 |
| Prep: | 1 |
| Vial ID: | RN00001947 |
| Tissue of Origin: | Lymphoid tissue |
| Site of Finding: | Spleen |
| Appearance: | Tumor |
| Sample Diagnosis (from Pathology Verification): | Lymphoma, marginal zone B-cell, splenic |
| Normal: | 30% |
| Lesional: | 0% |
| Tumor: | 70% |
| Tumor Hypo/Acellular Stroma: | 0% |
| Tumor Hypercellular Stroma: | 0% |
| Necrosis: | 0% |
| Bioanalyzer Ratio (28S/18S): | 1.41 |
| CASE Diagnosis (from medical center path report): | Lymphoma, marginal zone B-cell, splenic |
| Age: | 55 |



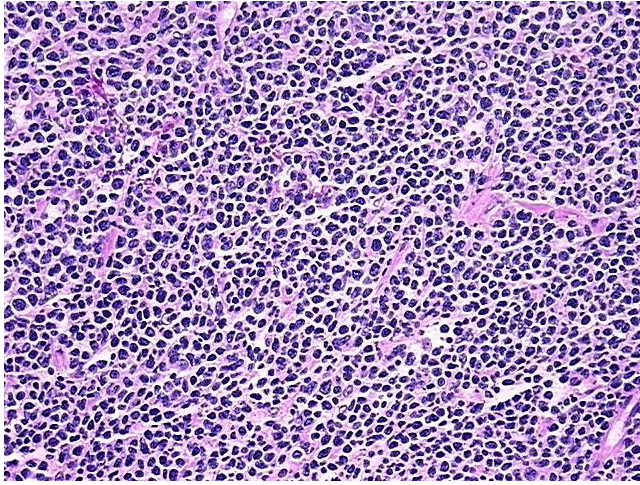
[View online »](#)

| | |
|------------------------------|---|
| Gender: | Male |
| Race: | White or Caucasian |
| Tumor Grade: | Not Reported |
| Minimum Stage Grouping: | IIE |
| T (Extent of Primary Tumor): | Not applicable |
| N (Lymph node metastasis): | Not applicable |
| M (Distant metastasis): | Not applicable |
| Diagnostic Test Results: | CD3 ~ Leu4 ~ UCHT1 ! by FC,Negative; CD19 ~ B4 ~ Leu12 ! by IHC,Positive; CD22 ~ Leu14 ! by IHC,Positive; CD33 ~ My9 ! by IHC,Negative; Kappa light chain ! by IHC,Positive; CD8 ~ Leu2a ~ T8 ! by IHC,Negative; Lambda light chain ! by IHC,Ne |
| Storage: | Store tissue total RNA at -80°C. |
| Stability: | These products are stable for one year from date of shipping when stored at -80°C without repeated freeze/thaws. |

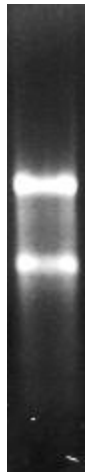
Product images:



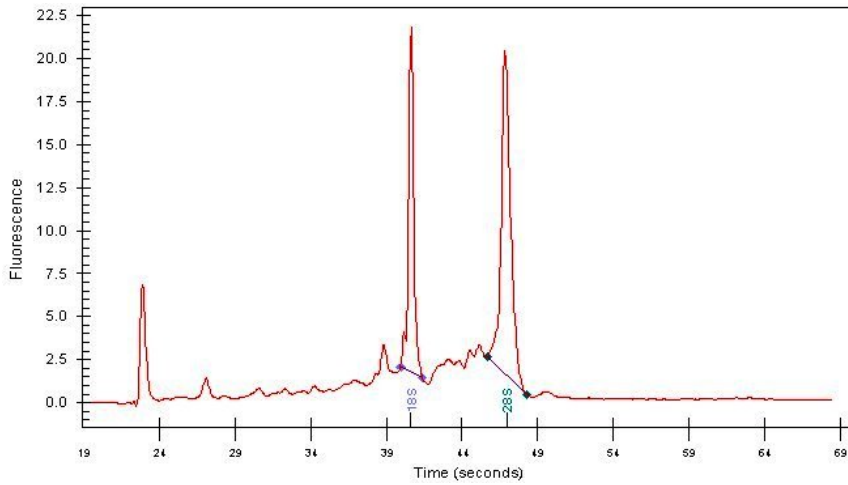
4x Image



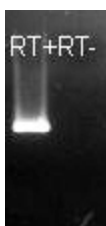
20x Image



RNA Gel Image



RNA Electropherogram Image



RNA RT-PCR Image