

Product datasheet for CR560090

Tissue Total RNA, Kidney

Product data:

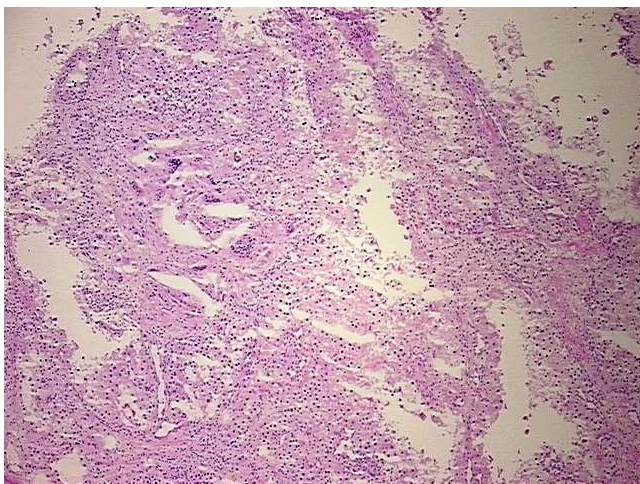
Product Type:	Total RNA
Disease State:	Cancer
Diagnosis Category:	Renal Cell Carcinoma
Tissue:	Kidney
Frozen Sample ID:	FR00029B6B
Case ID:	CI0000009875
Prep:	1
Vial ID:	RN00003D9D
Tissue of Origin:	Kidney
Site of Finding:	Kidney
Appearance:	Tumor
Sample Diagnosis (from Pathology Verification):	Carcinoma of kidney, renal cell, clear cell
Normal:	20%
Lesional:	0%
Tumor:	50%
Tumor Hypo/Acellular Stroma:	10%
Tumor Hypercellular Stroma:	10%
Necrosis:	10%
Bioanalyzer Ratio (28S/18S):	1.31
CASE Diagnosis (from medical center path report):	Carcinoma of kidney, renal cell, clear cell
Age:	49



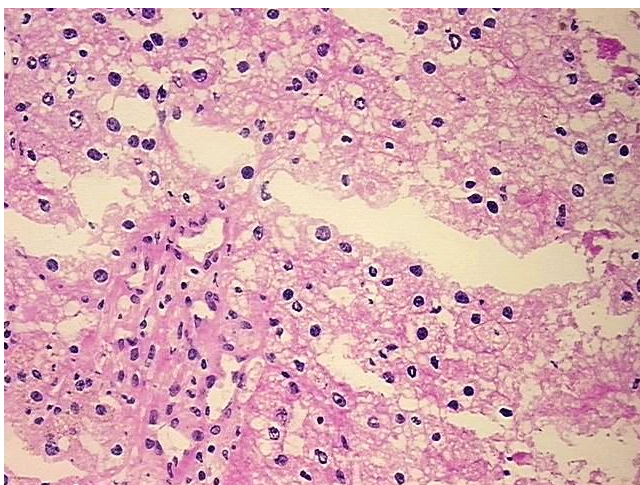
[View online »](#)

Gender:	Male
Race:	White or Caucasian
Tumor Grade:	Fuhrman G3: Nuclei very irregular
Minimum Stage Grouping:	IV
T (Extent of Primary Tumor):	T3a
N (Lymph node metastasis):	N1
M (Distant metastasis):	M1
Diagnostic Test Results:	Cytokeratin (Pan) ~ Keratin, Pan ! by IHC,Negative
Storage:	Store tissue total RNA at -80°C.
Stability:	These products are stable for one year from date of shipping when stored at -80°C without repeated freeze/thaws.

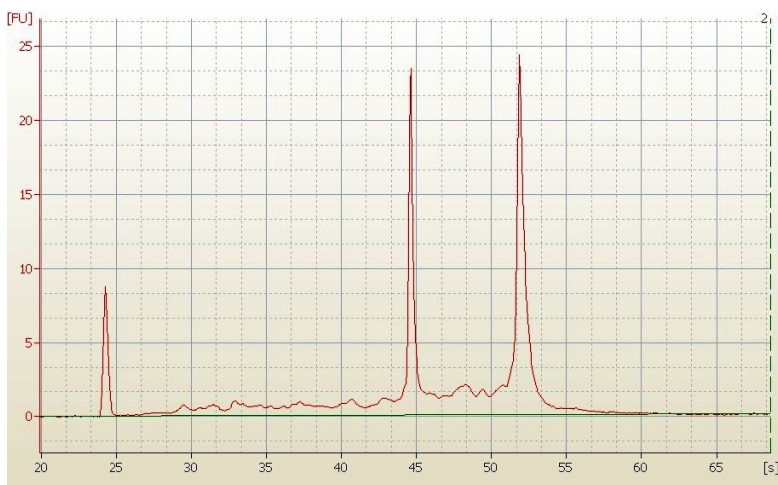
Product images:



4x Image



20x Image



RNA Electropherogram Image



RNA RT-PCR Image