

Product datasheet for **CR560089**

Tissue Total RNA, Breast

Product data:

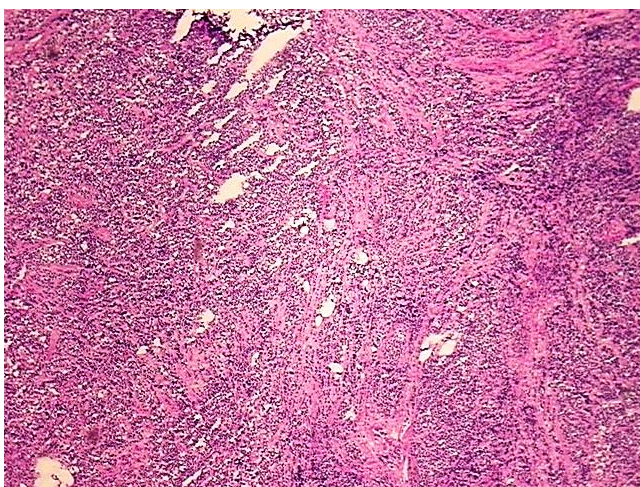
Product Type:	Total RNA
Disease State:	Cancer
Diagnosis Category:	Breast Cancer
Tissue:	Breast
Frozen Sample ID:	FR000298AB
Case ID:	CI0000009885
Prep:	1
Vial ID:	RN000016DE
Tissue of Origin:	Breast
Site of Finding:	Breast
Appearance:	Tumor
Sample Diagnosis (from Pathology Verification):	Adenocarcinoma of breast, ductal
Normal:	0%
Lesional:	0%
Tumor:	90%
Tumor Hypo/Acellular Stroma:	5%
Tumor Hypercellular Stroma:	0%
Necrosis:	5%
Bioanalyzer Ratio (28S/18S):	1.4
CASE Diagnosis (from medical center path report):	Adenocarcinoma of breast, ductal
Age:	65



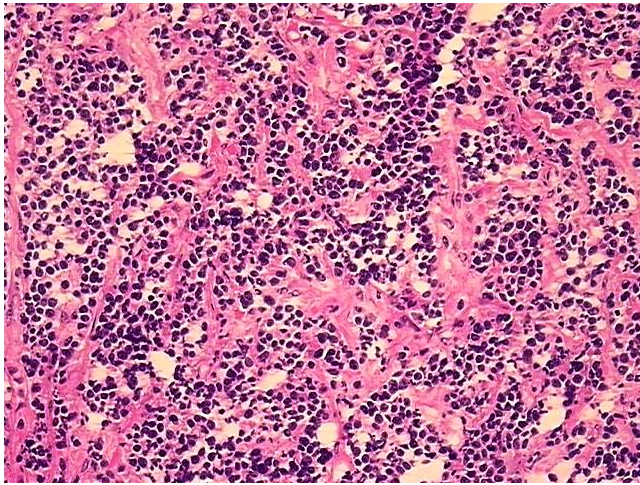
[View online »](#)

Gender:	Female
Race:	Black or African American
Tumor Grade:	NSABP Grade: Nuclear 3 of 3 & Histologic 3 of 3
Minimum Stage Grouping:	IIA
T (Extent of Primary Tumor):	T2
N (Lymph node metastasis):	N0
M (Distant metastasis):	MX
Diagnostic Test Results:	Cytokeratin (Pan) ~ Keratin, Pan ! by IHC,Positive; Progesterone receptor ~ PR ! by IHC,Positive; Synaptophysin ~ SYN ! by IHC,Negative; Estrogen receptor ~ ER ! by IHC,Negative; ERBB1 ~ EGFR ~ Epidermal growth factor receptor ! by IHC,Negativ
Storage:	Store tissue total RNA at -80°C.
Stability:	These products are stable for one year from date of shipping when stored at -80°C without repeated freeze/thaws.

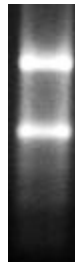
Product images:



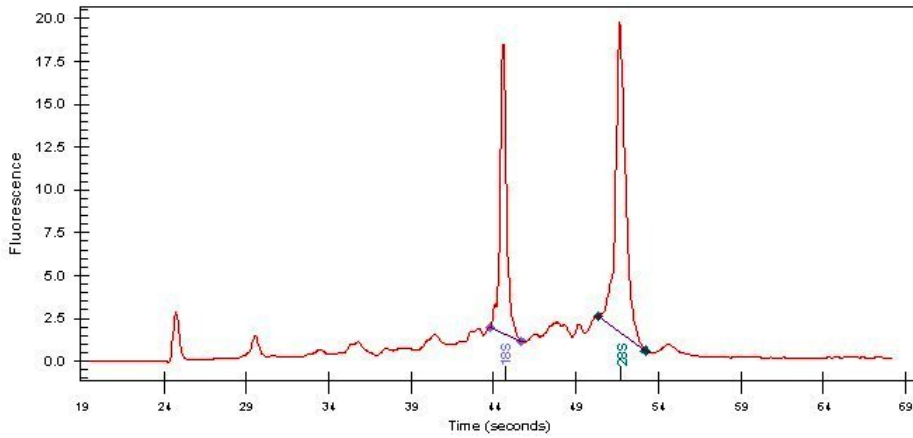
4x Image



20x Image



RNA Gel Image



RNA Electropherogram Image



RNA RT-PCR Image