

Product datasheet for CR560081

Tissue Total RNA, Soft tissue

Product data:

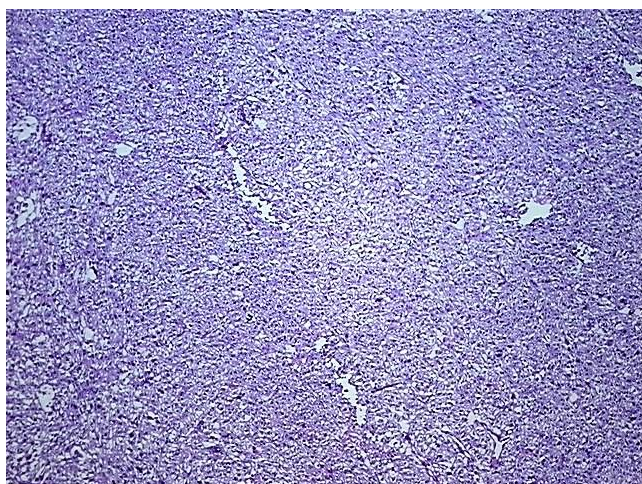
Product Type:	Total RNA
Disease State:	Cancer
Diagnosis Category:	Sarcoma
Tissue:	Smooth muscle
Frozen Sample ID:	FR0002E225
Case ID:	CI0000010641
Prep:	1
Vial ID:	RN00003B82
Tissue of Origin:	Soft tissue
Site of Finding:	Leg
Appearance:	Tumor
Sample Diagnosis (from Pathology Verification):	Leiomyosarcoma
Normal:	0%
Lesional:	0%
Tumor:	98%
Tumor Hypo/Acellular Stroma:	0%
Tumor Hypercellular Stroma:	2%
Necrosis:	0%
Bioanalyzer Ratio (28S/18S):	1.72
CASE Diagnosis (from medical center path report):	Leiomyosarcoma
Age:	87



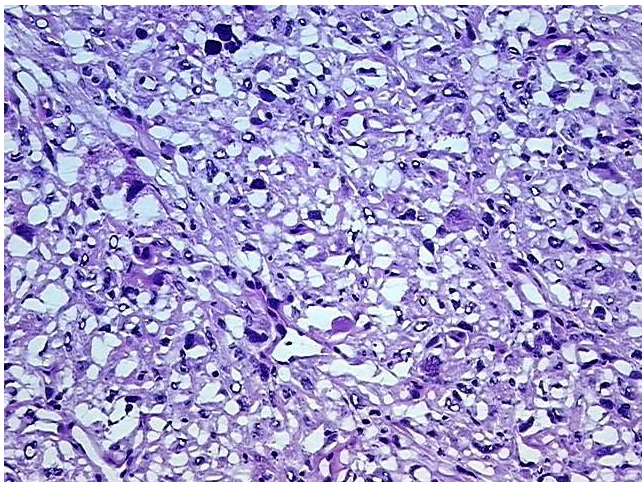
[View online »](#)

Gender:	Female
Race:	White or Caucasian
Tumor Grade:	See pathology report
Minimum Stage Grouping:	II
T (Extent of Primary Tumor):	T1a
N (Lymph node metastasis):	NX
M (Distant metastasis):	MX
Diagnostic Test Results:	Smooth muscle actin ~ SMA ~ Alpha-SMA ! by IHC,Positive; S100 protein,Negative; Desmin ! by IHC,Positive, focal; CD34 ~ HPCA ! by IHC,Negative; MSA ~ Muscle Specific Actin,Positive
Storage:	Store tissue total RNA at -80°C.
Stability:	These products are stable for one year from date of shipping when stored at -80°C without repeated freeze/thaws.

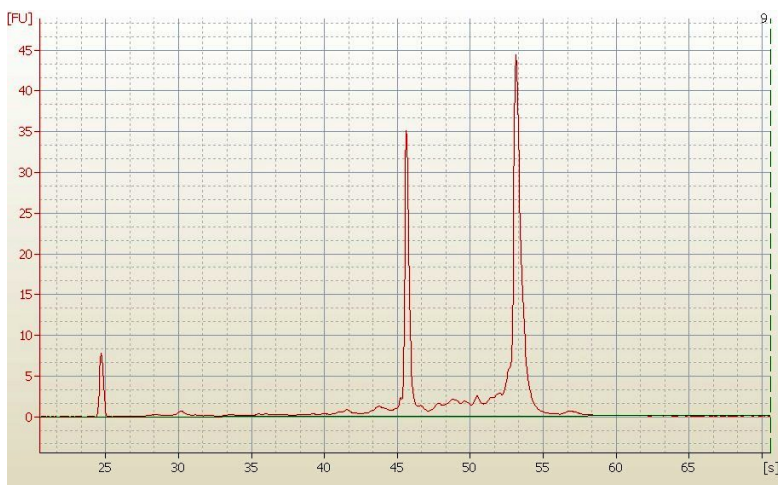
Product images:



4x Image



20x Image



RNA Electropherogram Image



RNA RT-PCR Image