

Product datasheet for **CR560049**

Tissue Total RNA, Lung

Product data:

Product Type:	Total RNA
Disease State:	Cancer
Diagnosis Category:	Lung Cancer
Tissue:	Lung
Frozen Sample ID:	FR5B33B96D
Case ID:	CI0000009502
Prep:	1
Vial ID:	RN00001685
Tissue of Origin:	Lung
Site of Finding:	Lung
Appearance:	Tumor
Sample Diagnosis (from Pathology Verification):	Carcinoma of lung, squamous cell
Normal:	2%
Lesional:	0%
Tumor:	80%
Tumor Hypo/Acellular Stroma:	18%
Tumor Hypercellular Stroma:	0%
Necrosis:	0%
Pathology Verification notes from H&E review:	tumor stroma: focal prominent lymphoplasmacytic infiltrate
Bioanalyzer Ratio (28S/18S):	1.43


[View online »](#)

CASE Diagnosis (from medical center path report): Carcinoma of lung, squamous cell

Age: 79

Gender: Male

Race: White or Caucasian

Tumor Grade: AJCC G2: Moderately differentiated

Minimum Stage Grouping: IB

T (Extent of Primary Tumor): T2

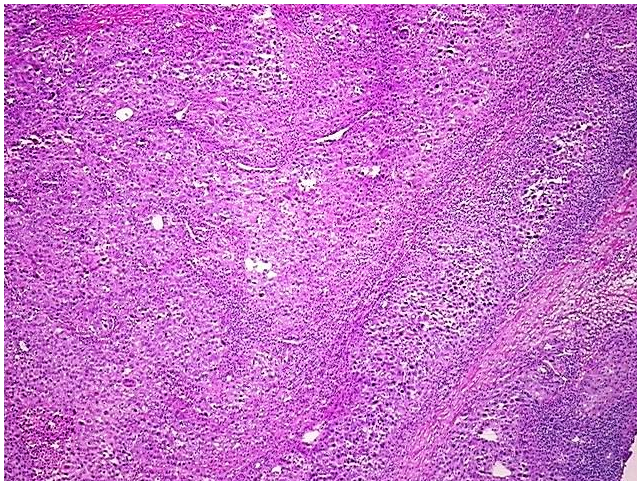
N (Lymph node metastasis): N0

M (Distant metastasis): MX

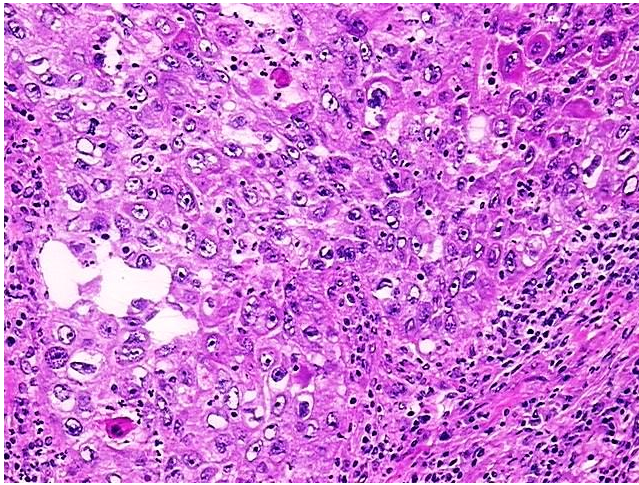
Storage: Store tissue total RNA at -80°C.

Stability: These products are stable for one year from date of shipping when stored at -80°C without repeated freeze/thaws.

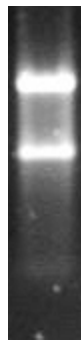
Product images:



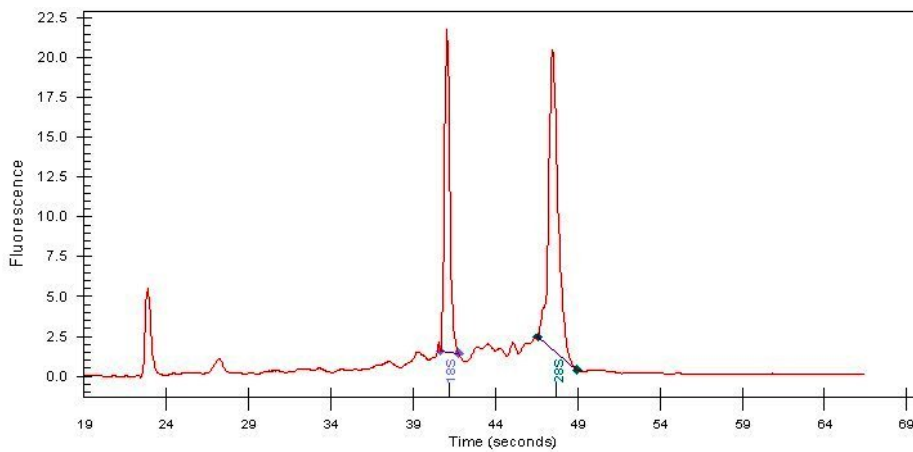
4x Image



20x Image



RNA Gel Image



RNA Electropherogram Image



RNA RT-PCR Image