

Product datasheet for CR560022

Tissue Total RNA, Skin

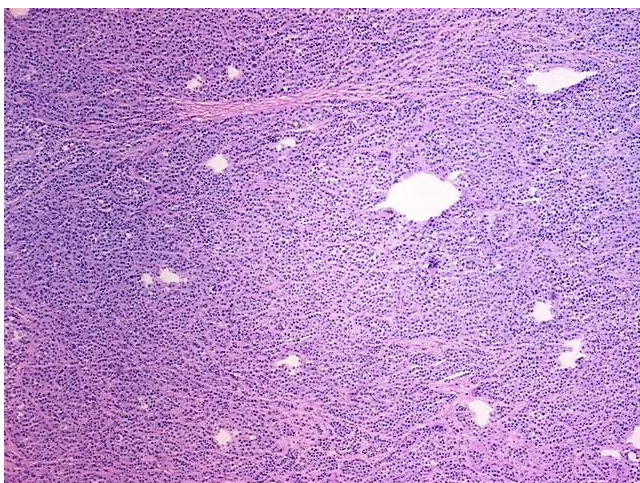
Product data:

Product Type:	Total RNA
Disease State:	Cancer
Diagnosis Category:	Melanoma
Tissue:	Skin
Frozen Sample ID:	FR0002E310
Case ID:	CI0000010709
Prep:	1
Vial ID:	RN00001960
Tissue of Origin:	Skin
Site of Finding:	Lymph node
Appearance:	Tumor
Sample Diagnosis (from Pathology Verification):	Malignant melanoma, metastatic
Normal:	20%
Lesional:	0%
Tumor:	80%
Tumor Hypo/Acellular Stroma:	0%
Tumor Hypercellular Stroma:	0%
Necrosis:	0%
Bioanalyzer Ratio (28S/18S):	1.36
CASE Diagnosis (from medical center path report):	Malignant melanoma, metastatic
Age:	67

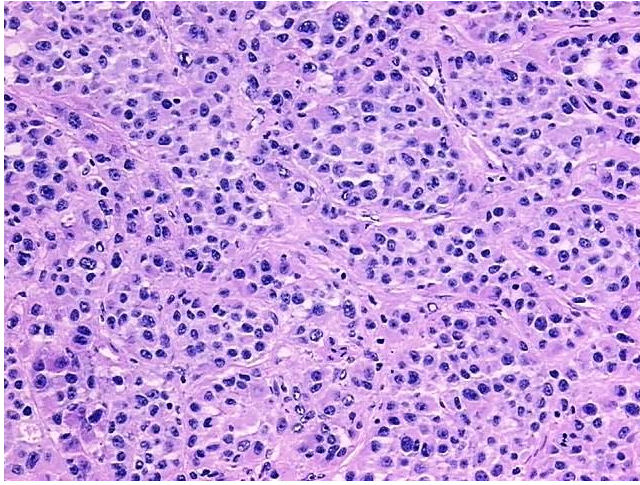


[View online »](#)

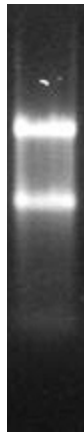
Gender:	Female
Race:	White or Caucasian
Tumor Grade:	Not Reported
Minimum Stage Grouping:	IIIA
T (Extent of Primary Tumor):	TX
N (Lymph node metastasis):	N1
M (Distant metastasis):	MX
Storage:	Store tissue total RNA at -80°C.
Stability:	These products are stable for one year from date of shipping when stored at -80°C without repeated freeze/thaws.

Product images:

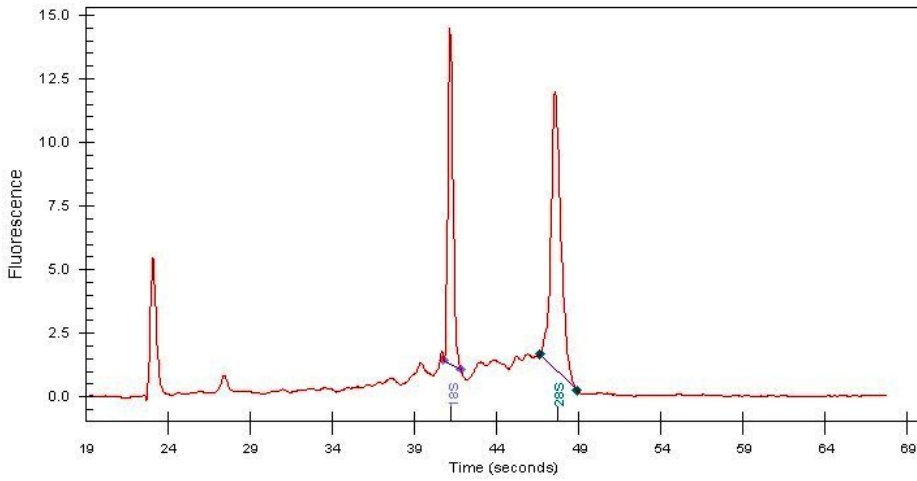
4x Image



20x Image



RNA Gel Image



RNA Electropherogram Image



RNA RT-PCR Image