

## Product datasheet for CR560006

### Tissue Total RNA, Lymphoid tissue

#### Product data:

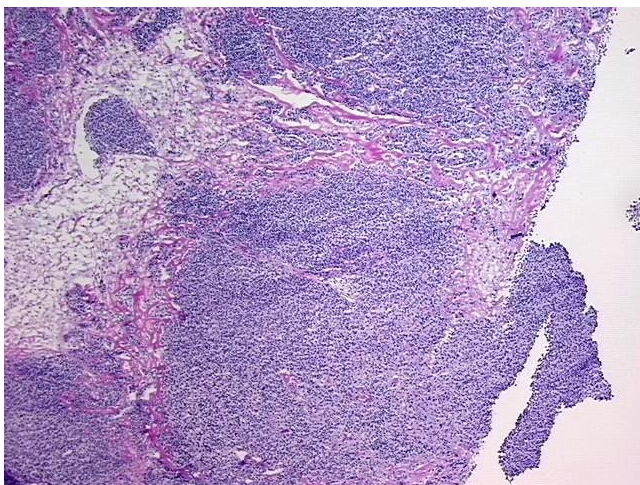
|   |                      |
|---|----------------------|
| Product Type:                                     | Total RNA            |
| Disease State:                                    | Cancer               |
| Diagnosis Category:                               | Lymphoma             |
| Tissue:   | Lymphoid tissue      |
| Frozen Sample ID:                                 | FR000291EC           |
| Case ID:  | CI0000009780         |
| Prep:   | 1                    |
| Vial ID:  | RN00001404           |
| Tissue of Origin:                                 | Lymphoid tissue      |
| Site of Finding:                                  | Omentum              |
| Appearance:                                       | Tumor                |
| Sample Diagnosis (from Pathology Verification):   | Lymphoma, follicular |
| Normal:   | 0%                   |
| Lesional:   | 0%                   |
| Tumor:  | 90%                  |
| Tumor Hypo/Acellular Stroma:                      | 10%                  |
| Tumor Hypercellular Stroma:                       | 0%                   |
| Necrosis:   | 0%                   |
| Bioanalyzer Ratio (28S/18S):                      | 1.42                 |
| CASE Diagnosis (from medical center path report): | Lymphoma, follicular |
| Age:  | 48                   |



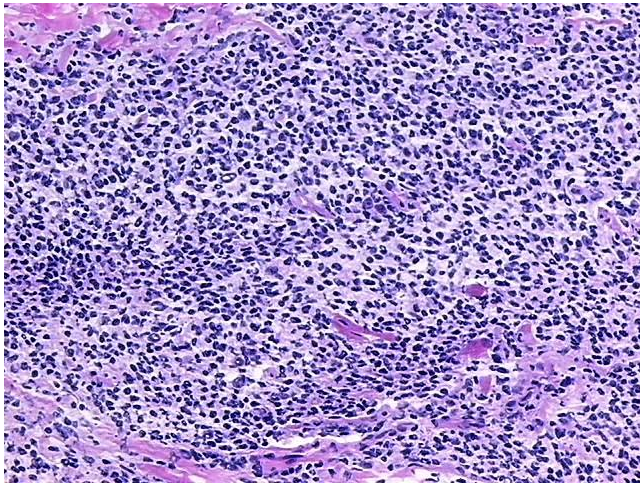
[View online »](#)

|                              |  |
|------------------------------|--|
| Gender:                      | Female   |
| Race:                        | White or Caucasian   |
| Tumor Grade:                 | WHO Grade I  |
| Minimum Stage Grouping:      | II   |
| T (Extent of Primary Tumor): | Not applicable   |
| N (Lymph node metastasis):   | Not applicable   |
| M (Distant metastasis):      | Not applicable   |
| Diagnostic Test Results:     | Lambda light chain ! by FC,Positive, monoclonal; CD19 ~ B4 ~ Leu12 ! by IHC,Positive; CD22 ~ Leu14 ! by IHC,Positive; CD5 ~ Leu1 ! by IHC,Negative; CD10 ~ CALLA ~ Common ALL antigen ! by IHC,Positive; CD23 ~ FceRII ! by IHC,Positive; CD20 ~ |
| Storage:                     | Store tissue total RNA at -80°C.   |
| Stability:                   | These products are stable for one year from date of shipping when stored at -80°C without repeated freeze/thaws.   |

### Product images:



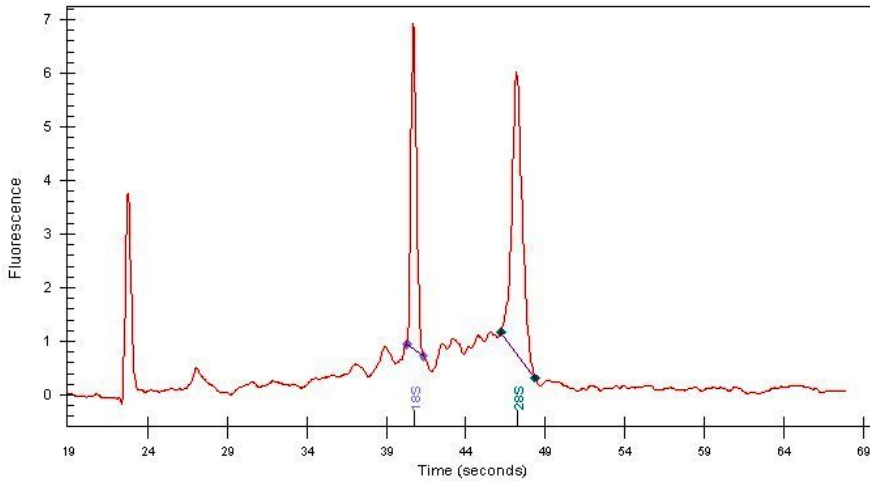
4x Image



20x Image



RNA Gel Image



RNA Electropherogram Image



RNA RT-PCR Image