

Product datasheet for CR559855

Tissue Total RNA, Cervix

Product data:

Product Type:	Total RNA
Disease State:	Cancer
Diagnosis Category:	Cervical Cancer
Tissue:	Cervix
Frozen Sample ID:	FR00020D79
Case ID:	CI0000008095
Prep:	2
Vial ID:	RN00001100
Tissue of Origin:	Cervix
Site of Finding:	Cervix
Appearance:	Tumor
Sample Diagnosis (from Pathology Verification):	Adenocarcinoma of cervix, endometrioid
Normal:	0%
Lesional:	0%
Tumor:	45%
Tumor Hypo/Acellular Stroma:	50%
Tumor Hypercellular Stroma:	0%
Necrosis:	5%
Pathology Verification notes from H&E review:	tumor stroma: prominent mixed lympho-plasmacytic and neutrophilic infiltrate
Bioanalyzer Ratio (28S/18S):	1.47



[View online »](#)

CASE Diagnosis (from medical center path report): Adenocarcinoma of cervix, endometrioid

Age: 35

Gender: Female

Race: White or Caucasian

Tumor Grade: FIGO G1: Well differentiated

Minimum Stage Grouping: IB1

T (Extent of Primary Tumor): T1b1

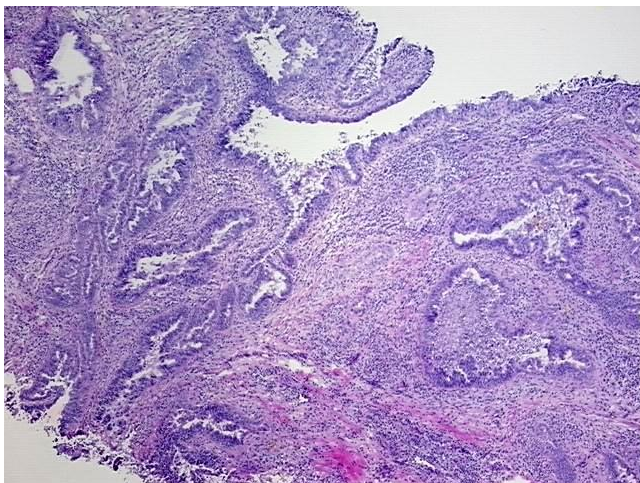
N (Lymph node metastasis): N0

M (Distant metastasis): MX

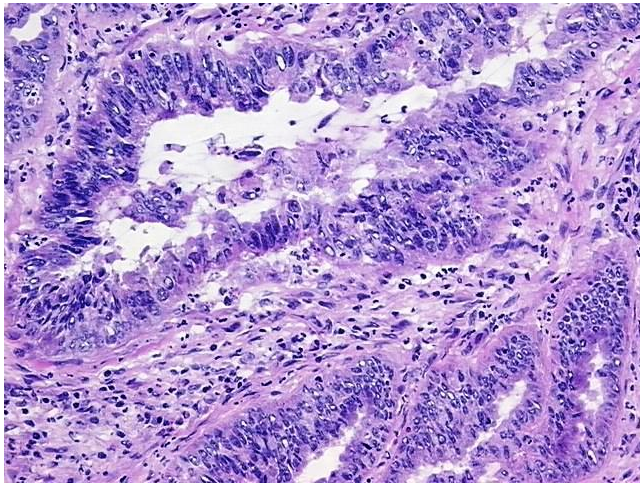
Storage: Store tissue total RNA at -80°C.

Stability: These products are stable for one year from date of shipping when stored at -80°C without repeated freeze/thaws.

Product images:



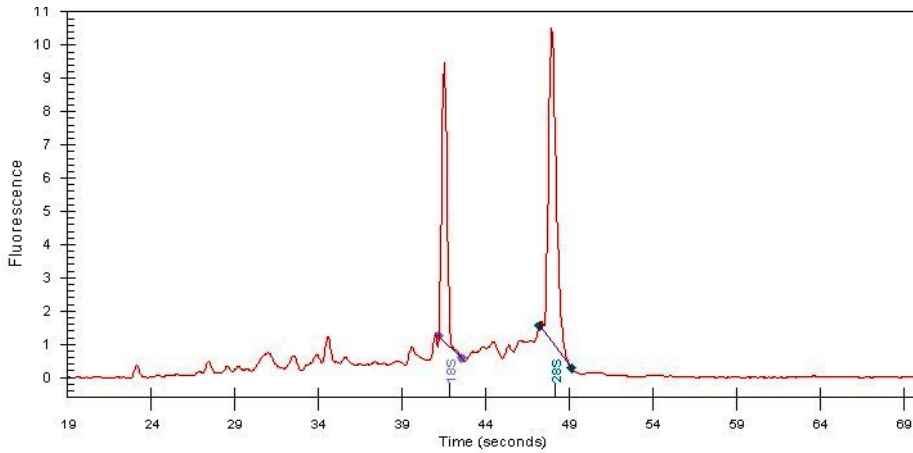
4x Image



20x Image



RNA Gel Image



RNA Electropherogram Image



RNA RT-PCR Image