

Product datasheet for CR559794

Tissue Total RNA, Kidney

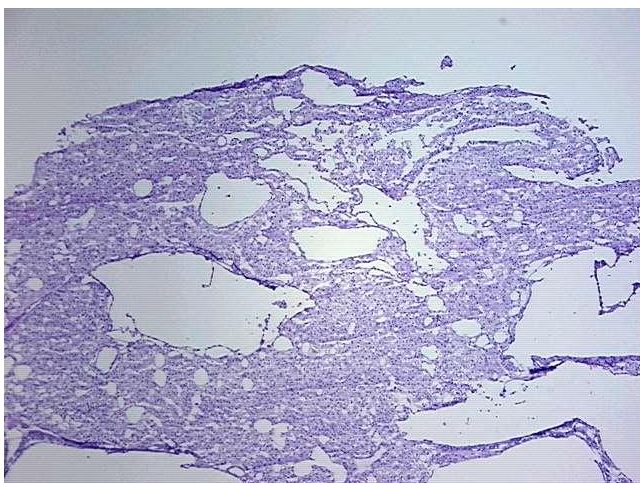
Product data:

Product Type:	Total RNA
Disease State:	Cancer
Diagnosis Category:	Renal Cell Carcinoma
Tissue:	Kidney
Frozen Sample ID:	FR000337DB
Case ID:	CU0000012083
Prep:	3
Vial ID:	RN000034EB
Tissue of Origin:	Kidney
Site of Finding:	Kidney
Appearance:	Tumor
Sample Diagnosis (from Pathology Verification):	Carcinoma of kidney, renal cell, chromophobe
Normal:	0%
Lesional:	0%
Tumor:	98%
Tumor Hypo/Acellular Stroma:	2%
Tumor Hypercellular Stroma:	0%
Necrosis:	0%
Bioanalyzer Ratio (28S/18S):	1.54
CASE Diagnosis (from medical center path report):	Carcinoma of kidney, renal cell, chromophobe
Age:	70

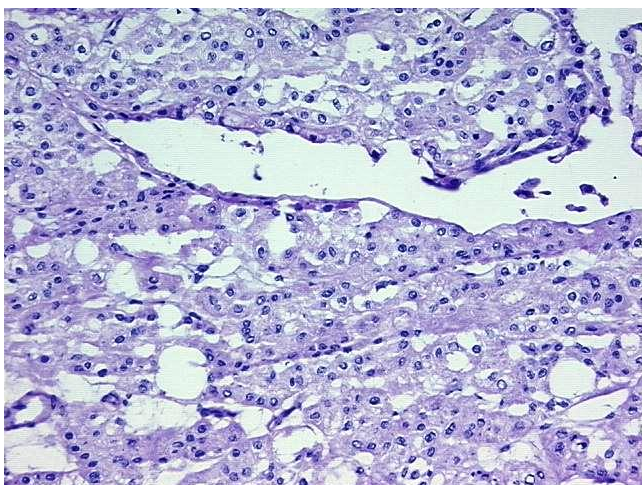


[View online »](#)

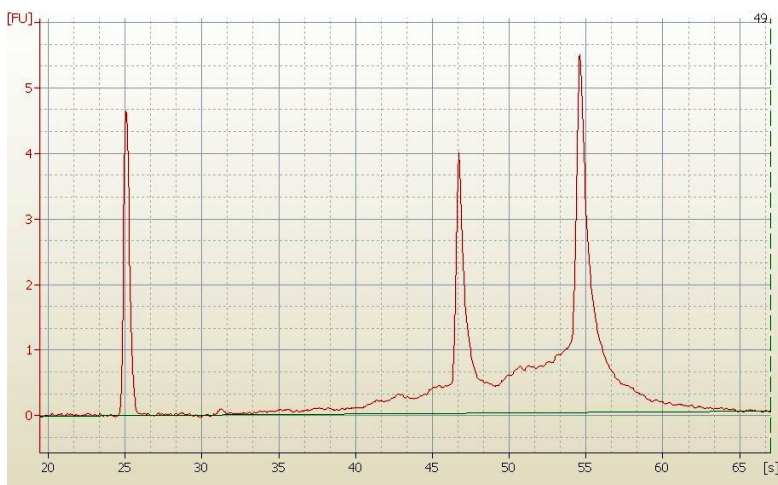
Gender:	Female
Tumor Grade:	Fuhrman G2: Nuclei slightly irregular
Minimum Stage Grouping:	I
T (Extent of Primary Tumor):	T1a
N (Lymph node metastasis):	NX
M (Distant metastasis):	MX
Diagnostic Test Results:	Hale colloidal iron stain, Positive
Storage:	Store tissue total RNA at -80°C.
Stability:	These products are stable for one year from date of shipping when stored at -80°C without repeated freeze/thaws.

Product images:

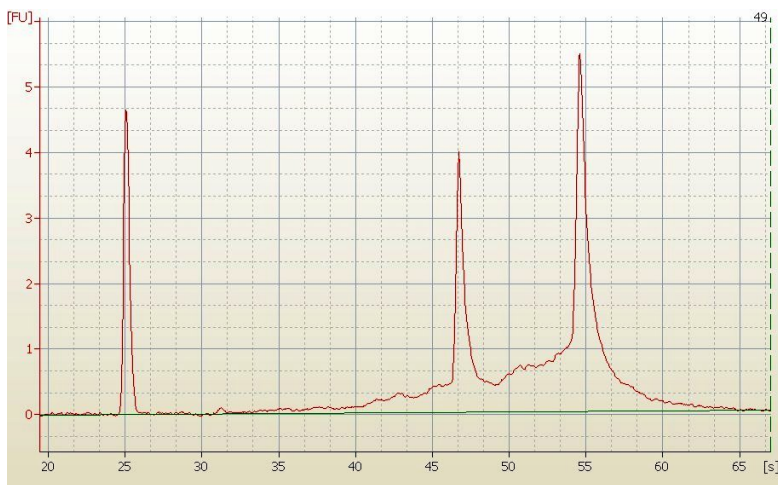
4x Image



20x Image



RNA Electropherogram Image



RNA RT-PCR Image