

## Product datasheet for CR559781

### Tissue Total RNA, Lung

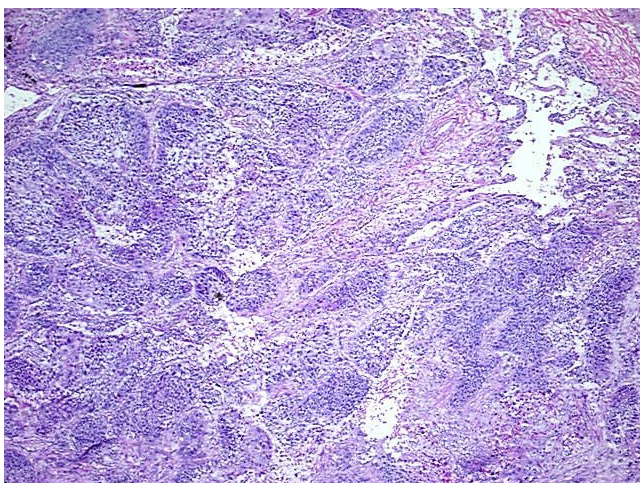
#### Product data:

Product Type:	Total RNA
Disease State:	Cancer
Diagnosis Category:	Lung Cancer
Tissue:	Lung
Frozen Sample ID:	FR0000685F
Case ID:	CI0000000325
Prep:	9
Vial ID:	RN00003753
Tissue of Origin:	Lung
Site of Finding:	Lung
Appearance:	Tumor
Sample Diagnosis (from Pathology Verification):	Carcinoma of lung, squamous cell
Normal:	10%
Lesional:	0%
Tumor:	65%
Tumor Hypo/Acellular Stroma:	15%
Tumor Hypercellular Stroma:	5%
Necrosis:	5%
Bioanalyzer Ratio (28S/18S):	1.83
CASE Diagnosis (from medical center path report):	Carcinoma of lung, squamous cell
Age:	68

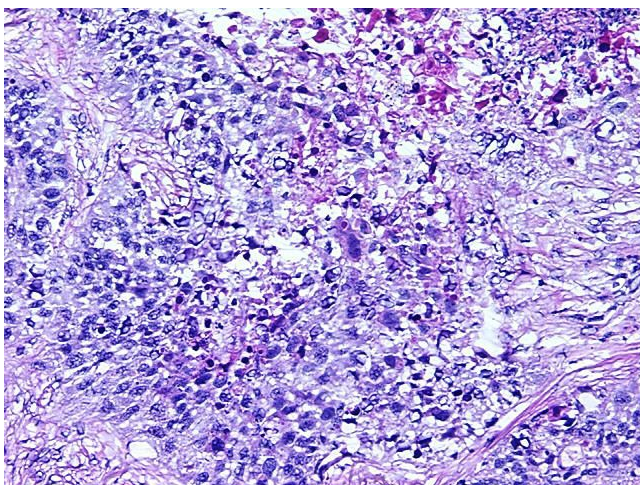


[View online »](#)

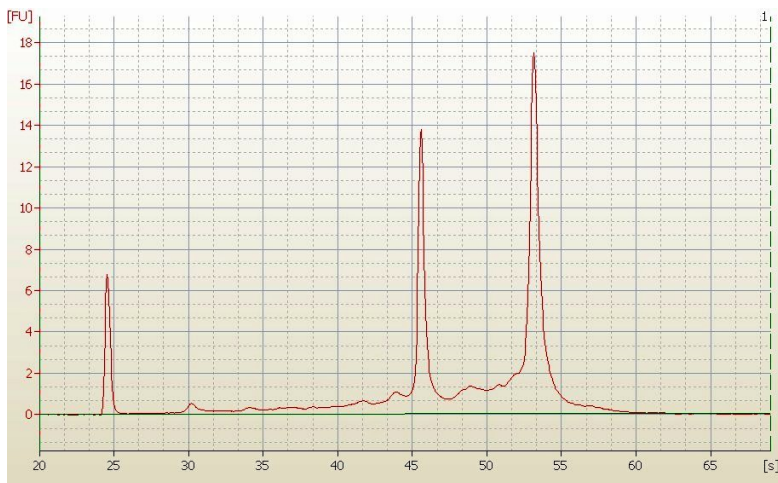
Gender:	Male
Race:	White or Caucasian
Tumor Grade:	AJCC G2: Moderately differentiated
Minimum Stage Grouping:	IB
T (Extent of Primary Tumor):	T2
N (Lymph node metastasis):	N0
M (Distant metastasis):	MX
Storage:	Store tissue total RNA at -80°C.
Stability:	These products are stable for one year from date of shipping when stored at -80°C without repeated freeze/thaws.

**Product images:**

4x Image



20x Image



RNA Electropherogram Image



RNA RT-PCR Image