

Product datasheet for CR559778

Tissue Total RNA, Thyroid gland

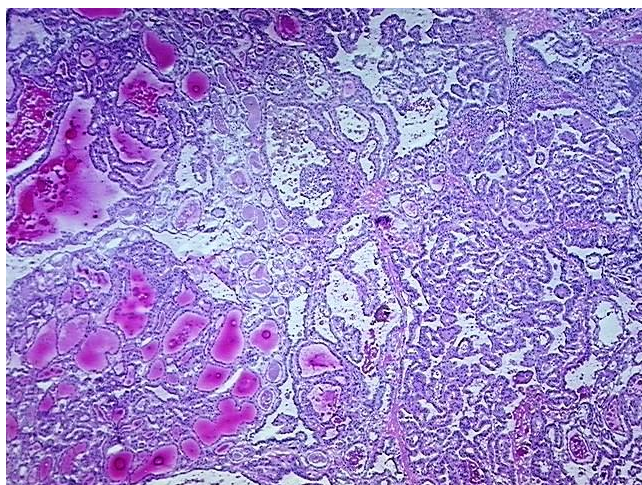
Product data:

| | |
|---|---------------------------------|
| Product Type: | Total RNA |
| Disease State: | Cancer |
| Diagnosis Category: | Thyroid Cancer |
| Tissue: | Thyroid gland |
| Frozen Sample ID: | FR0003ADC7 |
| Case ID: | CU0000014633 |
| Prep: | 1 |
| Vial ID: | RN00002C1F |
| Tissue of Origin: | Thyroid gland |
| Site of Finding: | Thyroid gland |
| Appearance: | Tumor |
| Sample Diagnosis (from Pathology Verification): | Carcinoma of thyroid, papillary |
| Normal: | 5% |
| Lesional: | 0% |
| Tumor: | 90% |
| Tumor Hypo/Acellular Stroma: | 0% |
| Tumor Hypercellular Stroma: | 5% |
| Necrosis: | 0% |
| Bioanalyzer Ratio (28S/18S): | 1.42 |
| CASE Diagnosis (from medical center path report): | Carcinoma of thyroid, papillary |
| Age: | 36 |

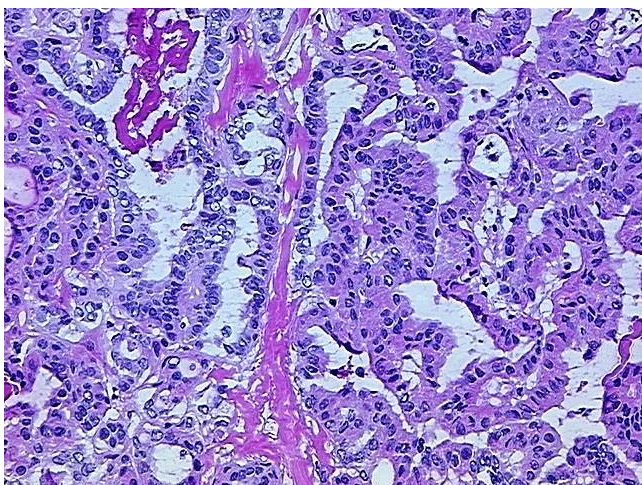


[View online »](#)

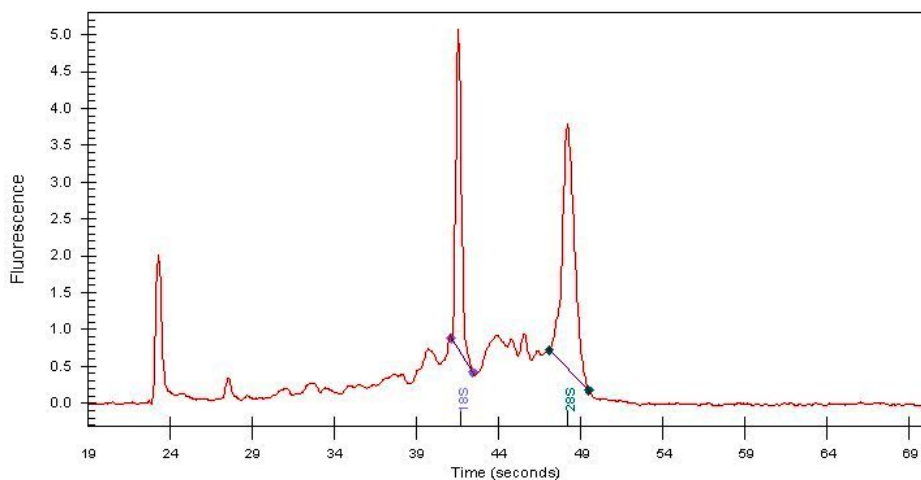
| | |
|------------------------------|--|
| Gender: | Female |
| Tumor Grade: | Not Reported |
| Minimum Stage Grouping: | I |
| T (Extent of Primary Tumor): | T1 |
| N (Lymph node metastasis): | N1a |
| M (Distant metastasis): | MX |
| Storage: | Store tissue total RNA at -80°C. |
| Stability: | These products are stable for one year from date of shipping when stored at -80°C without repeated freeze/thaws. |

Product images:

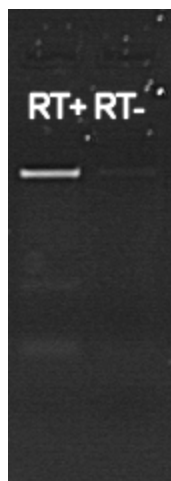
4x Image



20x Image



RNA Electropherogram Image



RNA RT-PCR Image