

## Product datasheet for CR559765

### Tissue Total RNA, Kidney

#### Product data:

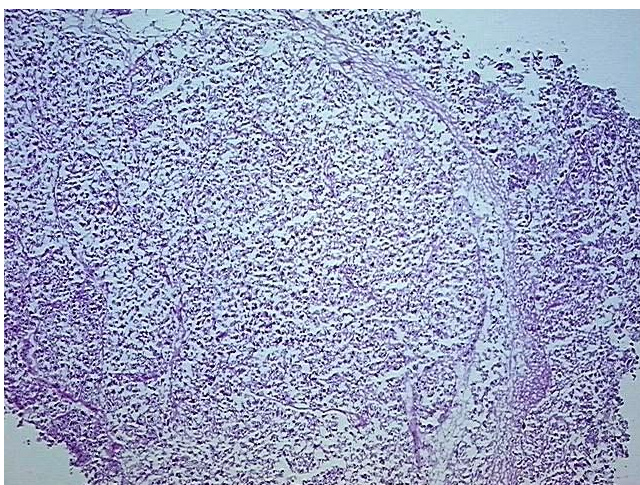
Product Type:	Total RNA
Disease State:	Cancer
Diagnosis Category:	Renal Cell Carcinoma
Tissue:	Kidney
Frozen Sample ID:	FR00030EAD
Case ID:	CU0000012235
Prep:	3
Vial ID:	RN000034CF
Tissue of Origin:	Kidney
Site of Finding:	Kidney
Appearance:	Tumor
Sample Diagnosis (from Pathology Verification):	Carcinoma of kidney, renal cell, clear cell
Normal:	0%
Lesional:	45%
Tumor:	50%
Tumor Hypo/Acellular Stroma:	0%
Tumor Hypercellular Stroma:	0%
Necrosis:	5%
Pathology Verification notes from H&E review:	Lesion (45%): Pyelonephritis, chronic 100%; Inflammation: Moderate Lymphoplasmacytic infiltrate
Bioanalyzer Ratio (28S/18S):	1



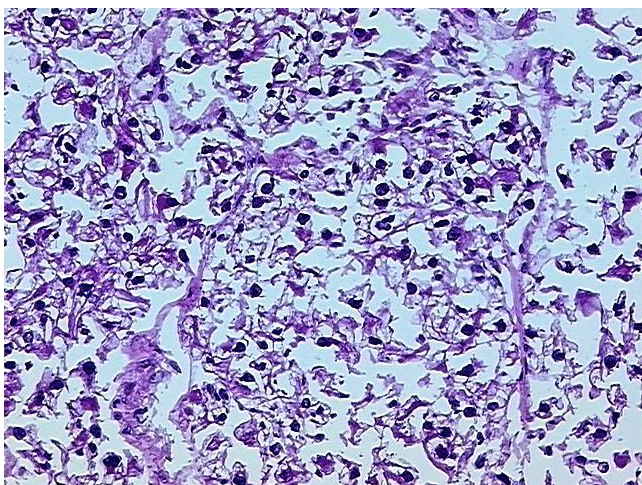
[View online »](#)

<b>CASE Diagnosis (from medical center path report):</b>	Carcinoma of kidney, renal cell, clear cell
<b>Age:</b>	53
<b>Gender:</b>	Male
<b>Tumor Grade:</b>	Fuhrman G3: Nuclei very irregular
<b>Minimum Stage Grouping:</b>	III
<b>T (Extent of Primary Tumor):</b>	T3a
<b>N (Lymph node metastasis):</b>	N0
<b>M (Distant metastasis):</b>	MX
<b>Diagnostic Test Results:</b>	CD227 ~ MUC1 ~ EMA ~ CA15-3 ! by IHC,Negative; Cytokeratin CAM5.2 ~ CAM5.2 ! by IHC,Negative; Cytokeratin AE1/AE3 ~ AE1/AE3 ! by IHC,Negative
<b>Storage:</b>	Store tissue total RNA at -80°C.
<b>Stability:</b>	These products are stable for one year from date of shipping when stored at -80°C without repeated freeze/thaws.

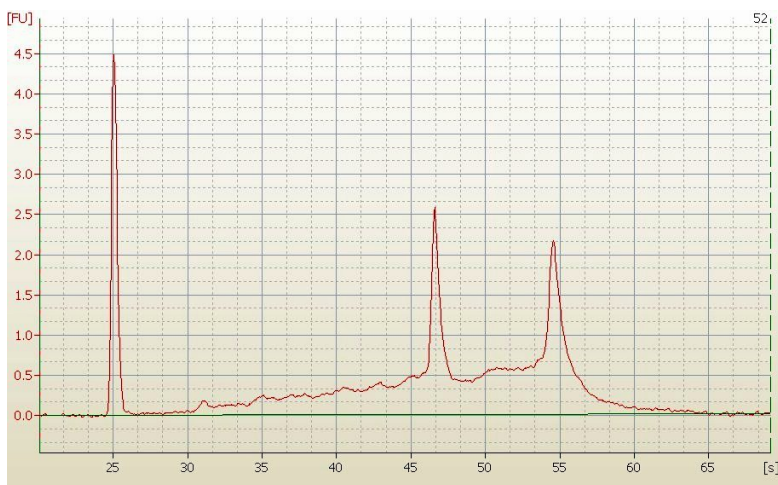
### Product images:



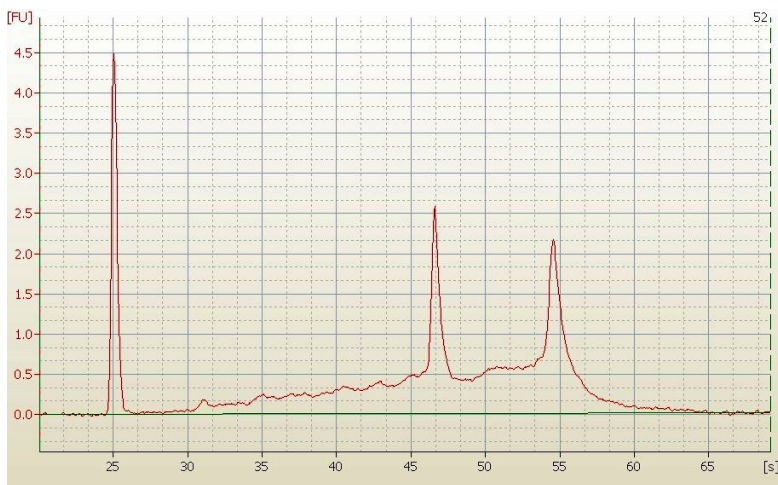
4x Image



20x Image



RNA Electropherogram Image



RNA RT-PCR Image