

Product datasheet for CR559760

Tissue Total RNA, Kidney

Product data:

Product Type:	Total RNA
Disease State:	Cancer
Diagnosis Category:	Renal Cell Carcinoma
Tissue:	Kidney
Frozen Sample ID:	FR5B33F796
Case ID:	CU0000012615
Prep:	3
Vial ID:	RN000034D0
Tissue of Origin:	Kidney
Site of Finding:	Kidney
Appearance:	Tumor
Sample Diagnosis (from Pathology Verification):	Carcinoma of kidney, renal cell, clear cell
Normal:	0%
Lesional:	0%
Tumor:	60%
Tumor Hypo/Acellular Stroma:	0%
Tumor Hypercellular Stroma:	39%
Necrosis:	1%
Pathology Verification notes from H&E review:	Tumor Stroma (Hypo/Acellular): Fibrosis; Inflammation: Mild Lymphoid infiltrate
Bioanalyzer Ratio (28S/18S):	0.96



[View online »](#)

CASE Diagnosis (from medical center path report): Carcinoma of kidney, renal cell, clear cell

Age: 58

Gender: Male

Tumor Grade: Fuhrman G3: Nuclei very irregular

Minimum Stage III

Grouping:

T (Extent of Primary Tumor): T3

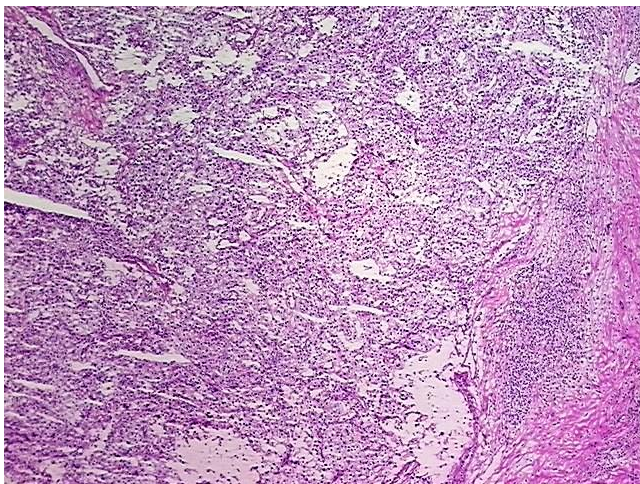
N (Lymph node metastasis): N0

M (Distant metastasis): MX

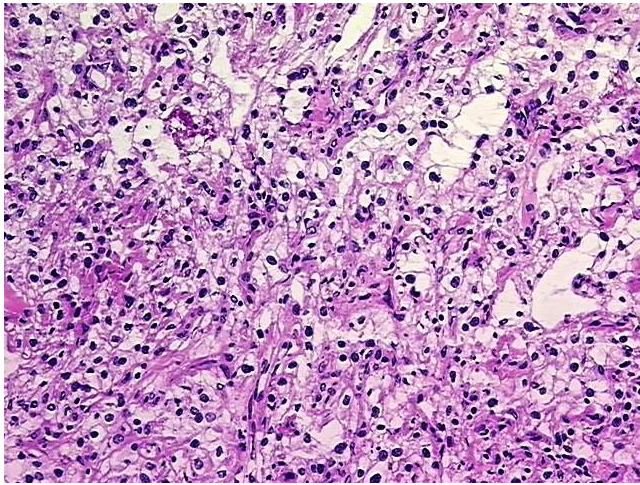
Storage: Store tissue total RNA at -80°C.

Stability: These products are stable for one year from date of shipping when stored at -80°C without repeated freeze/thaws.

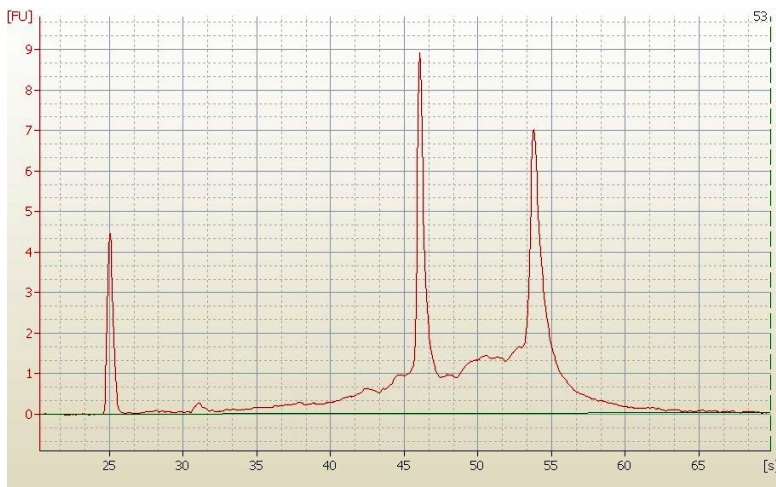
Product images:



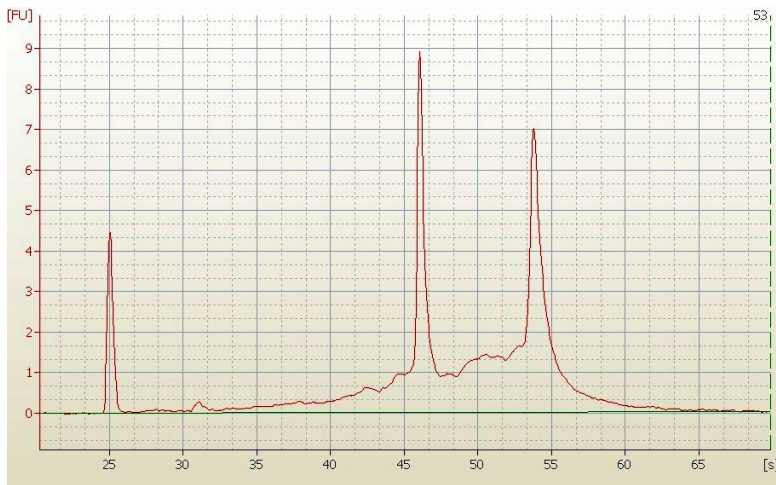
4x Image



20x Image



RNA Electropherogram Image



RNA RT-PCR Image