

## Product datasheet for CR559754

### Tissue Total RNA, Soft tissue

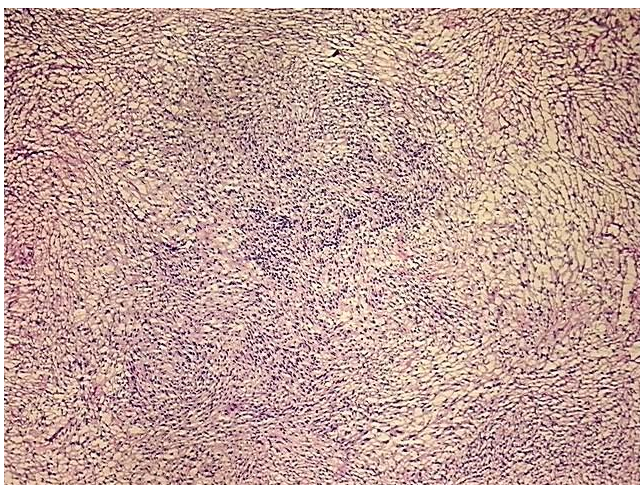
#### Product data:

Product Type:	Total RNA
Disease State:	Cancer
Diagnosis Category:	Sarcoma
Tissue:	Soft tissue
Frozen Sample ID:	FR000385D5
Case ID:	CU0000012639
Prep:	1
Vial ID:	RN00003B9B
Tissue of Origin:	Soft tissue
Site of Finding:	Leg
Appearance:	Tumor
Sample Diagnosis (from Pathology Verification):	Sarcoma, spindle cell, recurrent
Normal:	0%
Lesional:	0%
Tumor:	50%
Tumor Hypo/Acellular Stroma:	30%
Tumor Hypercellular Stroma:	0%
Necrosis:	20%
Bioanalyzer Ratio (28S/18S):	1.48
CASE Diagnosis (from medical center path report):	Sarcoma, spindle cell, recurrent
Age:	62

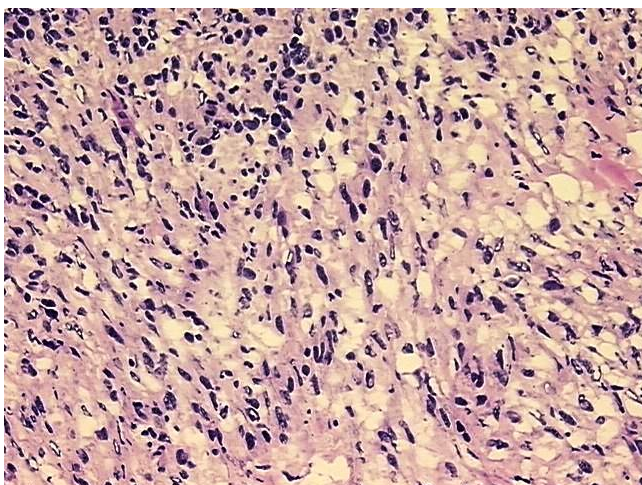


[View online »](#)

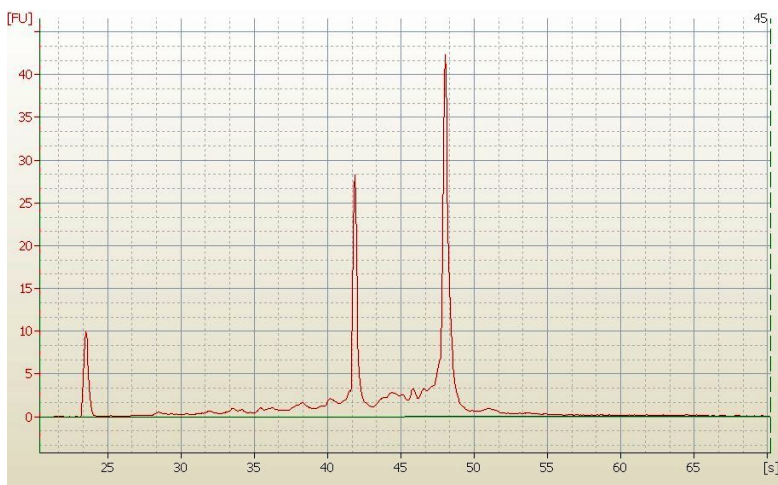
Gender:	Female
Tumor Grade:	AJCC G3-4: Poorly differentiated or undifferentiated
Minimum Stage Grouping:	IV
T (Extent of Primary Tumor):	T2b
N (Lymph node metastasis):	NX
M (Distant metastasis):	M1
Storage:	Store tissue total RNA at -80°C.
Stability:	These products are stable for one year from date of shipping when stored at -80°C without repeated freeze/thaws.

**Product images:**

4x Image



20x Image



RNA Electropherogram Image



RNA RT-PCR Image