

Product datasheet for CR559707

Tissue Total RNA, Kidney

Product data:

Product Type:	Total RNA
Disease State:	Cancer
Diagnosis Category:	Renal Cell Carcinoma
Tissue:	Kidney
Frozen Sample ID:	FR00002188
Case ID:	CI0000000043
Prep:	6
Vial ID:	RN00000DD4
Tissue of Origin:	Kidney
Site of Finding:	Lung
Appearance:	Tumor
Sample Diagnosis (from Pathology Verification):	Carcinoma of kidney, renal cell, metastatic
Normal:	0%
Lesional:	0%
Tumor:	90%
Tumor Hypo/Acellular Stroma:	10%
Tumor Hypercellular Stroma:	0%
Necrosis:	0%
Pathology Verification notes from H&E review:	Renal cell tumor metastasized to lung; Contains prominent stromal chronic inflammatory infiltrate
Bioanalyzer Ratio (28S/18S):	1.27



[View online »](#)

CASE Diagnosis (from medical center path report): Carcinoma of kidney, renal cell, metastatic

Age: 45

Gender: Male

Race: White or Caucasian

Tumor Grade: Not Reported

Minimum Stage Grouping: IV

T (Extent of Primary Tumor): TX

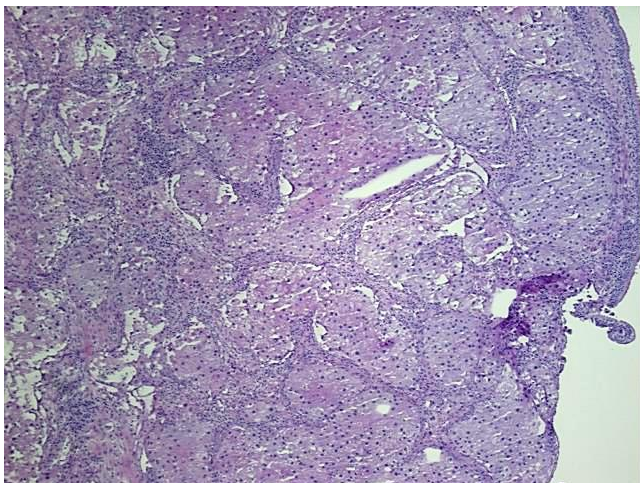
N (Lymph node metastasis): N0

M (Distant metastasis): M1

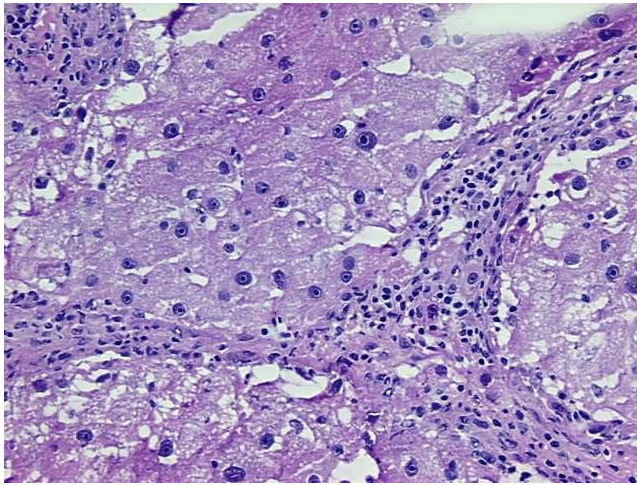
Storage: Store tissue total RNA at -80°C.

Stability: These products are stable for one year from date of shipping when stored at -80°C without repeated freeze/thaws.

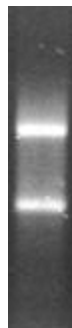
Product images:



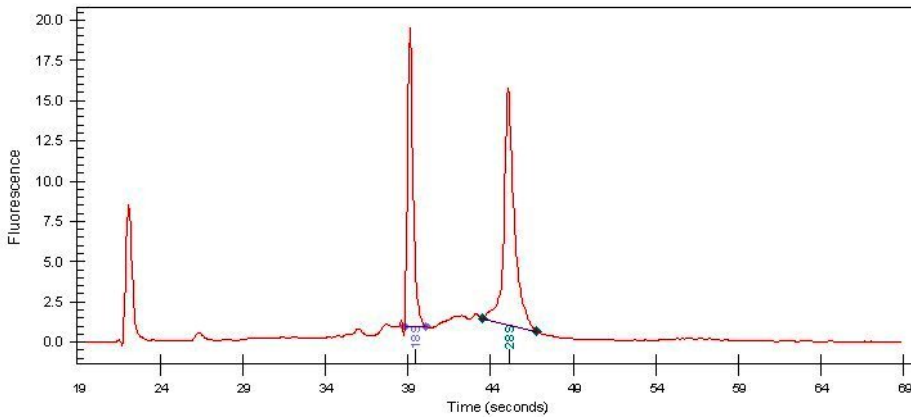
4x Image



20x Image



RNA Gel Image



RNA Electropherogram Image



RNA RT-PCR Image