

Product datasheet for CR559659

Tissue Total RNA, Kidney

Product data:

| | |
|---|---|
| Product Type: | Total RNA |
| Disease State: | Cancer |
| Diagnosis Category: | Renal Cell Carcinoma |
| Tissue: | Kidney |
| Frozen Sample ID: | FR0001703D |
| Case ID: | CI0000005050 |
| Prep: | 1 |
| Vial ID: | RN00003731 |
| Tissue of Origin: | Kidney |
| Site of Finding: | Adrenal gland |
| Appearance: | Tumor |
| Sample Diagnosis (from Pathology Verification): | Carcinoma of kidney, renal cell, metastatic |
| Normal: | 0% |
| Lesional: | 0% |
| Tumor: | 98% |
| Tumor Hypo/Acellular Stroma: | 2% |
| Tumor Hypercellular Stroma: | 0% |
| Necrosis: | 0% |
| Bioanalyzer Ratio (28S/18S): | 1.72 |
| CASE Diagnosis (from medical center path report): | Carcinoma of kidney, renal cell, metastatic |
| Age: | 73 |



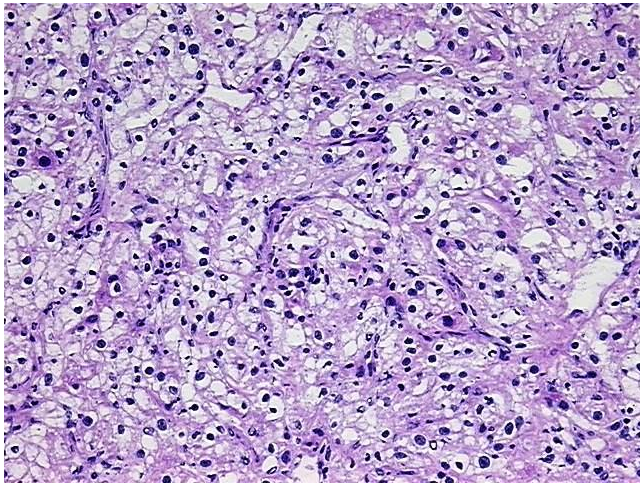
[View online »](#)

| | |
|------------------------------|---|
| Gender: | Female |
| Race: | White or Caucasian |
| Tumor Grade: | Not Reported |
| Minimum Stage Grouping: | III |
| T (Extent of Primary Tumor): | T3a |
| N (Lymph node metastasis): | NX |
| M (Distant metastasis): | MX |
| Diagnostic Test Results: | CD227 ~ MUC1 ~ EMA ~ CA15-3 ! by IHC,Positive; Cytokeratin (Pan) ~ Keratin, Pan ! by IHC,Positive; Vimentin ~ VIM ! by IHC,Negative; Inhibin,Negative |
| Storage: | Store tissue total RNA at -80°C. |
| Stability: | These products are stable for one year from date of shipping when stored at -80°C without repeated freeze/thaws. |

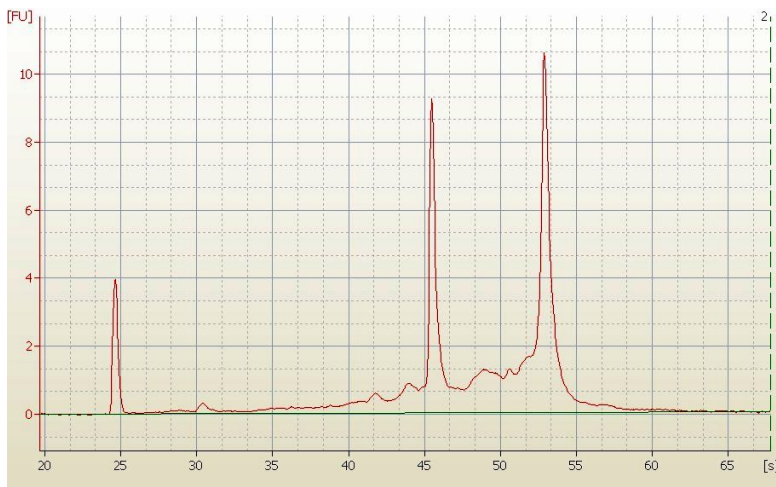
Product images:



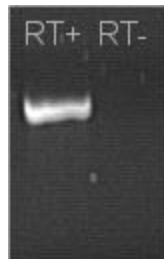
4x Image



20x Image



RNA Electropherogram Image



RNA RT-PCR Image