

## Product datasheet for CR559613

### Tissue Total RNA, Soft tissue

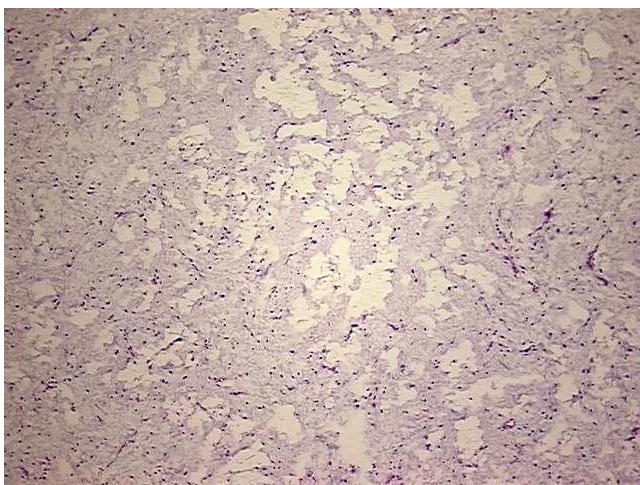
#### Product data:

Product Type:	Total RNA
Disease State:	Cancer
Diagnosis Category:	Sarcoma
Tissue:	Soft tissue
Frozen Sample ID:	FR00025573
Case ID:	CU0000006754
Prep:	2
Vial ID:	RN00003C3A
Tissue of Origin:	Soft tissue
Site of Finding:	Leg
Appearance:	Tumor
Sample Diagnosis (from Pathology Verification):	Liposarcoma
Normal:	0%
Lesional:	0%
Tumor:	95%
Tumor Hypo/Acellular Stroma:	5%
Tumor Hypercellular Stroma:	0%
Necrosis:	0%
Bioanalyzer Ratio (28S/18S):	1.35
CASE Diagnosis (from medical center path report):	Liposarcoma
Age:	47

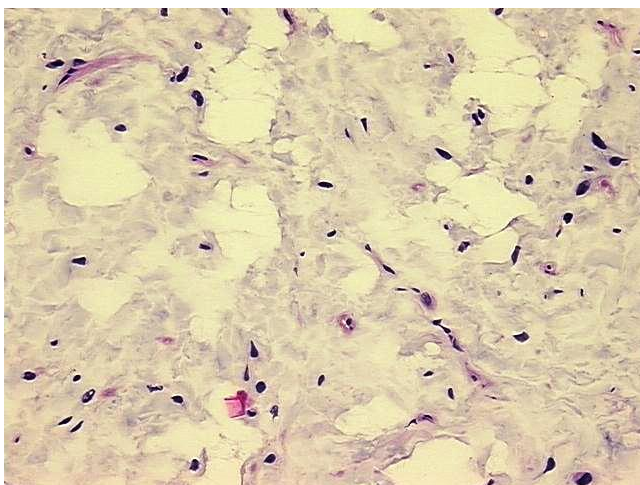

[View online »](#)

<b>Gender:</b>	Female
<b>Tumor Grade:</b>	AJCC G1: Well differentiated
<b>Minimum Stage Grouping:</b>	I
<b>T (Extent of Primary Tumor):</b>	T1a
<b>N (Lymph node metastasis):</b>	NX
<b>M (Distant metastasis):</b>	MX
<b>Storage:</b>	Store tissue total RNA at -80°C.
<b>Stability:</b>	These products are stable for one year from date of shipping when stored at -80°C without repeated freeze/thaws.

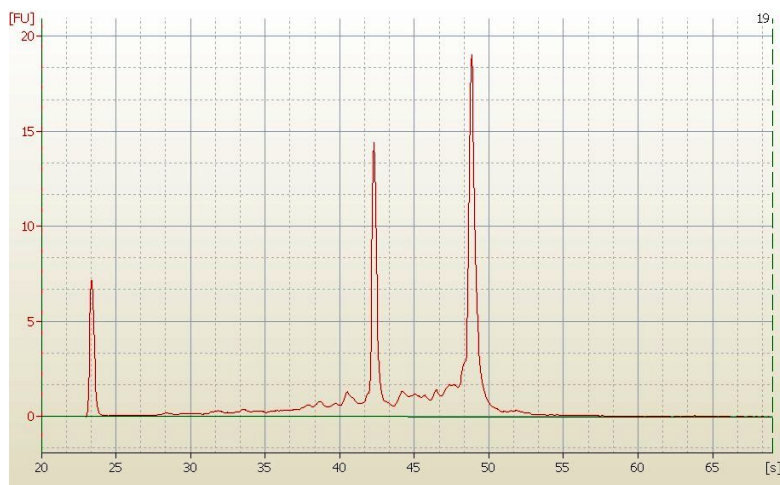
### Product images:



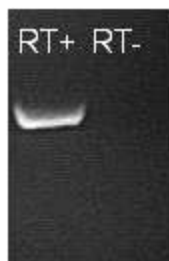
4x Image



20x Image



RNA Electropherogram Image



RNA RT-PCR Image