

Product datasheet for CR559536

Tissue Total RNA, Soft tissue

Product data:

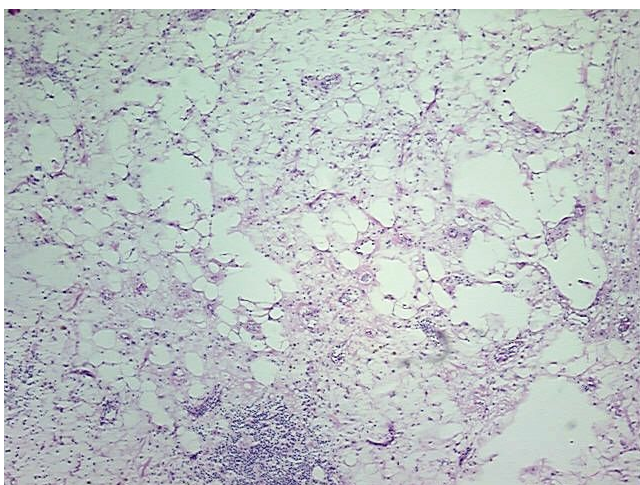
Product Type:	Total RNA
Disease State:	Cancer
Diagnosis Category:	Sarcoma
Tissue:	Soft tissue
Frozen Sample ID:	FR00001234
Case ID:	CU0000000511
Prep:	3
Vial ID:	RN00003C3C
Tissue of Origin:	Soft tissue
Site of Finding:	Spermatic cord
Appearance:	Tumor
Sample Diagnosis (from Pathology Verification):	Liposarcoma
Normal:	0%
Lesional:	0%
Tumor:	50%
Tumor Hypo/Acellular Stroma:	30%
Tumor Hypercellular Stroma:	20%
Necrosis:	0%
Pathology Verification notes from H&E review:	Myxoid and well differentiated
Bioanalyzer Ratio (28S/18S):	1.62



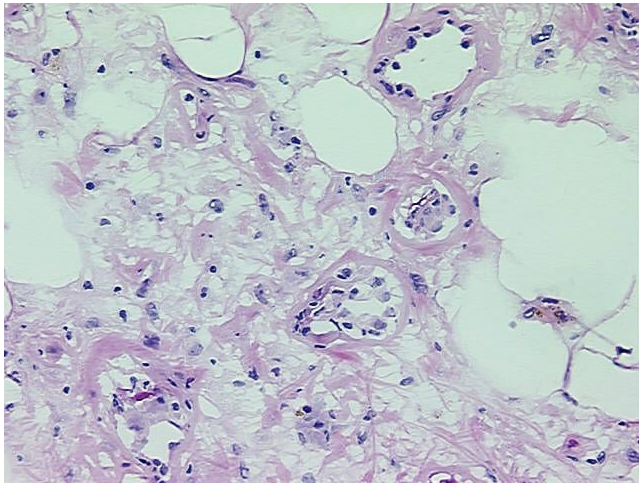
[View online »](#)

CASE Diagnosis (from medical center path report):	Liposarcoma
Age:	56
Gender:	Male
Tumor Grade:	AJCC G1: Well differentiated
Minimum Stage Grouping:	I
T (Extent of Primary Tumor):	T2b
N (Lymph node metastasis):	NX
M (Distant metastasis):	MX
Storage:	Store tissue total RNA at -80°C.
Stability:	These products are stable for one year from date of shipping when stored at -80°C without repeated freeze/thaws.

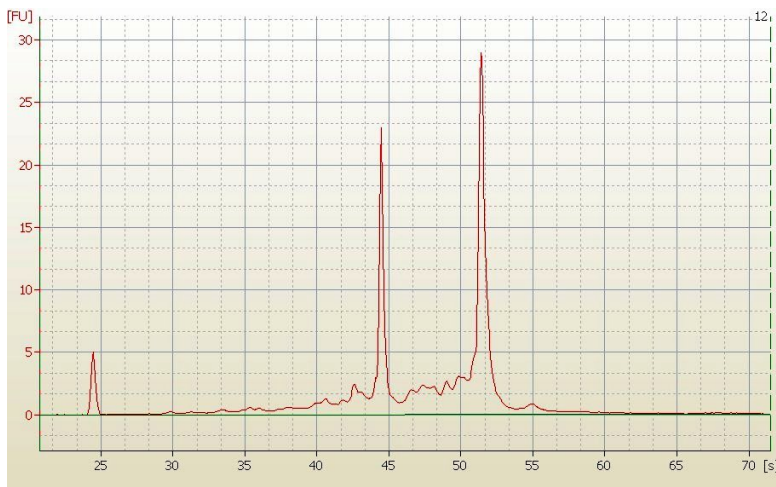
Product images:



4x Image



20x Image



RNA Electropherogram Image



RNA RT-PCR Image