

## Product datasheet for CR559510

### Tissue Total RNA, Kidney

#### Product data:

Product Type:	Total RNA
Disease State:	Cancer
Diagnosis Category:	Renal Cell Carcinoma
Tissue:	Kidney
Frozen Sample ID:	FR0002A5E5
Case ID:	CI0000008805
Prep:	2
Vial ID:	RN00003502
Tissue of Origin:	Kidney
Site of Finding:	Kidney
Appearance:	Tumor
Sample Diagnosis (from Pathology Verification):	Carcinoma of kidney, renal cell, clear cell
Normal:	0%
Lesional:	0%
Tumor:	70%
Tumor Hypo/Acellular Stroma:	0%
Tumor Hypercellular Stroma:	30%
Necrosis:	0%
Pathology Verification notes from H&E review:	hypocellular stroma: 30% fibrosis, 70% edema fluid
Bioanalyzer Ratio (28S/18S):	1.33



[View online »](#)

**CASE Diagnosis (from medical center path report):** Carcinoma of kidney, renal cell, clear cell

**Age:** 44

**Gender:** Female

**Race:** White or Caucasian

**Tumor Grade:** Fuhrman G3: Nuclei very irregular

**Minimum Stage Grouping:** III

**T (Extent of Primary Tumor):** T3

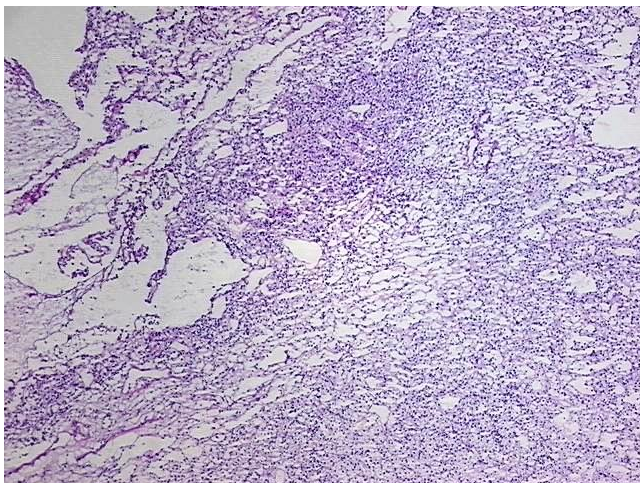
**N (Lymph node metastasis):** NX

**M (Distant metastasis):** MX

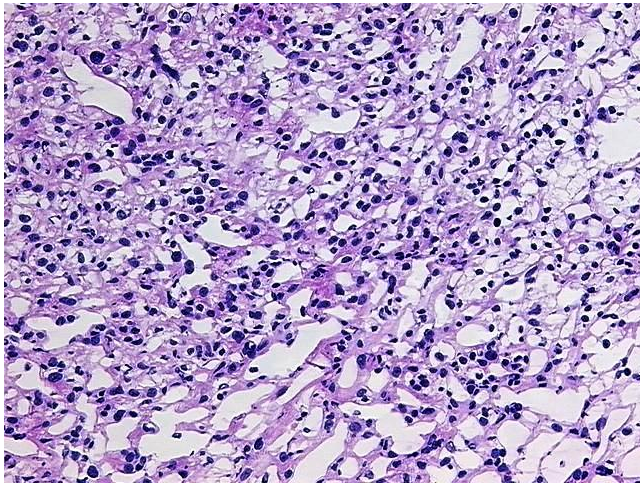
**Storage:** Store tissue total RNA at -80°C.

**Stability:** These products are stable for one year from date of shipping when stored at -80°C without repeated freeze/thaws.

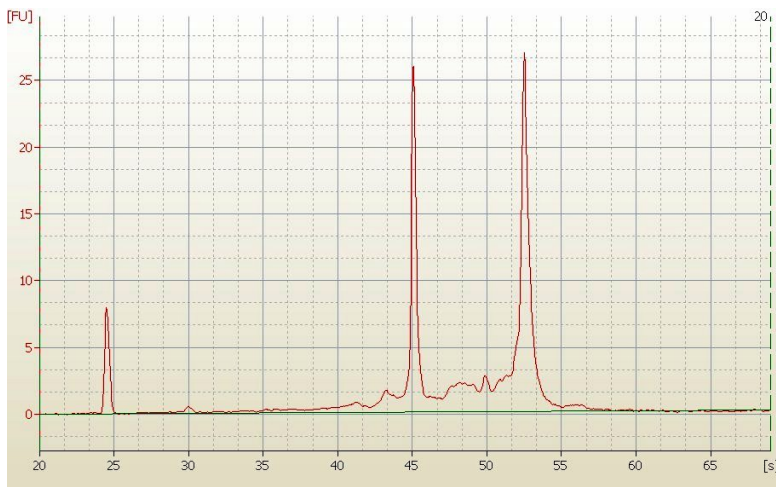
### Product images:



4x Image



20x Image



RNA Electropherogram Image



RNA RT-PCR Image