

Product datasheet for CR559449

Tissue Total RNA, Cartilage

Product data:

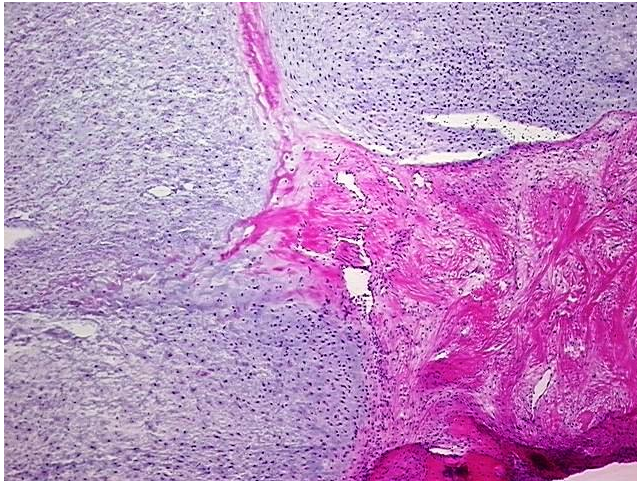
Product Type:	Total RNA
Disease State:	Cancer
Diagnosis Category:	Sarcoma
Tissue:	Cartilage
Frozen Sample ID:	FR00041898
Case ID:	CI0000019265
Prep:	2
Vial ID:	RN00003B86
Tissue of Origin:	Cartilage
Site of Finding:	Chest wall
Appearance:	Tumor
Sample Diagnosis (from Pathology Verification):	Chondrosarcoma, recurrent
Normal:	45%
Lesional:	0%
Tumor:	55%
Tumor Hypo/Acellular Stroma:	0%
Tumor Hypercellular Stroma:	0%
Necrosis:	0%
Pathology Verification notes from H&E review:	Non Tumor Structures: 40% Bone, 60% fascia
Bioanalyzer Ratio (28S/18S):	1.43



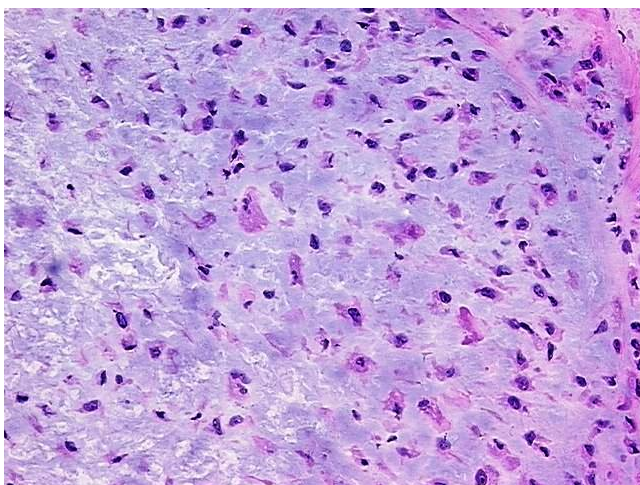
[View online »](#)

CASE Diagnosis (from medical center path report):	Chondrosarcoma, recurrent
Age:	48
Gender:	Female
Race:	White or Caucasian
Tumor Grade:	AJCC G3: Poorly differentiated
Minimum Stage Grouping:	IIB
T (Extent of Primary Tumor):	T2
N (Lymph node metastasis):	NX
M (Distant metastasis):	MX
Storage:	Store tissue total RNA at -80°C.
Stability:	These products are stable for one year from date of shipping when stored at -80°C without repeated freeze/thaws.

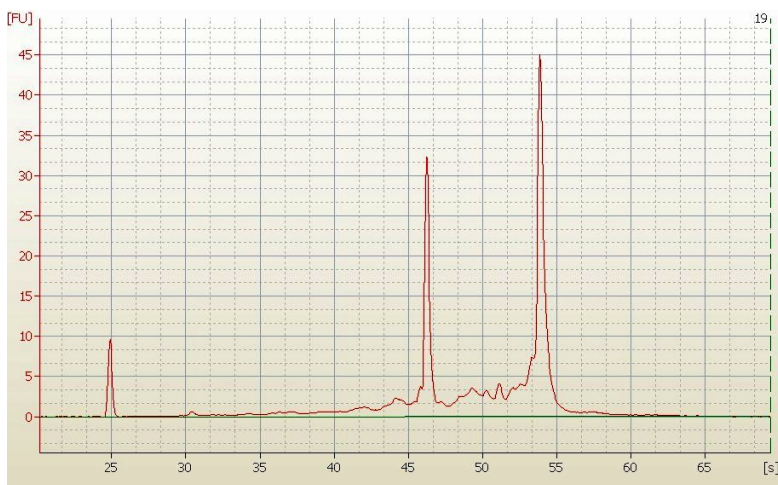
Product images:



4x Image



20x Image



RNA Electropherogram Image



RNA RT-PCR Image