

Product datasheet for CR559448

Tissue Total RNA, Cartilage

Product data:

Product Type:	Total RNA
Disease State:	Cancer
Diagnosis Category:	Sarcoma
Tissue:	Cartilage
Frozen Sample ID:	FR00041895
Case ID:	CI0000019265
Prep:	1
Vial ID:	RN00003251
Tissue of Origin:	Cartilage
Site of Finding:	Chest wall
Appearance:	Tumor
Sample Diagnosis (from Pathology Verification):	Chondrosarcoma, recurrent
Normal:	0%
Lesional:	0%
Tumor:	75%
Tumor Hypo/Acellular Stroma:	0%
Tumor Hypercellular Stroma:	10%
Necrosis:	15%
Pathology Verification notes from H&E review:	Tumor Stroma (Hypo/Acellular): Fibrosis
Bioanalyzer Ratio (28S/18S):	0.99



[View online »](#)

CASE Diagnosis (from medical center path report): Chondrosarcoma, recurrent

Age: 48

Gender: Female

Race: White or Caucasian

Tumor Grade: AJCC G3: Poorly differentiated

Minimum Stage Grouping: IIB

T (Extent of Primary Tumor): T2

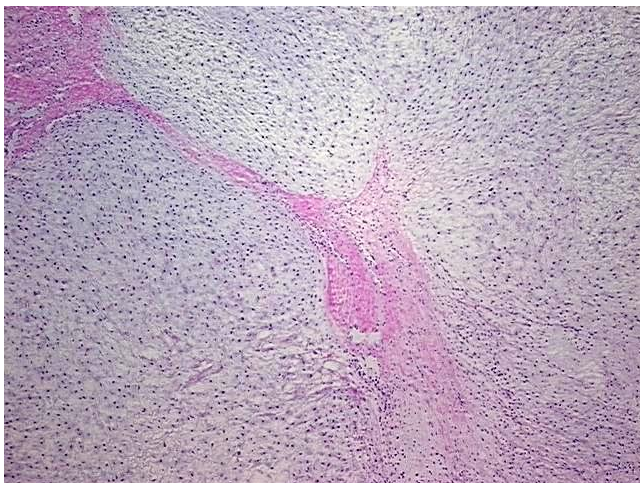
N (Lymph node metastasis): NX

M (Distant metastasis): MX

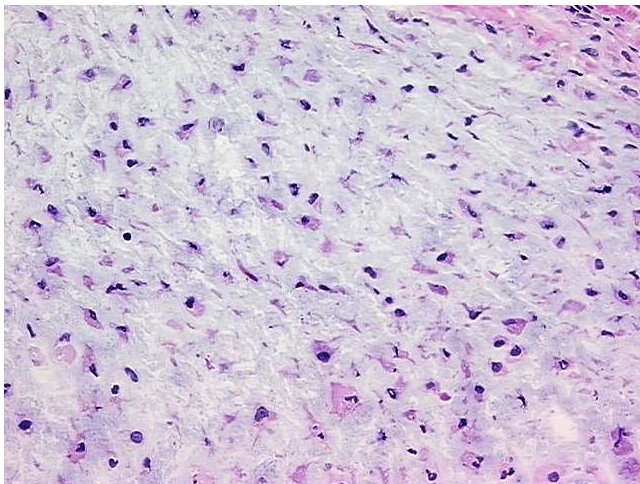
Storage: Store tissue total RNA at -80°C.

Stability: These products are stable for one year from date of shipping when stored at -80°C without repeated freeze/thaws.

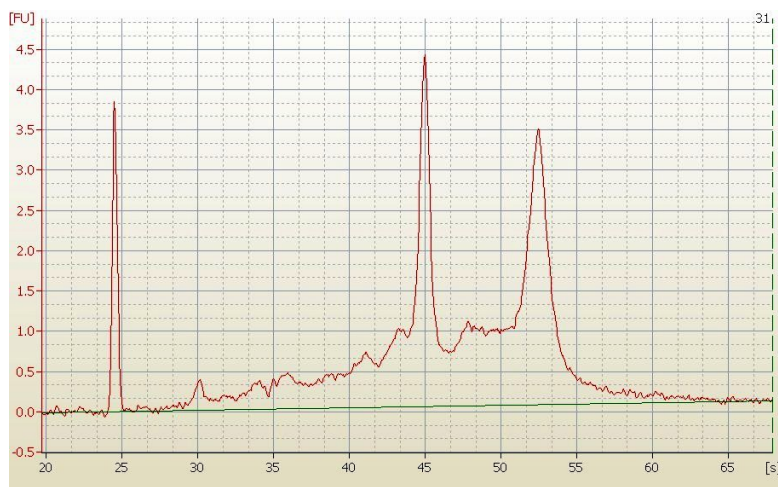
Product images:



4x Image



20x Image



RNA Electropherogram Image