

Product datasheet for CR559396

Tissue Total RNA, Urinary bladder

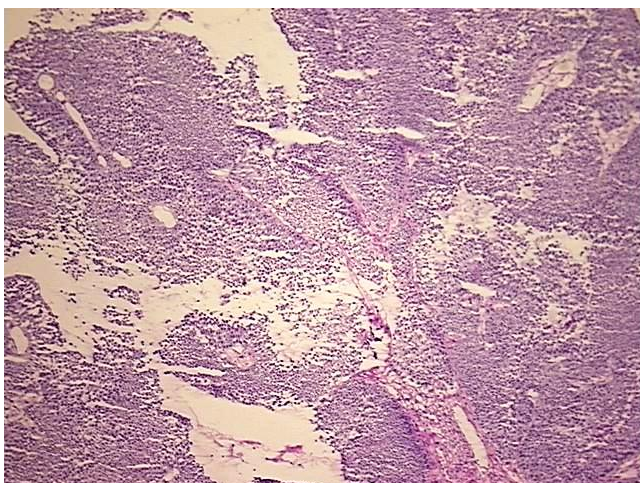
Product data:

Product Type:	Total RNA
Disease State:	Cancer
Diagnosis Category:	Bladder Cancer
Tissue:	Urinary bladder
Frozen Sample ID:	FR0003A5AF
Case ID:	CI0000015721
Prep:	1
Vial ID:	RN000032CE
Tissue of Origin:	Urinary bladder
Site of Finding:	Urinary bladder
Appearance:	Tumor
Sample Diagnosis (from Pathology Verification):	Carcinoma of bladder, papillary transitional cell
Normal:	0%
Lesional:	0%
Tumor:	80%
Tumor Hypo/Acellular Stroma:	20%
Tumor Hypercellular Stroma:	0%
Necrosis:	0%
Bioanalyzer Ratio (28S/18S):	1.53
CASE Diagnosis (from medical center path report):	Carcinoma of bladder, papillary transitional cell
Age:	69

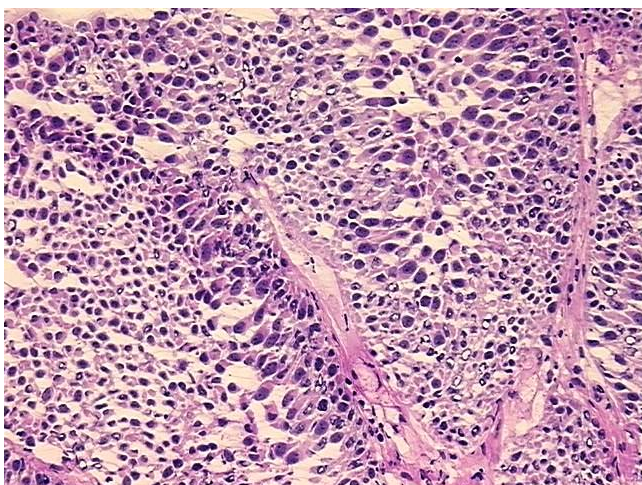


[View online »](#)

Gender:	Female
Race:	Black or African American
Tumor Grade:	AJCC G2: Moderately differentiated
Minimum Stage Grouping:	Not Reported
T (Extent of Primary Tumor):	TX
N (Lymph node metastasis):	NX
M (Distant metastasis):	MX
Storage:	Store tissue total RNA at -80°C.
Stability:	These products are stable for one year from date of shipping when stored at -80°C without repeated freeze/thaws.

Product images:

4x Image



20x Image