

Product datasheet for CR559377

Tissue Total RNA, Ovary

Product data:

Product Type:	Total RNA
Disease State:	Cancer
Diagnosis Category:	Ovarian Cancer
Tissue:	Ovary
Frozen Sample ID:	FR0002EB7C
Case ID:	CI0000011328
Prep:	1
Vial ID:	RN00003848
Tissue of Origin:	Ovary
Site of Finding:	Ovary
Appearance:	Tumor
Sample Diagnosis (from Pathology Verification):	Adenocarcinoma of ovary, papillary serous
Normal:	0%
Lesional:	0%
Tumor:	60%
Tumor Hypo/Acellular Stroma:	10%
Tumor Hypercellular Stroma:	25%
Necrosis:	5%
Pathology Verification notes from H&E review:	Tumor Stroma (Cellular): Desmoplastic reaction; Tumor Stroma (Hypo/Acellular): Fibrosis; Inflammation: Mild Lymphoplasmacytic infiltrate
Bioanalyzer Ratio (28S/18S):	1.87



[View online »](#)

CASE Diagnosis (from medical center path report): Adenocarcinoma of ovary, papillary serous

Age: 65

Gender: Female

Race: White or Caucasian

Tumor Grade: FIGO G3: Poorly differentiated

Minimum Stage Grouping: IIIC

T (Extent of Primary Tumor): T3c

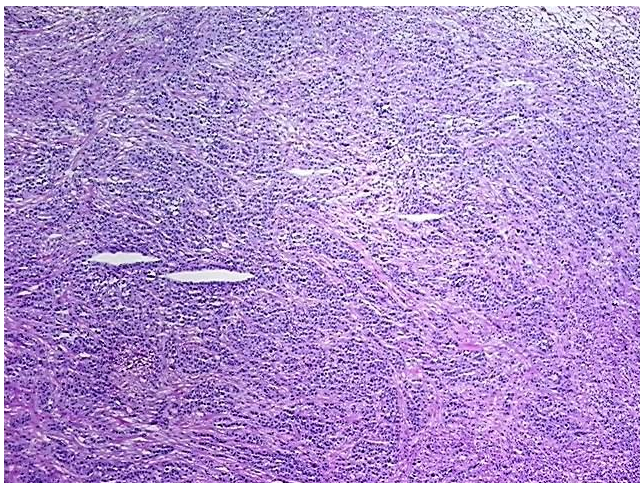
N (Lymph node metastasis): N1

M (Distant metastasis): MX

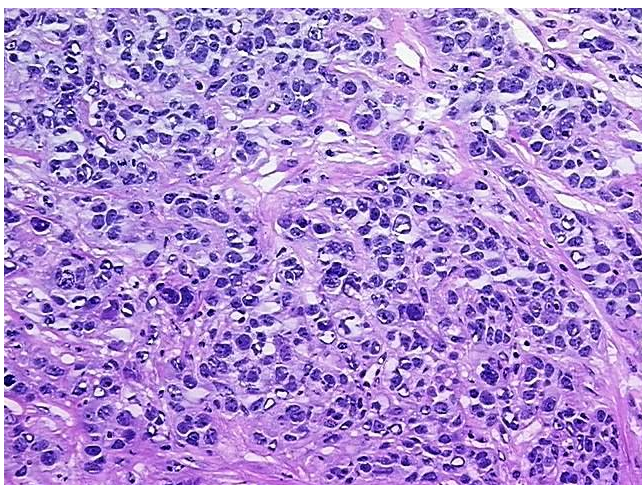
Storage: Store tissue total RNA at -80°C.

Stability: These products are stable for one year from date of shipping when stored at -80°C without repeated freeze/thaws.

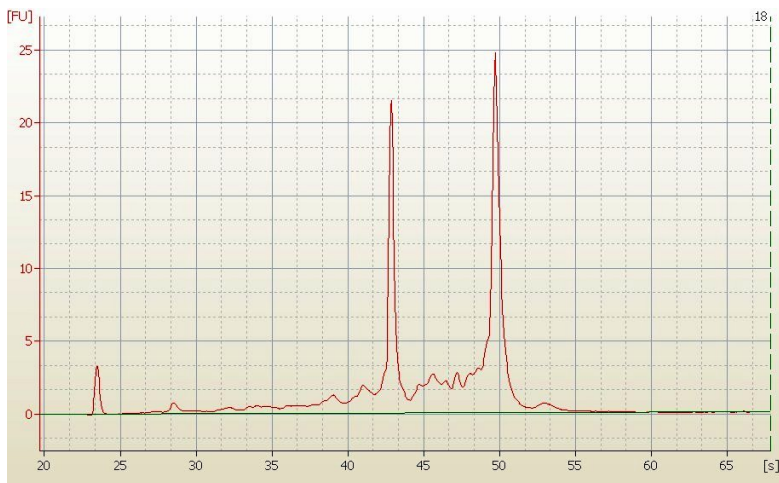
Product images:



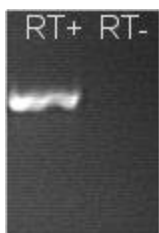
4x Image



20x Image



RNA Electropherogram Image



RNA RT-PCR Image