

## Product datasheet for CR559367

### Tissue Total RNA, Thyroid gland

#### Product data:

Product Type:	Total RNA
Disease State:	Cancer
Diagnosis Category:	Thyroid Cancer
Tissue:	Thyroid gland
Frozen Sample ID:	FR0003311E
Case ID:	CI0000010936
Prep:	2
Vial ID:	RN00002BEA
Tissue of Origin:	Thyroid gland
Site of Finding:	Thyroid gland
Appearance:	Tumor
Sample Diagnosis (from Pathology Verification):	Carcinoma of thyroid, papillary
Normal:	5%
Lesional:	0%
Tumor:	75%
Tumor Hypo/Acellular Stroma:	10%
Tumor Hypercellular Stroma:	10%
Necrosis:	0%
Pathology Verification notes from H&E review:	Tumor Stroma (Hypo/Acellular): calcification
Bioanalyzer Ratio (28S/18S):	1.09


[View online »](#)

**CASE Diagnosis (from medical center path report):** Carcinoma of thyroid, papillary

**Age:** 62

**Gender:** Female

**Race:** White or Caucasian

**Tumor Grade:** Not Reported

**Minimum Stage Grouping:** I

**T (Extent of Primary Tumor):** T1

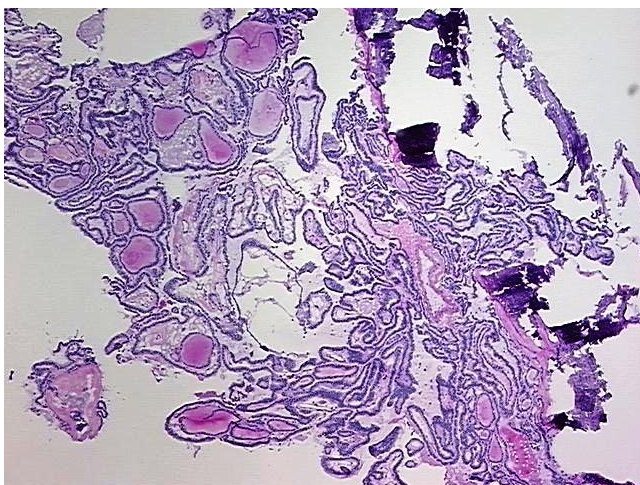
**N (Lymph node metastasis):** NX

**M (Distant metastasis):** MX

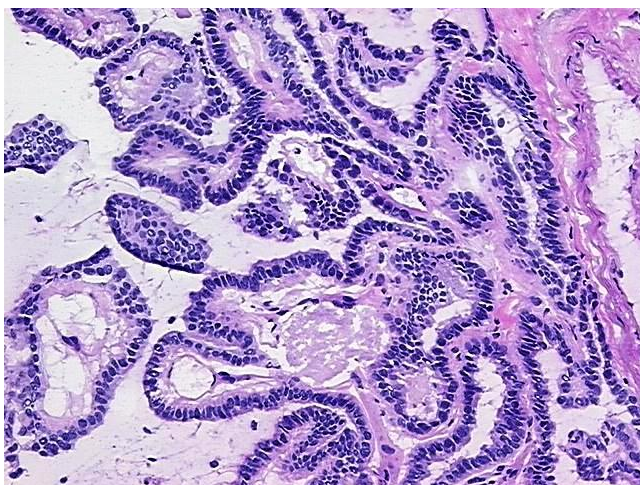
**Storage:** Store tissue total RNA at -80°C.

**Stability:** These products are stable for one year from date of shipping when stored at -80°C without repeated freeze/thaws.

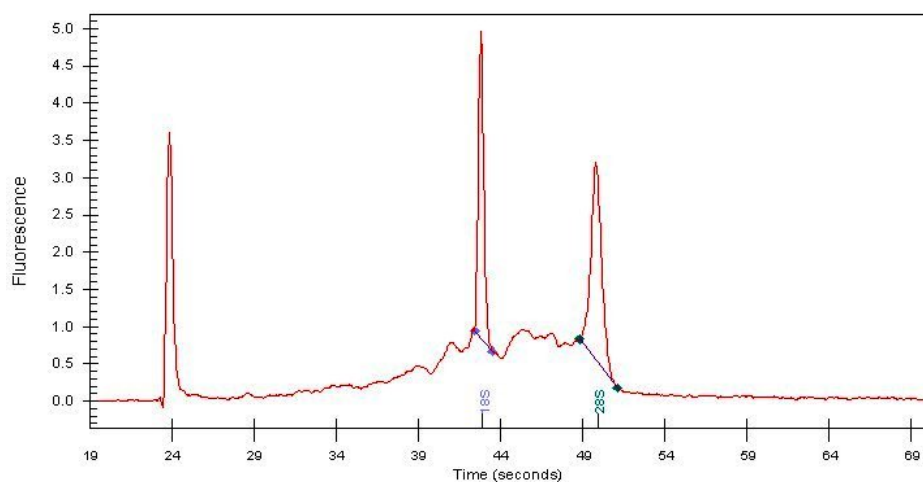
## Product images:



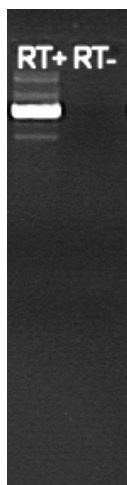
4x Image



20x Image



RNA Electropherogram Image



RNA RT-PCR Image