

## Product datasheet for CR559343

### Tissue Total RNA, Lymphoid tissue

#### Product data:

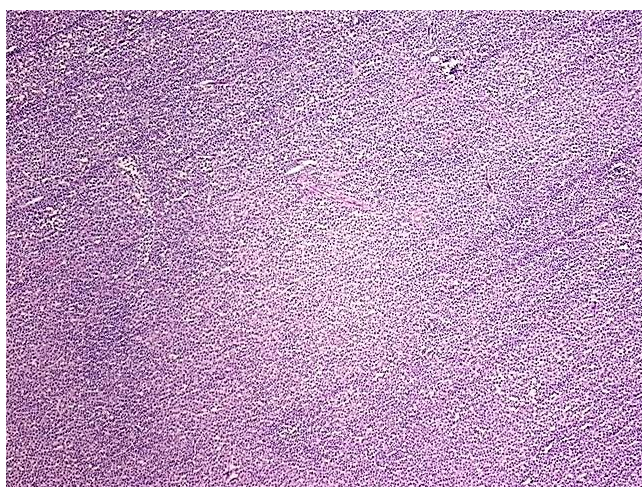
Product Type:	Total RNA
Disease State:	Cancer
Diagnosis Category:	Lymphoma
Tissue:	Lymphoid tissue
Frozen Sample ID:	FR0003EE78
Case ID:	CI7000000455
Prep:	1
Vial ID:	RN00003A87
Tissue of Origin:	Lymphoid tissue
Site of Finding:	Lymph node
Appearance:	Tumor
Sample Diagnosis (from Pathology Verification):	Lymphoma, large B-cell, diffuse
Normal:	10%
Lesional:	0%
Tumor:	85%
Tumor Hypo/Acellular Stroma:	5%
Tumor Hypercellular Stroma:	0%
Necrosis:	0%
Pathology Verification notes from H&E review:	tumor likely represents transformation from pre-existing chronic lymphocytic leukemia/lymphoma
Bioanalyzer Ratio (28S/18S):	1.93



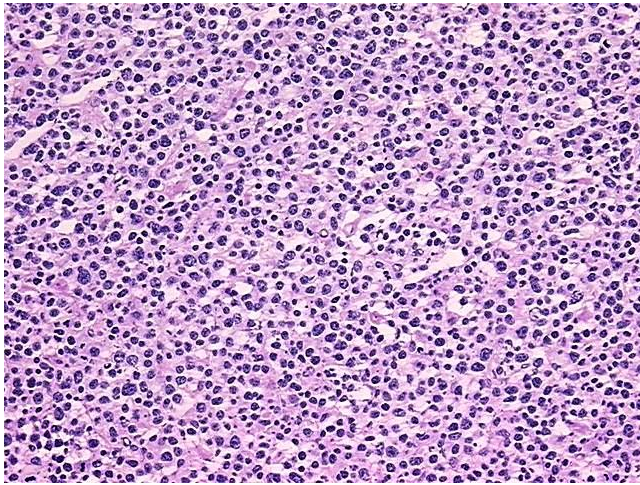
[View online »](#)

CASE Diagnosis (from medical center path report):	Lymphoma, large B-cell, diffuse
Age:	44
Gender:	Female
Race:	White or Caucasian
Tumor Grade:	See pathology report
Minimum Stage Grouping:	I
T (Extent of Primary Tumor):	Not applicable
N (Lymph node metastasis):	Not applicable
M (Distant metastasis):	Not applicable
Diagnostic Test Results:	CD52 ~ CAMPATH-1,Positive in minority of cells; CD19 ~ B4 ~ Leu12 ! by IHC,Positive; Kappa light chain ! by IHC,Positive, monoclonal; CD5 ~ Leu1 ! by IHC,Positive, focal; CD38 ~ Leu17 ~ T16 ! by IHC,Positive, weak; CD23 ~ FceRII ! by IHC,Pos
Storage:	Store tissue total RNA at -80°C.
Stability:	These products are stable for one year from date of shipping when stored at -80°C without repeated freeze/thaws.

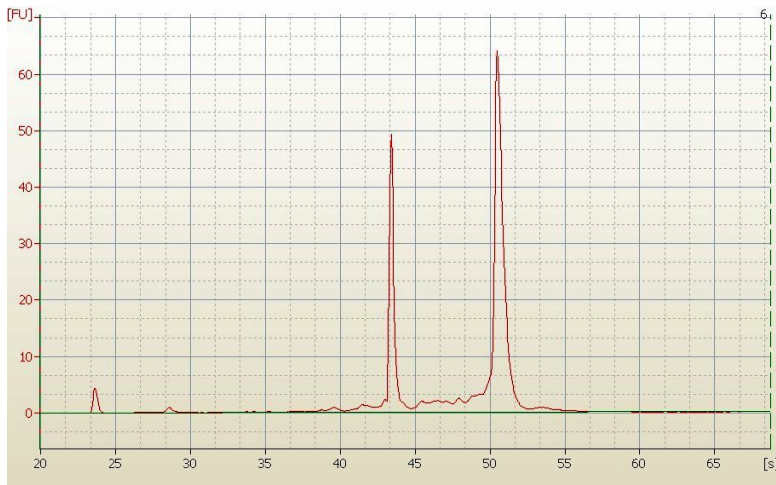
### Product images:



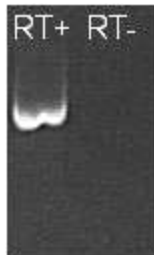
4x Image



20x Image



RNA Electropherogram Image



RNA RT-PCR Image