

Product datasheet for CR559337

Tissue Total RNA, Soft tissue

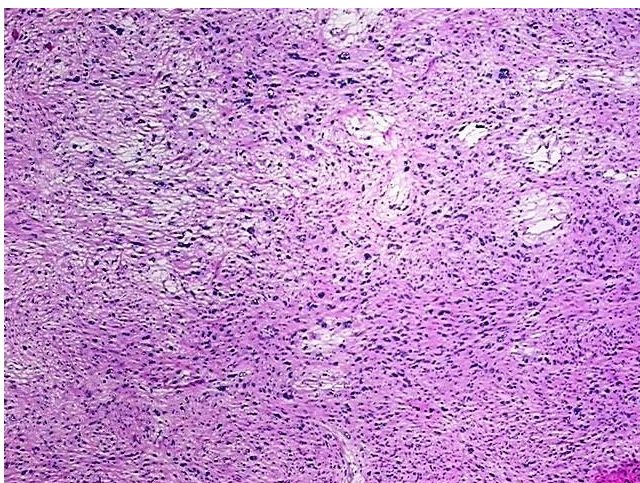
Product data:

Product Type:	Total RNA
Disease State:	Cancer
Diagnosis Category:	Sarcoma
Tissue:	Soft tissue
Frozen Sample ID:	FR00031E59
Case ID:	CI0000012311
Prep:	1
Vial ID:	RN00003242
Tissue of Origin:	Soft tissue
Site of Finding:	Thigh
Appearance:	Tumor
Sample Diagnosis (from Pathology Verification):	Sarcoma, pleomorphic
Normal:	0%
Lesional:	0%
Tumor:	90%
Tumor Hypo/Acellular Stroma:	5%
Tumor Hypercellular Stroma:	5%
Necrosis:	0%
Bioanalyzer Ratio (28S/18S):	0.86
CASE Diagnosis (from medical center path report):	Sarcoma, pleomorphic
Age:	54

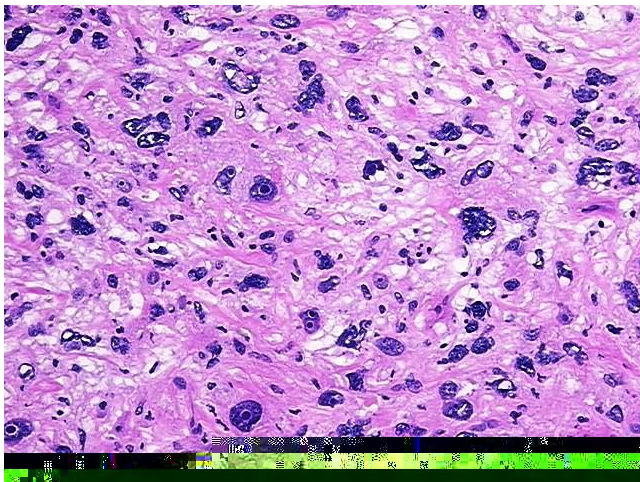


[View online »](#)

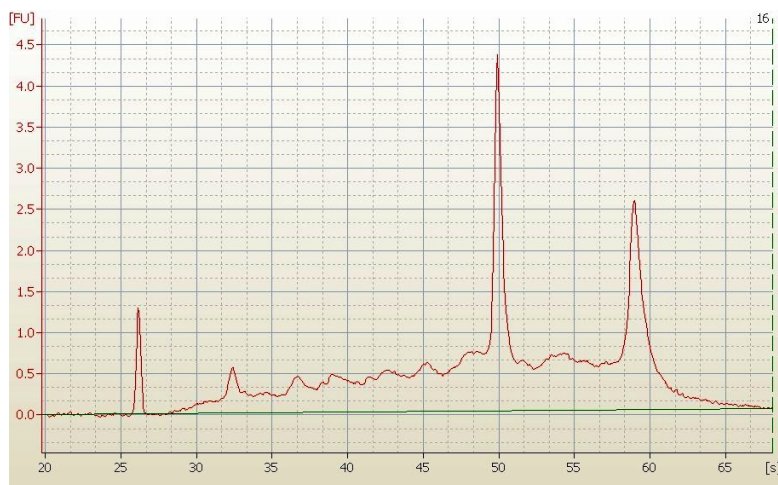
Gender:	Male
Race:	Asian
Tumor Grade:	AJCC G3: Poorly differentiated
Minimum Stage Grouping:	III
T (Extent of Primary Tumor):	T2b
N (Lymph node metastasis):	NX
M (Distant metastasis):	MX
Storage:	Store tissue total RNA at -80°C.
Stability:	These products are stable for one year from date of shipping when stored at -80°C without repeated freeze/thaws.

Product images:

4x Image



20x Image



RNA Electropherogram Image