

Product datasheet for **CR559323**

Tissue Total RNA, Endometriotic tissue

Product data:

Product Type:	Total RNA
Disease State:	Cancer
Diagnosis Category:	Sarcoma
Tissue:	Endometrium
Frozen Sample ID:	FR65EE04BD
Case ID:	CI0000006668
Prep:	2
Vial ID:	RN00003C68
Tissue of Origin:	Endometriotic tissue
Site of Finding:	Soft tissue
Appearance:	Tumor
Sample Diagnosis (from Pathology Verification):	Endometrial stromal sarcoma
Normal:	0%
Lesional:	0%
Tumor:	50%
Tumor Hypo/Acellular Stroma:	0%
Tumor Hypercellular Stroma:	50%
Necrosis:	0%
Pathology Verification notes from H&E review:	Tumor Stroma (Hypo/Acellular): Fibrosis
Bioanalyzer Ratio (28S/18S):	2.02



[View online »](#)

CASE Diagnosis (from medical center path report): Sarcoma, stromal

Age: 55

Gender: Female

Race: White or Caucasian

Tumor Grade: FIGO G1: Well differentiated

Minimum Stage Grouping: IVB

T (Extent of Primary Tumor): TX

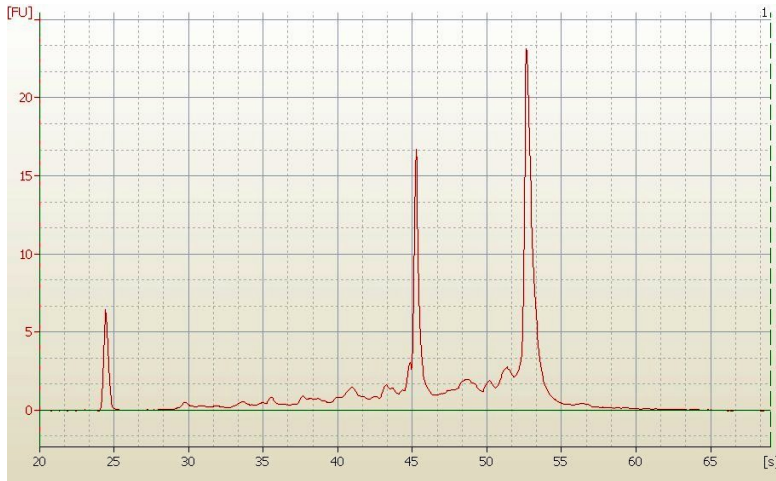
N (Lymph node metastasis): NX

M (Distant metastasis): M1

Storage: Store tissue total RNA at -80°C.

Stability: These products are stable for one year from date of shipping when stored at -80°C without repeated freeze/thaws.

Product images:



RNA Electropherogram Image



RNA RT-PCR Image