

Product datasheet for CR559307

Tissue Total RNA, Soft tissue

Product data:

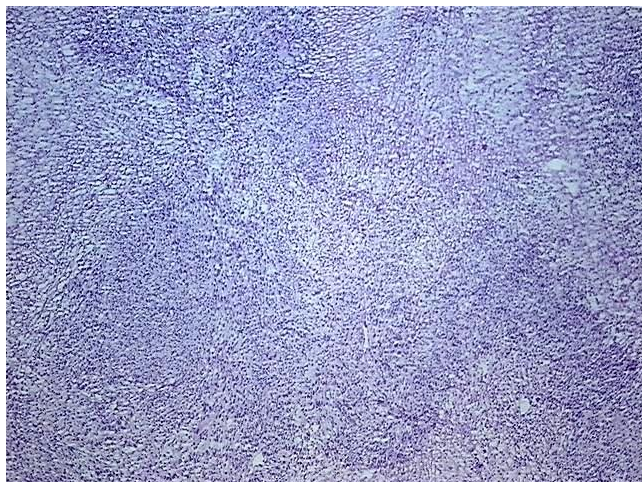
Product Type:	Total RNA
Disease State:	Cancer
Diagnosis Category:	Sarcoma
Tissue:	Soft tissue
Frozen Sample ID:	FR0001F393
Case ID:	CU0000005938
Prep:	1
Vial ID:	RN0000325F
Tissue of Origin:	Soft tissue
Site of Finding:	Pelvis
Appearance:	Tumor
Sample Diagnosis (from Pathology Verification):	Sarcoma, spindle cell
Normal:	0%
Lesional:	0%
Tumor:	60%
Tumor Hypo/Acellular Stroma:	0%
Tumor Hypercellular Stroma:	40%
Necrosis:	0%
Pathology Verification notes from H&E review:	High-grade spindle cell sarcoma
Bioanalyzer Ratio (28S/18S):	1.11



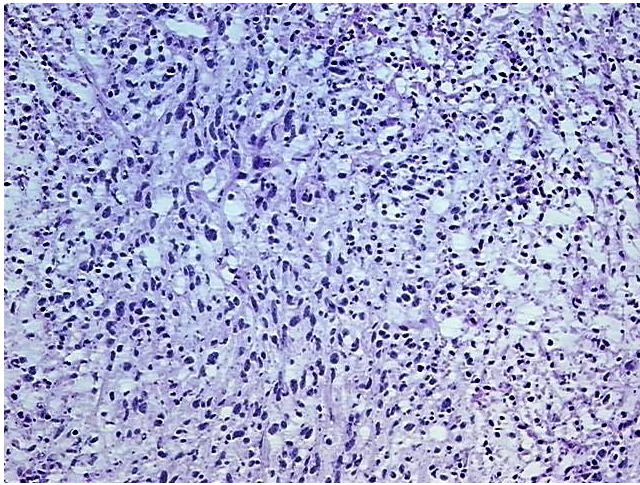
[View online »](#)

CASE Diagnosis (from medical center path report):	Sarcoma, spindle cell
Age:	35
Gender:	Female
Tumor Grade:	See pathology report
Minimum Stage Grouping:	III
T (Extent of Primary Tumor):	T2
N (Lymph node metastasis):	NX
M (Distant metastasis):	MX
Diagnostic Test Results:	CD227 ~ MUC1 ~ EMA ~ CA15-3 ! by IHC,Negative; Smooth muscle actin ~ SMA ~ Alpha-SMA ! by IHC,Positive, focal; S100 protein,Negative; Desmin ! by IHC,Negative; CD10 ~ CALLA ~ Common ALL antigen ! by IHC,Negative; Cytokeratin AE1/AE3 ~ AE1/
Storage:	Store tissue total RNA at -80°C.
Stability:	These products are stable for one year from date of shipping when stored at -80°C without repeated freeze/thaws.

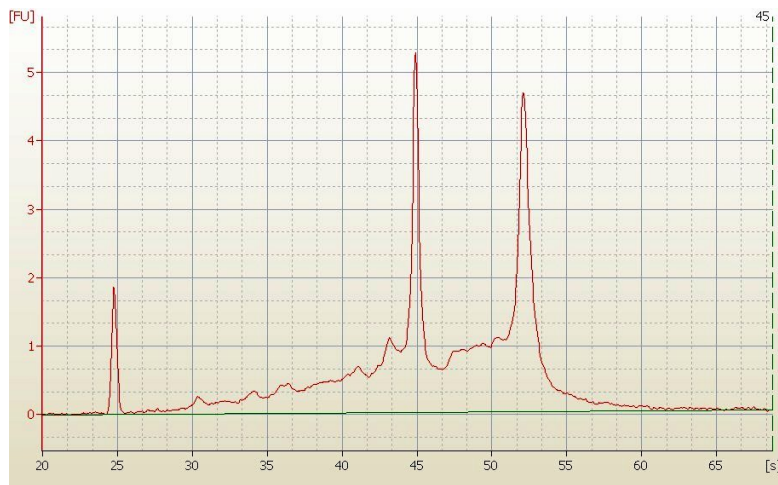
Product images:



4x Image



20x Image



RNA Electropherogram Image