

## Product datasheet for CR559300

### Tissue Total RNA, Soft tissue

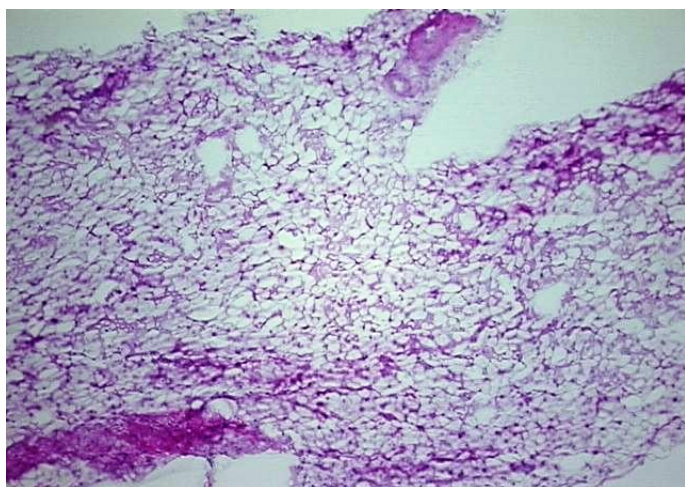
#### Product data:

Product Type:	Total RNA
Disease State:	Cancer
Diagnosis Category:	Sarcoma
Tissue:	Soft tissue
Frozen Sample ID:	FR00020D87
Case ID:	CU0000005900
Prep:	2
Vial ID:	RN00003C3B
Tissue of Origin:	Soft tissue
Site of Finding:	Thigh
Appearance:	Tumor
Sample Diagnosis (from Pathology Verification):	Liposarcoma
Normal:	0%
Lesional:	0%
Tumor:	90%
Tumor Hypo/Acellular Stroma:	10%
Tumor Hypercellular Stroma:	0%
Necrosis:	0%
Bioanalyzer Ratio (28S/18S):	1.22
CASE Diagnosis (from medical center path report):	Liposarcoma
Age:	20

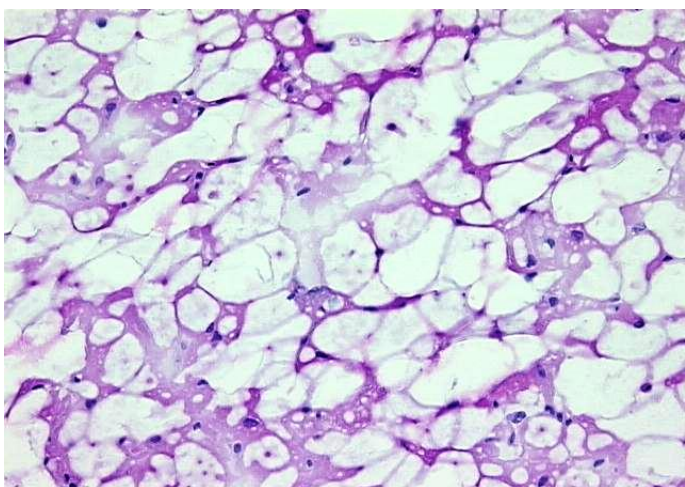


[View online »](#)

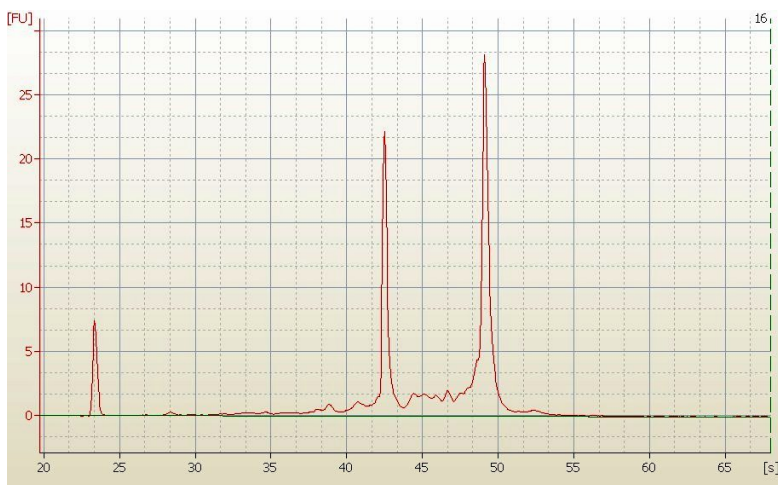
Gender:	Female
Tumor Grade:	AJCC G1: Well differentiated
Minimum Stage Grouping:	I
T (Extent of Primary Tumor):	T2a
N (Lymph node metastasis):	NX
M (Distant metastasis):	MX
Storage:	Store tissue total RNA at -80°C.
Stability:	These products are stable for one year from date of shipping when stored at -80°C without repeated freeze/thaws.

**Product images:**

4x Image



20x Image



RNA Electropherogram Image



RNA RT-PCR Image