

Product datasheet for CR559284

Tissue Total RNA, Soft tissue

Product data:

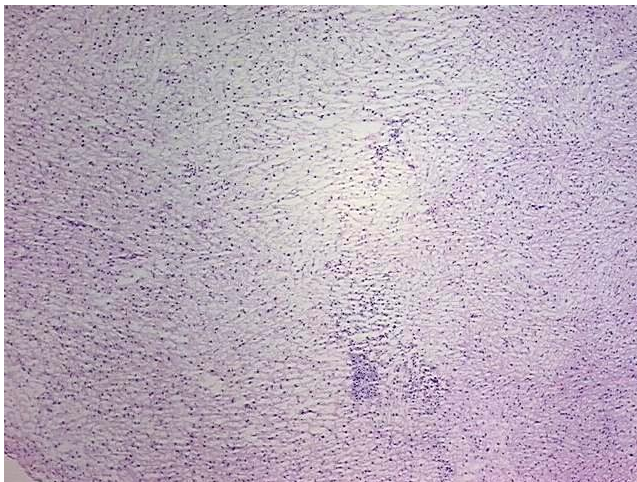
| | |
|---|---|
| Product Type: | Total RNA |
| Disease State: | Cancer |
| Diagnosis Category: | Sarcoma |
| Tissue: | Soft tissue |
| Frozen Sample ID: | FR65EDFF32 |
| Case ID: | CI0000006918 |
| Prep: | 1 |
| Vial ID: | RN00003B8A |
| Tissue of Origin: | Soft tissue |
| Site of Finding: | Retroperitoneal region |
| Appearance: | Tumor |
| Sample Diagnosis (from Pathology Verification): | Histiocytoma, malignant fibrous |
| Normal: | 0% |
| Lesional: | 0% |
| Tumor: | 90% |
| Tumor Hypo/Acellular Stroma: | 10% |
| Tumor Hypercellular Stroma: | 0% |
| Necrosis: | 0% |
| Pathology Verification notes from H&E review: | Tumor Stroma (Cellular): Inflammatory cells |
| Bioanalyzer Ratio (28S/18S): | 1.3 |



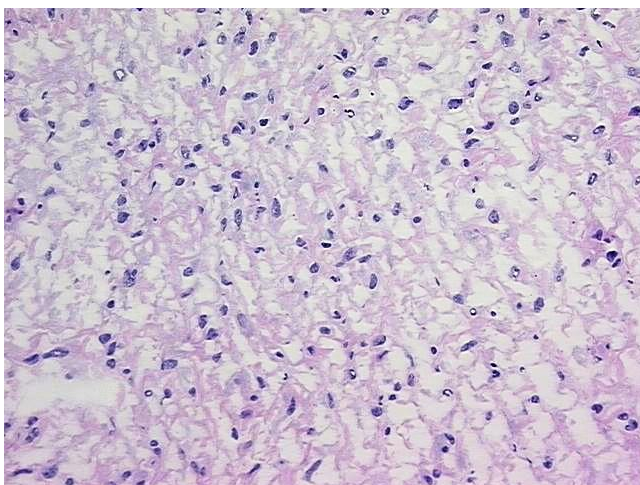
[View online »](#)

| | |
|--|---|
| CASE Diagnosis (from medical center path report): | Histiocytoma, malignant fibrous |
| Age: | 76 |
| Gender: | Female |
| Race: | White or Caucasian |
| Tumor Grade: | AJCC G2: Moderately differentiated |
| Minimum Stage Grouping: | III |
| T (Extent of Primary Tumor): | T2b |
| N (Lymph node metastasis): | N0 |
| M (Distant metastasis): | MX |
| Diagnostic Test Results: | Cytokeratin (Pan) ~ Keratin, Pan ! by IHC,Negative; Vimentin ~ VIM ! by IHC,Positive; S100 protein,Negative; Desmin ! by IHC,Negative; MSA ~ Muscle Specific Actin,Negative |
| Storage: | Store tissue total RNA at -80°C. |
| Stability: | These products are stable for one year from date of shipping when stored at -80°C without repeated freeze/thaws. |

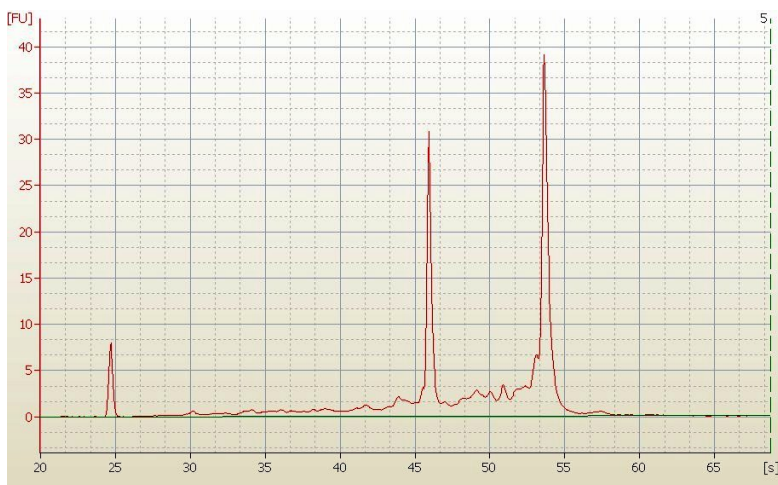
Product images:



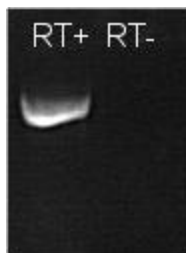
4x Image



20x Image



RNA Electropherogram Image



RNA RT-PCR Image