

Product datasheet for CR559269

Tissue Total RNA, Thyroid gland

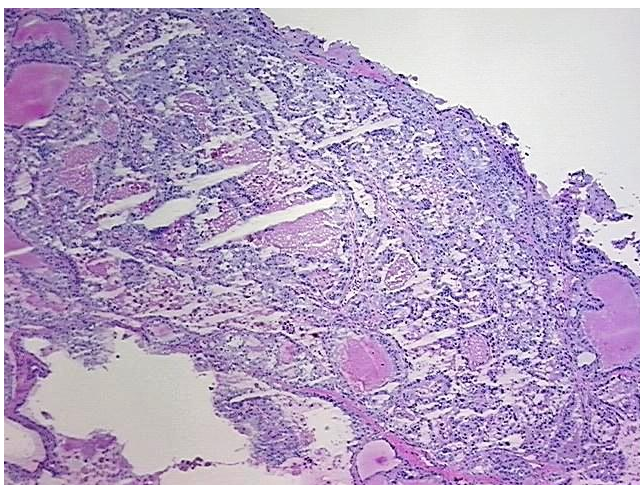
Product data:

Product Type:	Total RNA
Disease State:	Cancer
Diagnosis Category:	Thyroid Cancer
Tissue:	Thyroid gland
Frozen Sample ID:	FR0001E271
Case ID:	CI0000006798
Prep:	2
Vial ID:	RN00002BE2
Tissue of Origin:	Thyroid gland
Site of Finding:	Thyroid gland
Appearance:	Tumor
Sample Diagnosis (from Pathology Verification):	Carcinoma of thyroid, papillary
Normal:	20%
Lesional:	0%
Tumor:	55%
Tumor Hypo/Acellular Stroma:	10%
Tumor Hypercellular Stroma:	0%
Necrosis:	15%
Bioanalyzer Ratio (28S/18S):	1.45
CASE Diagnosis (from medical center path report):	Carcinoma of thyroid, papillary
Age:	47

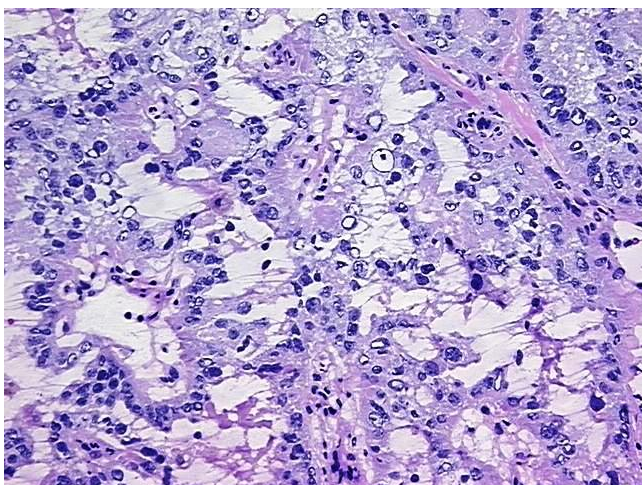


[View online »](#)

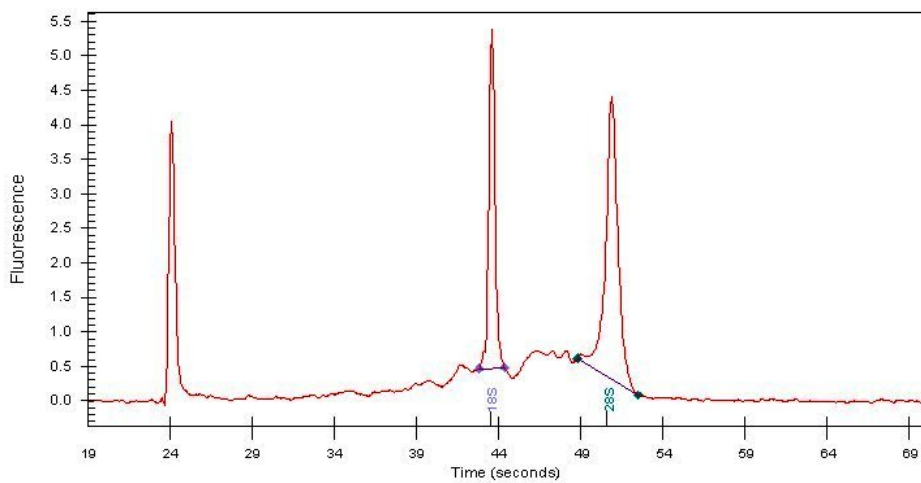
Gender:	Female
Race:	White or Caucasian
Tumor Grade:	Not Reported
Minimum Stage Grouping:	II
T (Extent of Primary Tumor):	T2
N (Lymph node metastasis):	NX
M (Distant metastasis):	MX
Storage:	Store tissue total RNA at -80°C.
Stability:	These products are stable for one year from date of shipping when stored at -80°C without repeated freeze/thaws.

Product images:

4x Image



20x Image



RNA Electropherogram Image



RNA RT-PCR Image