

Product datasheet for CR559255

Tissue Total RNA, Ovary

Product data:

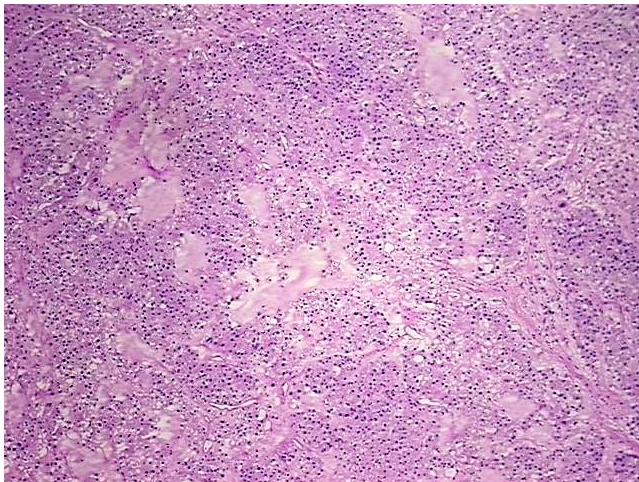
Product Type:	Total RNA
Disease State:	Cancer
Diagnosis Category:	Ovarian Cancer
Tissue:	Ovary
Frozen Sample ID:	FR0001DFD5
Case ID:	CU0000006458
Prep:	2
Vial ID:	RN00003861
Tissue of Origin:	Ovary
Site of Finding:	Ovary
Appearance:	Tumor
Sample Diagnosis (from Pathology Verification):	Adenocarcinoma of ovary, clear cell
Normal:	0%
Lesional:	0%
Tumor:	70%
Tumor Hypo/Acellular Stroma:	20%
Tumor Hypercellular Stroma:	0%
Necrosis:	10%
Pathology Verification notes from H&E review:	tumor: oxyphilic type
Bioanalyzer Ratio (28S/18S):	1.4



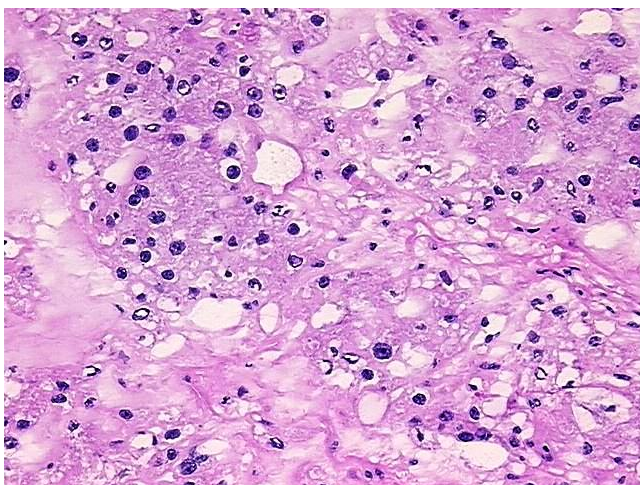
[View online »](#)

CASE Diagnosis (from medical center path report):	Adenocarcinoma of ovary, clear cell
Age:	59
Gender:	Female
Tumor Grade:	Not Reported
Minimum Stage Grouping:	IB
T (Extent of Primary Tumor):	T1b
N (Lymph node metastasis):	N0
M (Distant metastasis):	MX
Diagnostic Test Results:	Inhibin,Negative; Cytokeratin 7 ~ CK7 ! by IHC,Positive, focal; Cytokeratin 20 ~ CK20 ! by IHC,Negative; Cytokeratin CAM5.2 ~ CAM5.2 ! by IHC,Positive; Alpha-1-fetoprotein ~ AFP ! by IHC,Negative; Cytokeratin AE1/AE3 ~ AE1/AE3 ! by IHC,Positive
Storage:	Store tissue total RNA at -80°C.
Stability:	These products are stable for one year from date of shipping when stored at -80°C without repeated freeze/thaws.

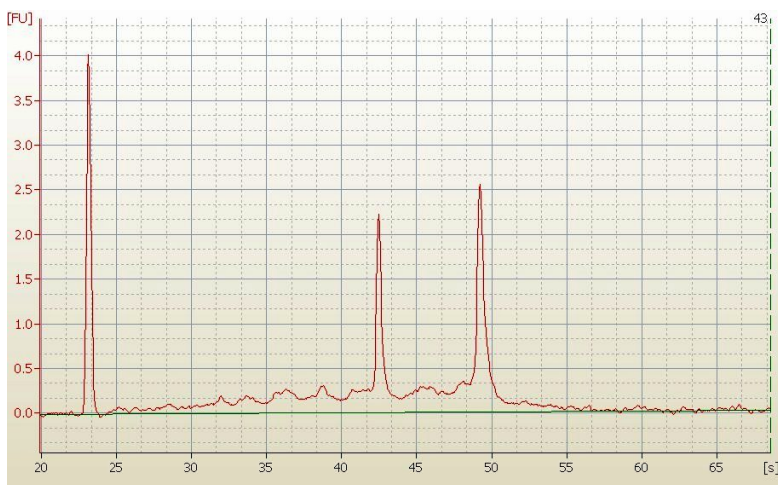
Product images:



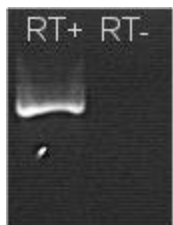
4x Image



20x Image



RNA Electropherogram Image



RNA RT-PCR Image